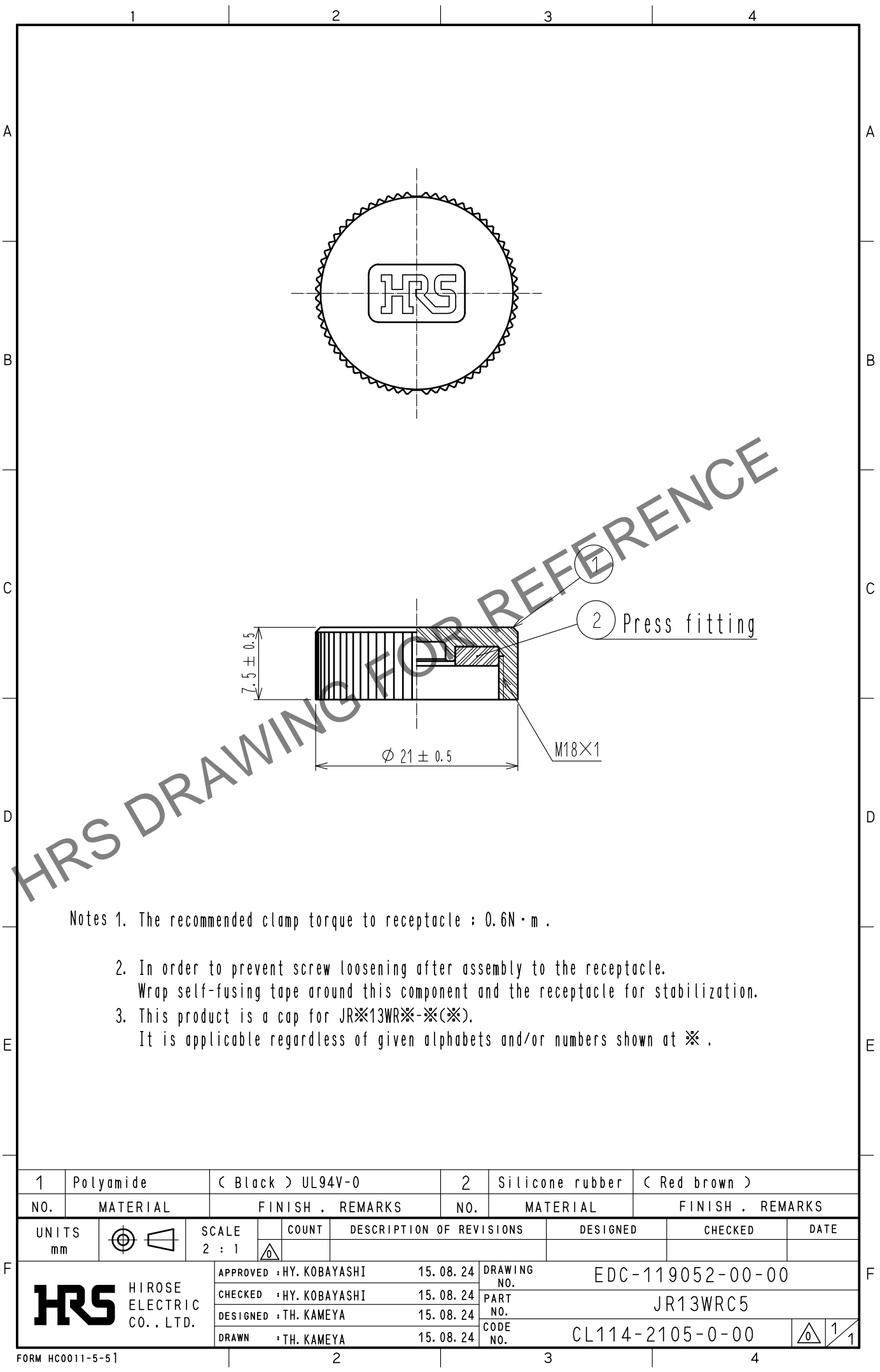


May.1.2024 Copyright 2024 HIROSE ELECTRIC CO., LTD. All Rights Reserved.
In case of consideration for using Automotive equipment / device which demand high reliability, kindly contact our sales window correspondents.



- Notes 1. The recommended clamp torque to receptacle : 0.6N・m .
2. In order to prevent screw loosening after assembly to the receptacle.
Wrap self-fusing tape around this component and the receptacle for stabilization.
3. This product is a cap for JR※13WR※-※(※).
It is applicable regardless of given alphabets and/or numbers shown at ※ .

1	Polyamide	(Black) UL94V-0		2	Silicone rubber	(Red brown)	
NO.	MATERIAL	FINISH . REMARKS			NO.	MATERIAL	FINISH . REMARKS
UNITS mm		SCALE	COUNT	DESCRIPTION OF REVISIONS	DESIGNED	CHECKED	DATE
		2 : 1					
HIROSE ELECTRIC CO., LTD.		APPROVED :HY. KOBAYASHI		15.08.24	DRAWING NO. EDC-119052-00-00		
		CHECKED :HY. KOBAYASHI		15.08.24	PART NO. JR13WRC5		
		DESIGNED :TH. KAMEYA		15.08.24	CODE NO. CL114-2105-0-00		
		DRAWN :TH. KAMEYA		15.08.24	1		
						1	