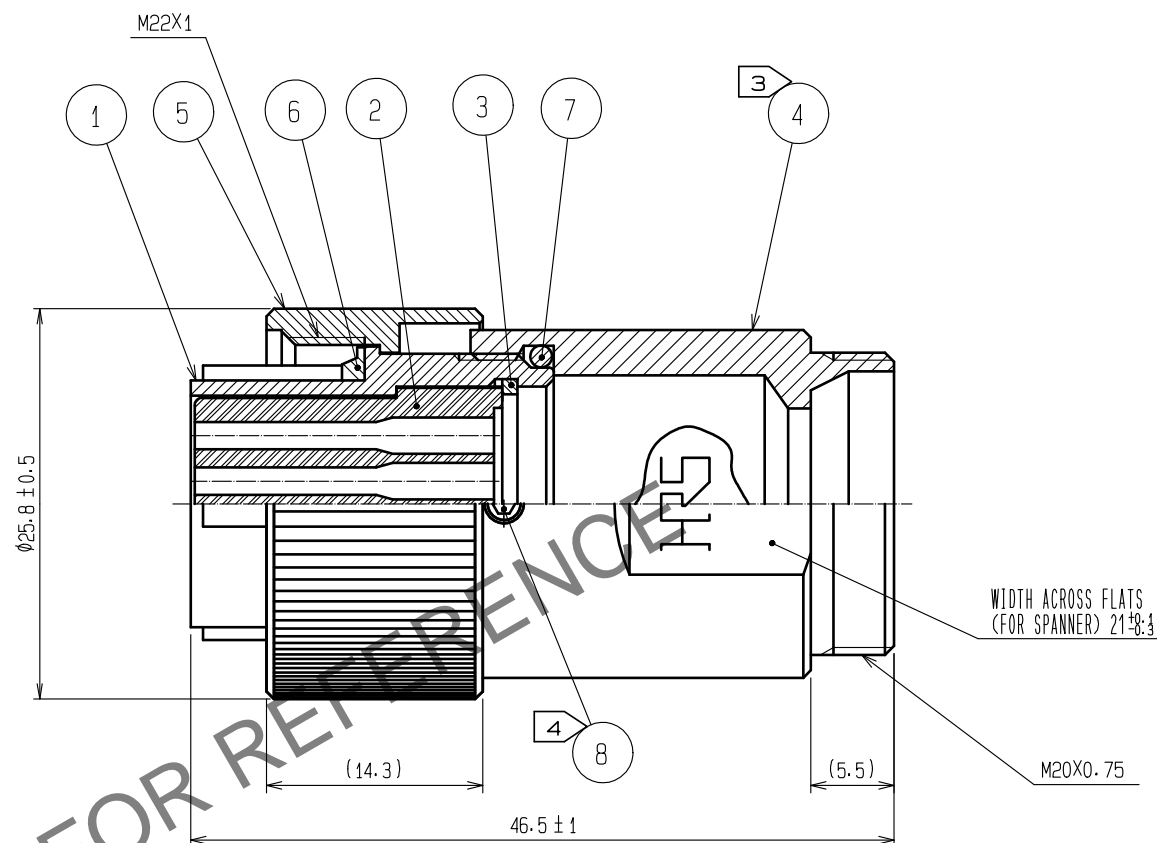
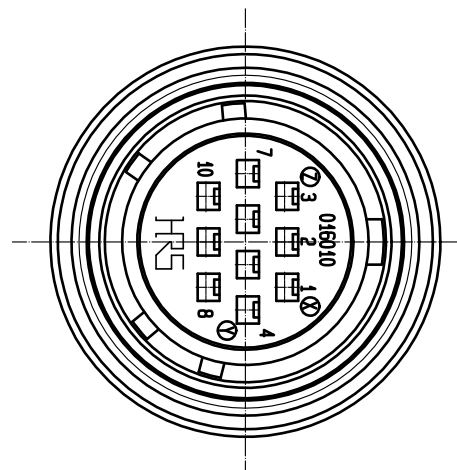
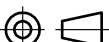


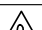


May.1.2024 Copyright 2024 HIROSE ELECTRIC CO., LTD. All Rights Reserved.  
In case of consideration for using Automotive equipment / device which demand high reliability, kindly contact our sales window correspondents.



- NOTES 1 APPLICABLE CRIMP CONTACT: JRC-SC2-212(AWG#20 TO 24)  
JRC-SC2-222(AWG#24 TO 28)
- 2 APPLICABLE CONTACT REMOVAL TOOL(EXTRACTION TOOL): RM-TP
- 3 THE RECOMMENDED CLAMP TORQUE, REF. NO. ④: 3 TO 3.5N · m.
- 4 THE RECOMMENDED CLAMP TORQUE, REF. NO. ⑧: 0.2 TO 0.25N · m.  
AND LOCTITE 263, HENKEL JAPAN OR EQUIVALENT IS RECOMMENDED TO  
PREVENT FROM LOOSENING.
- 5 ONE EXAMPLE OF THE ROTATION OF REF. NO. ④ TO REF. NO. ① IS SHOWN.
- 6 THIS PRODUCT TO BE USED WITH CABLECLAMP, JR16WCC-※.  
※ DESIGNATE DIAMETER OF APPLICABLE CABLE.
- 7 THE CABLE PULL AND TWISTING STRENGTH AND OTHER CHARACTERISTICS MAY DIFFER,  
DEPENDING ON THE CABLE STRUCTURE.  
PLEASE CONFIRM BEFORE THE USE.

4	BRASS	BLACK CHROME PLATING		8	STAINLESS STEEL	
3	PHOSPHOR BRONZE	NICKEL PLATING		7	ACRYLONITRILE BUTADIENE RUBBER (BLACK)	
2	POLYCARBONATE	(BLACK) UL94V-0		6	ACRYLONITRILE BUTADIENE RUBBER (BLACK)	
1	ALUMINUM ALLOY	BLACK CHROME PLATING		5	BRASS BLACK CHROME PLATING	
NO.	MATERIAL	FINISH . REMARKS		NO.	MATERIAL	FINISH . REMARKS

UNITS mm			SCALE 2 : 1		COUNT	DESCRIPTION OF REVISIONS	DESIGNED	CHECKED	DATE
 HIROSE ELECTRIC CO., LTD.		APPROVED		HY. KOBAYASHI		18.02.26	DRAWING NO. EDC-110655-31-00		
		CHECKED		HY. KOBAYASHI		18.02.26	PART NO. JR16WP-10SC(31)		
		DESIGNED		TH. KAMEYA		18.02.24	CODE NO. CL114-2122-0-31		
		DRAWN		MK. INOUE		18.02.14	 1		