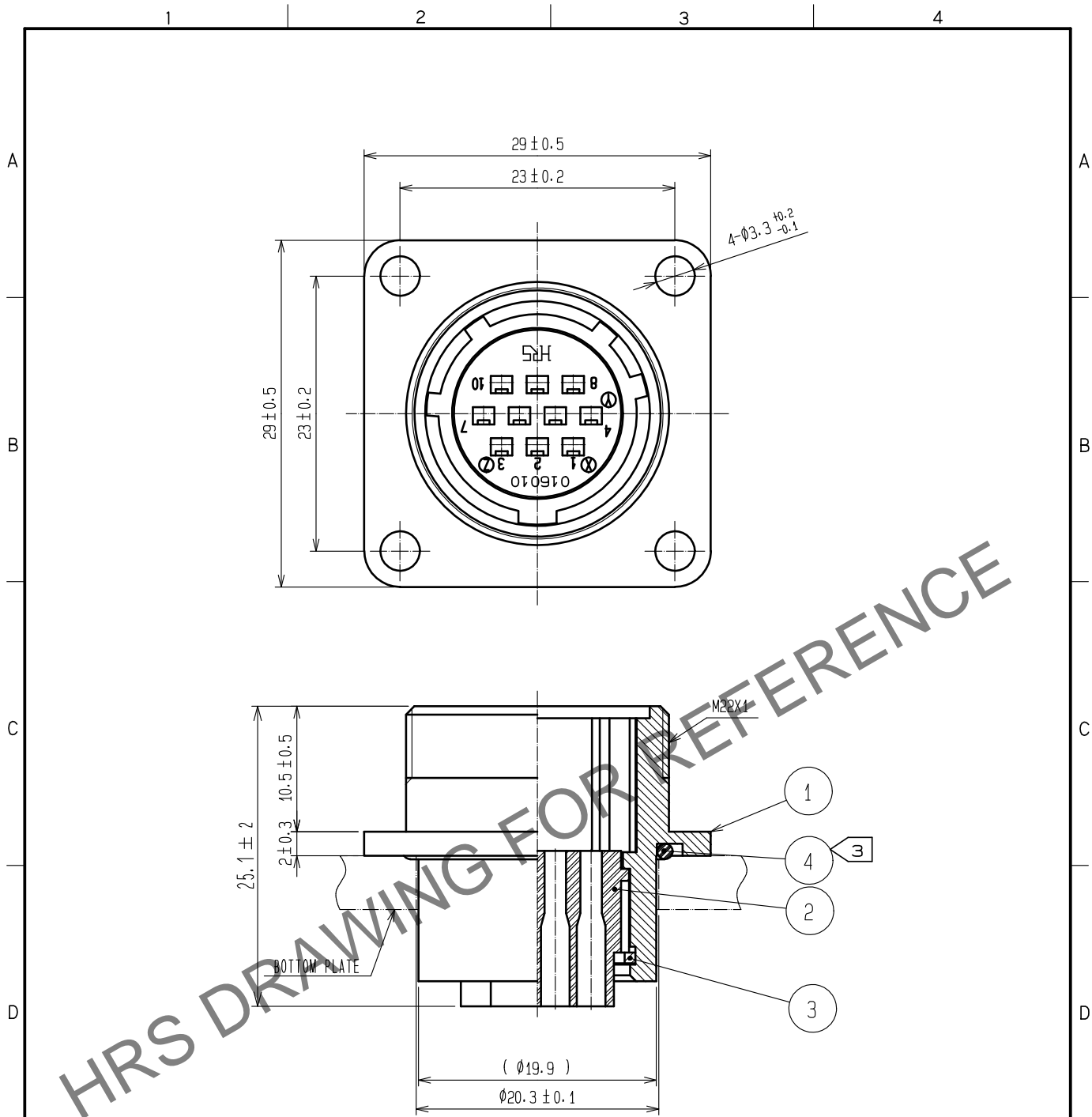


May.1.2024 Copyright 2024 HIROSE ELECTRIC CO., LTD. All Rights Reserved.
In case of consideration for using Automotive equipment / device which demand high reliability, kindly contact our sales window correspondents.



- NOTES 1. APPLICABLE CRIMP CONTACT:JRC-PC2-212(AWG#20 TO 24)
JRC-PC2-222(AWG#24 TO 28)
2. APPLICABLE CONTACT REMOVAL TOOL(EXTRACTION TOOL):RM-TP
③ WHEN MOUNTED ON CHASSIS, BE CAREFUL THAT REFERENCE NO. ④
IS FITTED INTO THE INDICATED GROOVE WITHOUT ANY BITING.

2	POLYCARBONATE	(BLACK) UL94V-0		4	ACRYLONITRILE BUTADIENE RUBBER	(BLACK)		
1	ALUMINUM ALLOY	BLACK CHROME PLATING		3	PHOSPHOR BRONZE	NICKEL PLATING		
NO.	MATERIAL	FINISH , REMARKS		NO.	MATERIAL	FINISH , REMARKS		
UNITS mm		SCALE 2 : 1		COUNT	DESCRIPTION OF REVISIONS	DESIGNED	CHECKED	DATE
HIROSE ELECTRIC CO., LTD.								
		APPROVED :HY. KOBAYASHI		18. 02. 26	DRAWING NO.	EDC-110660-31-00		
		CHECKED :HY. KOBAYASHI		18. 02. 26	PART NO.	JR16WR-10PC(31)		
		DESIGNED :TH. KAMEYA		18. 02. 24	CODE NO.	CL114-2130-8-31		
		DRAWN :MK. INOUE		18. 02. 14				