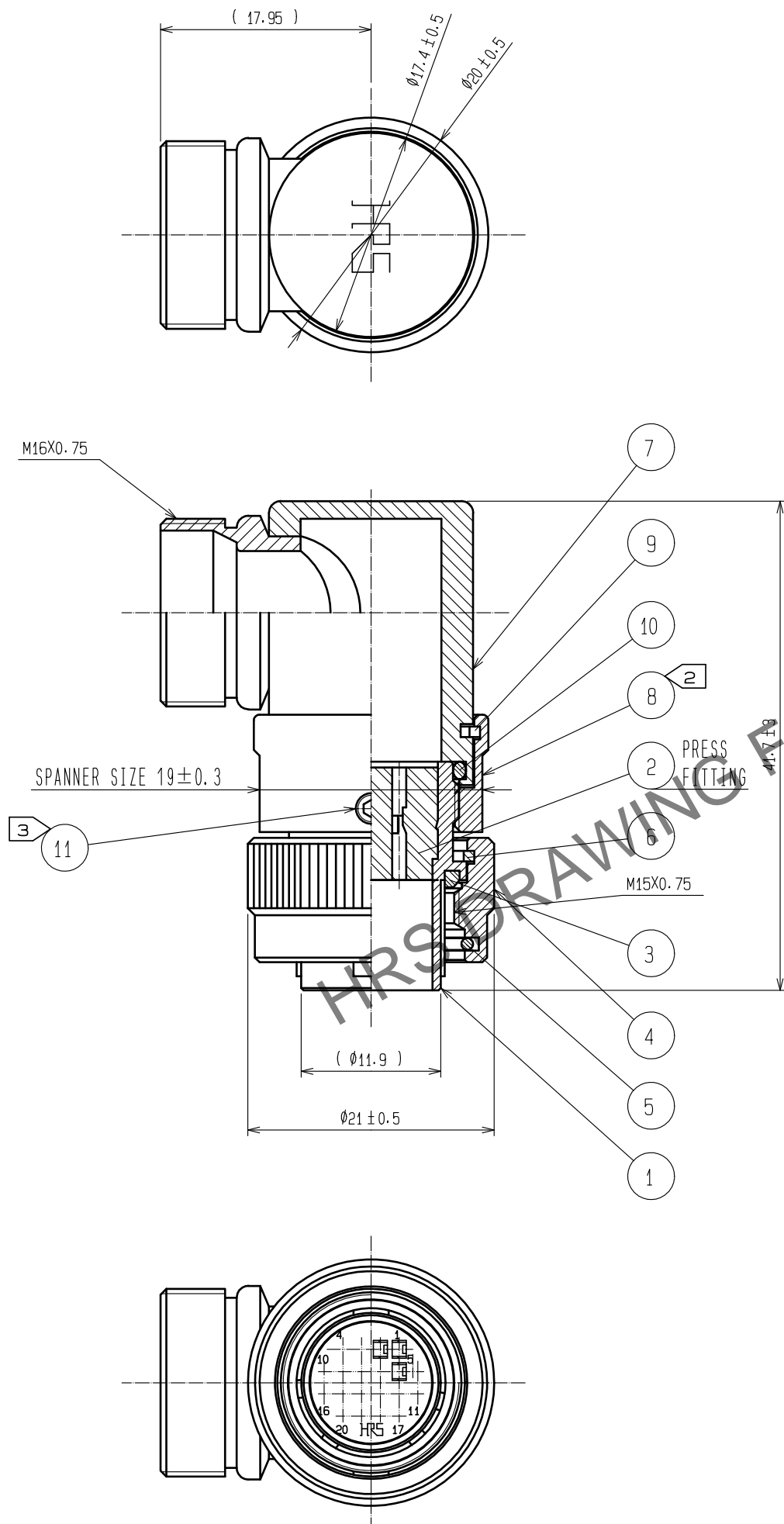
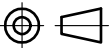


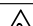


Mar.1.2024 Copyright 2024 HIROSE ELECTRIC CO., LTD. All Rights Reserved.
In case of consideration for using Automotive equipment / device which demand high reliability, kindly contact our sales window correspondents.



- NOTES
- ONE EXAMPLE OF THE ROTATION OF REF.NO.7,8 AND REF.NO.1 IS SHOWN.
 - THE RECOMMENDED CLAMP TORQUE REF.NO.8 : 3 TO 4 N · m.
LOCTITE 243, HENKEL JAPAN OR EQUIVALENT IS RECOMMENDED TO PREVENT REF.NO.8 FROM LOOSENING.
 - THE RECOMMENDED CLAMP TORQUE REF.NO.11 : 0.2 TO 0.3 N · m.
LOCTITE 243, HENKEL JAPAN OR EQUIVALENT IS RECOMMENDED TO PREVENT REF.NO.11 FROM LOOSENING.
 - THIS PRODUCT TO BE USED WITH CABLECLAMP, JR13WCC-*(72). THE RECOMMENDED CLAMP TORQUE : 3 TO 4 N · m. AND LOCTITE 243, HENKEL JAPAN OR EQUIVALENT IS RECOMMENDED TO PREVENT FROM LOOSENING. * DESIGNATE DIAMETER OF APPLICABLE CABLE.
 - THE CABLE PULL AND TWISTING STRENGTH AND OTHER CHARACTERISTICS MAY DIFFER, DEPENDING ON THE CABLE STRUCTURE. PLEASE CONFIRM BEFORE THE USE.

6	PHOSPHOR BRONZE	NICKEL PLATING											
5	STEEL	NICKEL PLATING	11	STAINLESS STEEL	JISB1177 HEAGON SOCKET SET SCREW M2.6X0.45								
4	BRASS	NICKEL PLATING	10	ACRYLONITRILE BUTADIENE RUBBER	(BLACK)								
3	ACRYLONITRILE BUTADIENE RUBBER	(BLACK)	9	PHOSPHOR BRONZE	NICKEL PLATING								
2	POLYBUTYLENE TEREPHTHALATE	(BLACK) UL94V-0	8	BRASS	NICKEL PLATING								
1	ZINC ALLOY	NICKEL PLATING	7	BRASS	NICKEL PLATING								
NO.	MATERIAL	FINISH . REMARKS		NO.	MATERIAL	FINISH . REMARKS							
UNITS mm			SCALE 2 : 1		COUNT	DESCRIPTION OF REVISIONS		DESIGNED		CHECKED		DATE	
 HIROSE ELECTRIC CO., LTD.				APPROVED :HY. KOBAYASHI		18. 02. 22		DRAWING NO.		EDC-116688-31-00			
				CHECKED :HY. KOBAYASHI		18. 02. 22		PART NO.		HR22-12WTLP-20PC(31)			
				DESIGNED :HY. KISHI		18. 02. 21		CODE NO.		CL122-0064-9-31			
				DRAWN :MK. INOUE		18. 02. 06				 1			