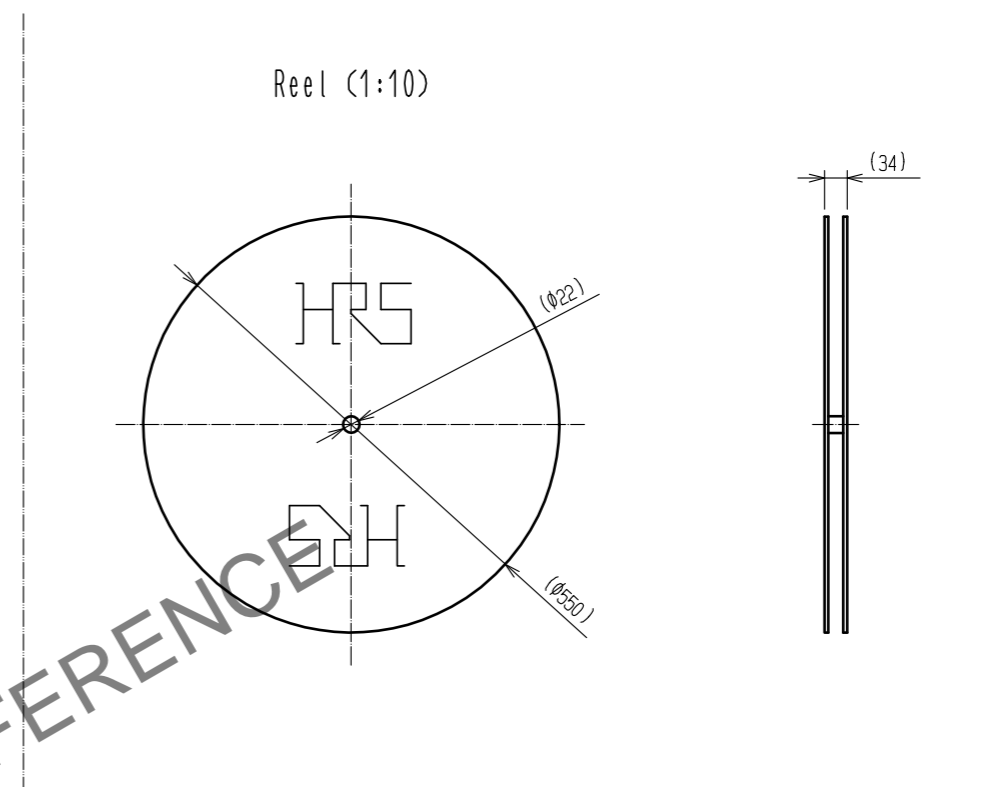
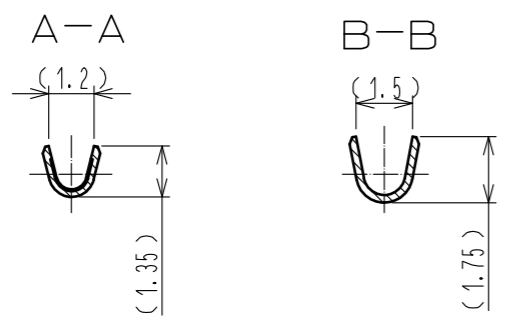
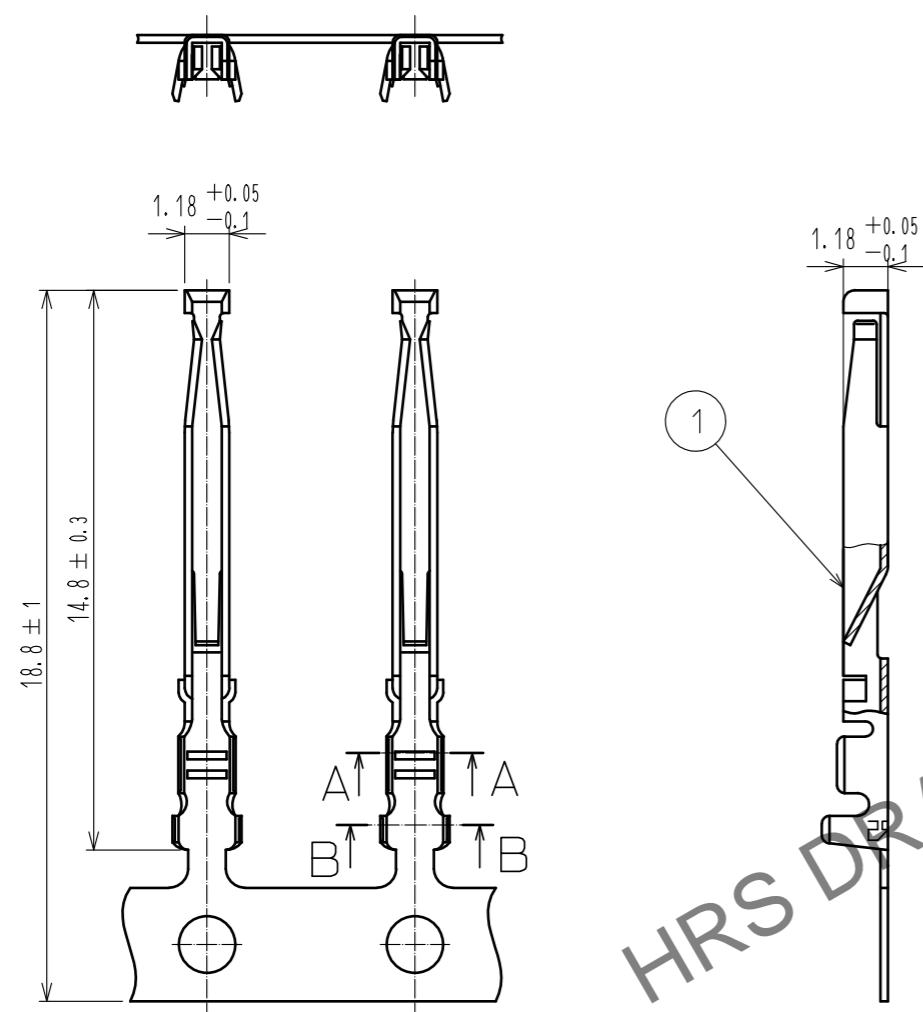


Aug.1.2024 Copyright 2024 HIROSE ELECTRIC CO., LTD. All Rights Reserved.  
 In case of consideration for using Automotive equipment / device which demand high reliability, kindly contact our sales window correspondents.



HRS DRAWING FOR REFERENCE

- Notes
1. Applicable wire : AWG#24 to 28 (Insulation diameter : φ1.15 MAX)
  2. Applicable crimp contact extraction tool : RP6-SC-TP (CL150-0039-0)
  3. Per reel : 10,000 contacts

1	Phosphor bronze	Contact portion : Gold plating 0.2μm min. Underplating : Nickel plating 1μm min.
---	-----------------	---

NO.	MATERIAL	FINISH . REMARKS	NO.	MATERIAL	FINISH . REMARKS
UNITS mm		SCALE 5 : 1	COUNT 1	DESCRIPTION OF REVISIONS	
			DESIGNED HY. KISHI		CHECKED HY. KOBAYASHI
			DATE 20240808		
APPROVED : TP. KOMATSU 20220517			DRAWING NO. EDC-396720-00-00		
CHECKED : EJ. KUNII 20220517			PART NO. HR22-SC1-221		
DESIGNED : SH. KOYAMA 20220517			CODE NO. CL0122-0095-0-00		
DRAWN : MK. WADA 20220517			1/1		

(Change in form of drawing)