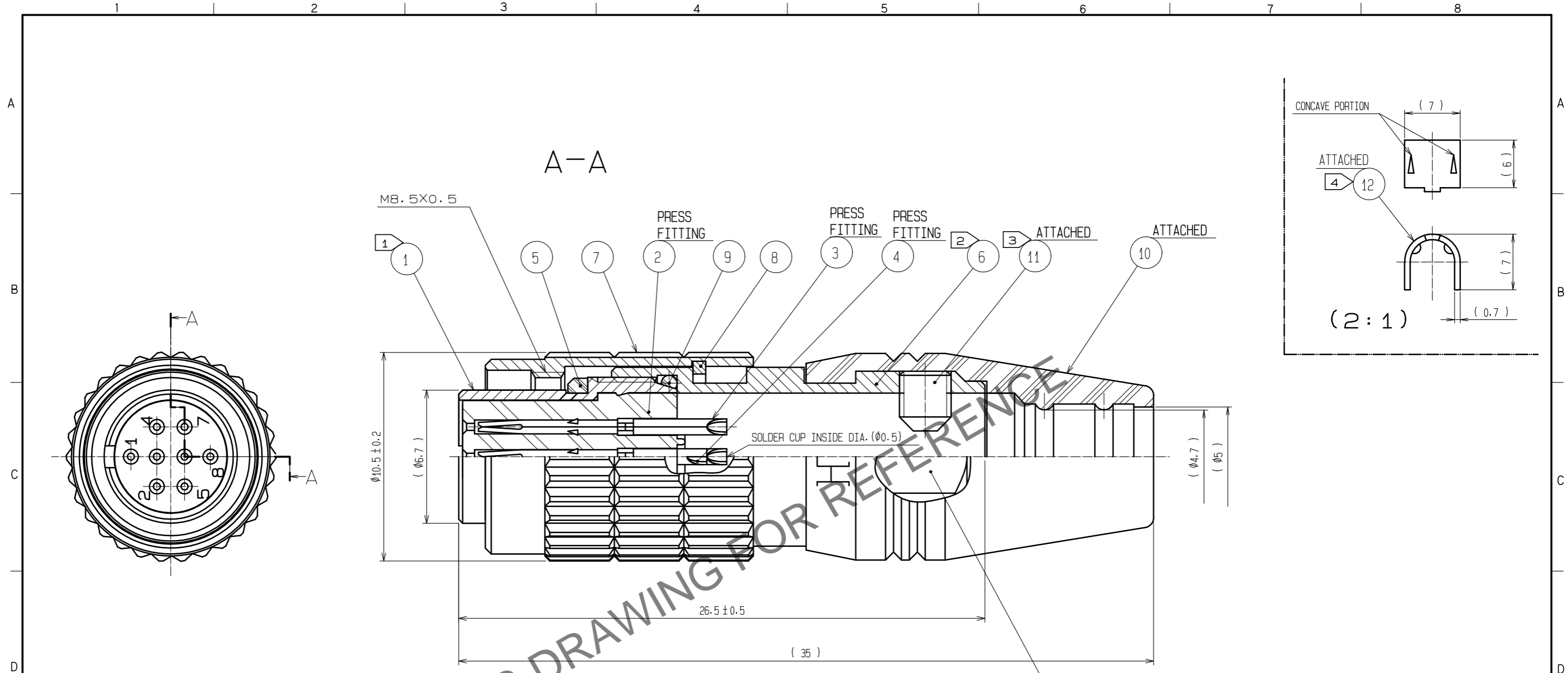


Mar.1.2025 Copyright 2025 HIROSE ELECTRIC CO., LTD. All Rights Reserved.
 In case of consideration for using Automotive equipment / device which demand high reliability, kindly contact our sales window correspondents.



- NOTES
- ① THREAD PORTION OF REF. NO. ① IS APPLIED WITH PRECOATING TO PREVENT LOOSENESS. HOWEVER, THE ADHESIVE EFFECTIVENESS IS DECREASED WHEN REUSED.
 - ⚠ THEREFORE, TREAD PORTION APPLIES TO COAT WITH LOCTITE 263 MANUFACTURED BY HENKEL JAPAN OR EQUIVALENT.
 - ② THE RECOMMENDED CLAMP TORQUE OF REF. NO. ⑥ TO BE 1 N·m.
 - ③ THE TIP OF REF. NO. ⑪ SHALL BE FIXED TO THE CONCAVE PORTION WITH REF. NO. ⑫ CLAMPED TO THE CABLE. OPPOSITE SIDE DIMENSION OF A HEXAGON SOCKET OF REF. NO. ⑪ IS 1.27mm. AND THE RECOMMENDED TIGHTENING TORQUE OF REF. NO. ⑪ TO BE 0.3 TO 0.4 N·m.
 - ④ MANUAL CRIMPING TOOL OF REF. NO. ⑫ : HR10A-TC-02(CL150-0041-2) (THE HOLE DIAMETER FOR CRIMPING : Ø5.3)
 - ⑤ ROTATION EXAMPLES OF REF. NO. ① AND ⑥ ARE SHOWN.
 - ⑥ SURFACE PLATING: GOLD 0.2µm min. TERMINAL PLATING: GOLD FLASH. UNDER PLATING: NICKEL 2µm min.
 - ⑦ THE CABLE PULL AND TWISTING STRENGTH AND OTHER CHARACTERISTICS MAY DIFFER, DEPENDING ON THE CABLE STRUCTURE. PLEASE CONFIRM BEFORE THE USE.
 - ⚠ ⑧ THE ASSEMBLY THIS PRODUCT APPLIES TO THE MANUAL ETAD-C0361-00.

6	BRASS	NICKEL PLATING	12	BRASS	
5	ETHYLENE PROPYLENE RUBBER	(BLACK)	11	STEEL	NICKLE PLATING M2. 6X0. 45X3
4	PHOSPHOR BRONZE	⑥	10	ETHYLENE PROPYLENE RUBBER	(BLACK)
3	PHOSPHOR BRONZE	⑥	9	ETHYLENE PROPYLENE RUBBER	(BLACK)
2	POLYPHENYLENE SULFIDE	(BLACK) UL94V-0	8	PHOSPHOR BRONZE	NICKEL PLATING
1	ZINC ALLOY	MATTE FINISH NICKEL PLATED	7	BRASS	NICKEL PLATING
NO.	MATERIAL	FINISH . REMARKS	NO.	MATERIAL	FINISH . REMARKS

UNITS	mm	SCALE	5 : 1	COUNT	2	DESCRIPTION OF REVISIONS	DESIGNED	CHECKED	DATE
						DIS-C-00016975	HT. ZENBA	EJ. KUNII	20240229
APPROVED : MO. SATOH		20070323		DRAWING NO.		EDC3-047752-72			
CHECKED : EJ. KUNII		20070322		PART NO.		HR25-7TP-8S(72)			
DESIGNED : HS. KAWASHIMA		20070322		CODE NO.		CL0125-0006-1-72			
DRAWN : MK. SATO		20070320							