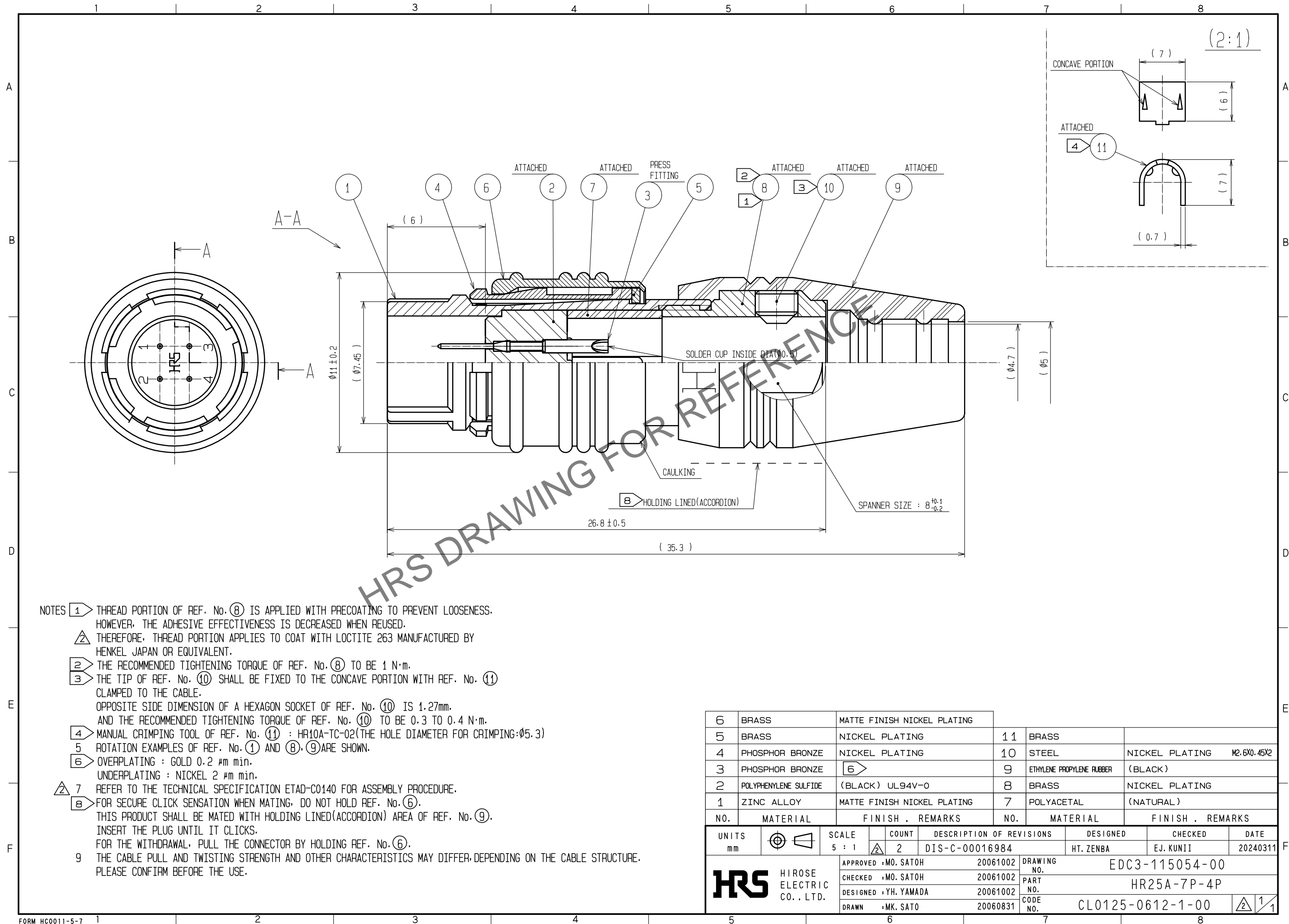


Apr.1.2024 Copyright 2024 HIROSE ELECTRIC CO., LTD. All Rights Reserved.
In case of consideration for using Automotive equipment / device which demand high reliability, kindly contact our sales window correspondents.



- NOTES
- 1. THREAD PORTION OF REF. No. ⑧ IS APPLIED WITH PRECOATING TO PREVENT LOOSENESS. HOWEVER, THE ADHESIVE EFFECTIVENESS IS DECREASED WHEN REUSED.
2. THEREFORE, THREAD PORTION APPLIES TO COAT WITH LOCTITE 263 MANUFACTURED BY HENKEL JAPAN OR EQUIVALENT.
 - 2. THE RECOMMENDED TIGHTENING TORQUE OF REF. No. ⑧ TO BE 1 N·m.
 - 3. THE TIP OF REF. No. ⑩ SHALL BE FIXED TO THE CONCAVE PORTION WITH REF. No. ⑪ CLAMPED TO THE CABLE.
OPPOSITE SIDE DIMENSION OF A HEXAGON SOCKET OF REF. No. ⑩ IS 1.27mm.
AND THE RECOMMENDED TIGHTENING TORQUE OF REF. No. ⑩ TO BE 0.3 TO 0.4 N·m.
 - 4. MANUAL CRIMPING TOOL OF REF. No. ⑪ : HR10A-TC-02(THE HOLE DIAMETER FOR CRIMPING:Ø5.3)
 - 5. ROTATION EXAMPLES OF REF. No. ① AND ⑧, ⑨ ARE SHOWN.
 - 6. OVERPLATING : GOLD 0.2 μm min.
UNDERPLATING : NICKEL 2 μm min.
 - 7. REFER TO THE TECHNICAL SPECIFICATION ETAD-C0140 FOR ASSEMBLY PROCEDURE.
 - 8. FOR SECURE CLICK SENSATION WHEN MATING, DO NOT HOLD REF. No. ⑥.
THIS PRODUCT SHALL BE MATED WITH HOLDING LINED (ACCORDION) AREA OF REF. No. ⑨.
INSERT THE PLUG UNTIL IT CLICKS.
FOR THE WITHDRAWAL, PULL THE CONNECTOR BY HOLDING REF. No. ⑥.
 - 9. THE CABLE PULL AND TWISTING STRENGTH AND OTHER CHARACTERISTICS MAY DIFFER, DEPENDING ON THE CABLE STRUCTURE.
PLEASE CONFIRM BEFORE THE USE.

6	BRASS	MATTE FINISH NICKEL PLATING			
5	BRASS	NICKEL PLATING	11	BRASS	
4	PHOSPHOR BRONZE	NICKEL PLATING	10	STEEL	NICKEL PLATING M2.6X0.45X2
3	PHOSPHOR BRONZE	6	9	ETHYLENE PROPYLENE RUBBER	(BLACK)
2	POLYPHENYLENE SULFIDE	(BLACK) UL94V-0	8	BRASS	NICKEL PLATING
1	ZINC ALLOY	MATTE FINISH NICKEL PLATING	7	POLYACETAL	(NATURAL)
NO.	MATERIAL	FINISH . REMARKS	NO.	MATERIAL	FINISH . REMARKS
UNITS mm		SCALE 5 : 1	COUNT 2	DESCRIPTION OF REVISIONS DIS-C-00016984	DESIGNED HT. ZENBA
HIROSE ELECTRIC CO., LTD.		APPROVED : MO. SATOH	20061002	DRAWING NO.	EDC3-115054-00
		CHECKED : MO. SATOH	20061002	PART NO.	HR25A-7P-4P
		DESIGNED : YH. YAMADA	20061002	CODE NO.	CL0125-0612-1-00
		DRAWN : MK. SATO	20060831		
					1/1