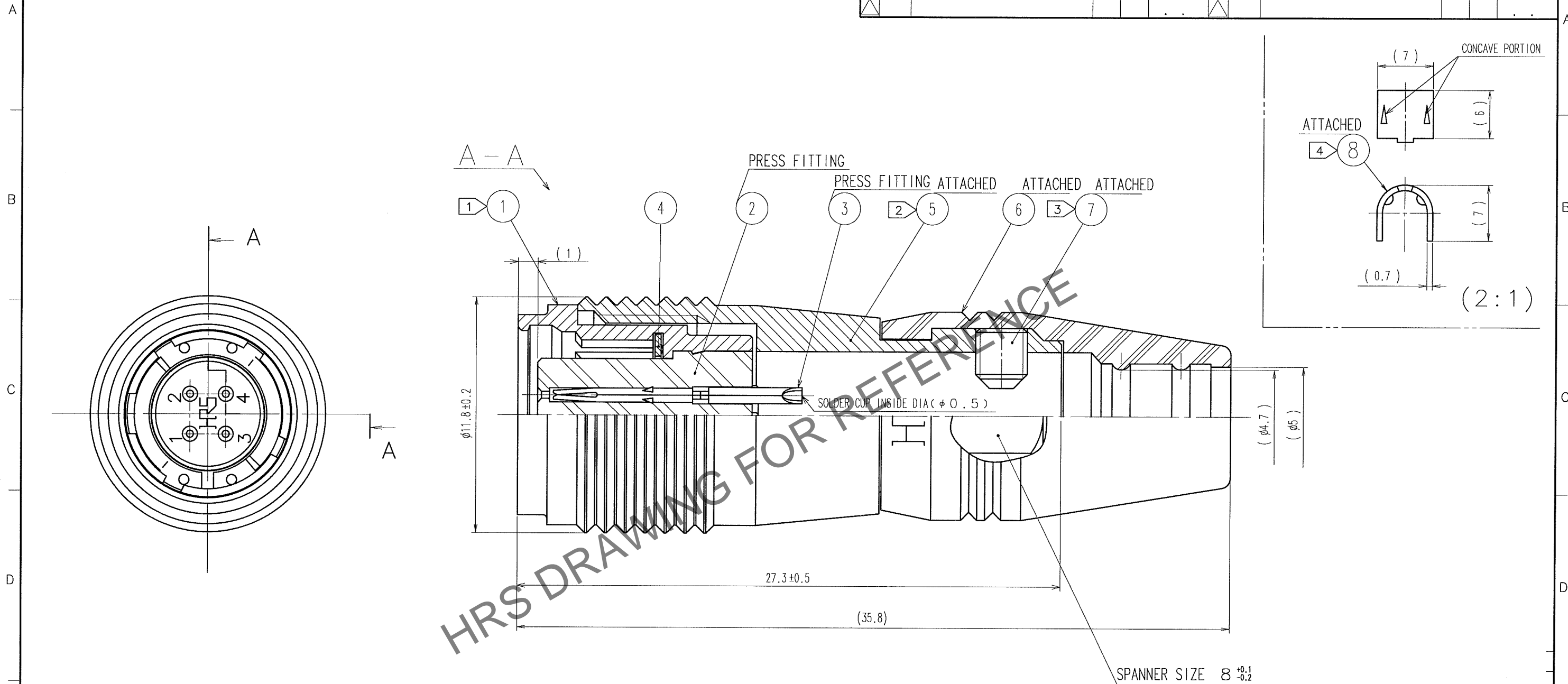


May.1.2024 Copyright 2024 HIROSE ELECTRIC CO., LTD. All Rights Reserved.
In case of consideration for using Automotive equipment / device which demand high reliability, kindly contact our sales window correspondents.

5					6					7					8				
COUNT	DESCRIPTION OF REVISIONS				BY	CHKD	DATE			COUNT	DESCRIPTION OF REVISIONS				BY	CHKD	DATE		
△							..			△							..		
△							..			△							..		
△							..			△							..		



- NOTES
- 1 THREAD PORTION OF REF. No. ① IS APPLIED WITH PRECOATING TO PREVENT LOOSENESS. HOWEVER, THE ADHESIVE EFFECTIVENESS IS DECREASED WHEN REUSED. THEREFORE, THREAD PORTION IS RECOMMENDED TO COAT WITH LOCTITE 271 MANUFACTURED BY HENKEL JAPAN OR EQUIVALENT.
 - 2 THE RECOMMENDED TIGHTENING TORQUE OF REF. No. ⑤ TO BE 1 N·m.
 - 3 THE TIP OF REF. No. ⑦ SHALL BE FIXED TO THE CONCAVE PORTION WITH REF. No. ⑧ CLAMPED TO THE CABLE. OPPOSITE SIDE DIMENSION OF A HEXAGON SOCKET OF REF. No. ⑦ IS 1.27mm. AND THE RECOMMENDED TIGHTENING TORQUE OF REF. No. ⑦ TO BE 0.3 TO 0.4 N·m.
 - 4 MANUAL CRIMPING TOOL OF REF. No. ⑧ : HR10A-TC-02 (THE HOLE DIAMETER FOR CRIMPING: φ 5.3)
 - 5 ROTATION EXAMPLES OF REF. No. ① AND ⑤⑥ ARE SHOWN.
 - 6 CONTACT AREA : GOLD 0.2μm min. TERMINAL AREA: GOLD FLASH. UNDERPLATING : NICKEL 2μm min.
 - 7 REFER TO THE TECHNICAL SPECIFICATION ATAD-C0140 FOR ASSEMBLY PROCEDURE.
 - 8 THE CABLE STRENGTH, ROTATORY STRENGTH AND OTHER CHARACTERISTICS MAY DIFFER, DEPENDING ON THE CABLE STRUCTURE. PLEASE CONFIRM BEFORE THE USE.

4	BERYLLIUM COPPER	NICKEL PLATING	8	BRASS			
3	PHOSPHOR BRONZE	⑥	7	STEEL	NICKEL PLATING M2.6×0.45×3		
2	POLYPHENYLENE SULFIDE	(BLACK) 9 4 V - 0	6	ETHYLENE PROPYLENE RUBBER	(BLACK)		
1	ZINC ALLOY	MATTE FINISH NICKEL PLATING	5	BRASS	MATTE FINISH NICKEL PLATING		
NO.	MATERIAL	FINISH, REMARKS	NO.	MATERIAL	FINISH, REMARKS		
CODE NO. (OLD) CL			DRAWN <i>M. Sato</i> 06.09.28	DESIGNED <i>Y. Yamashita</i> 06.09.28	CHECKED <i>/</i> . .	APPROVED <i>M. Sato</i> 06.09.28	RELEASED <i>.</i> . .
		DRAWING NO. EDC3-115076		PART NO. HR25A-7J-4S			
SCALE 5 : 1				CODE NO. CL125-0634-4-00			1 1
UNITS mm							
		HIROSE ELECTRIC CO., LTD					