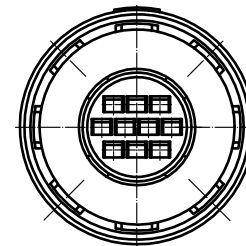
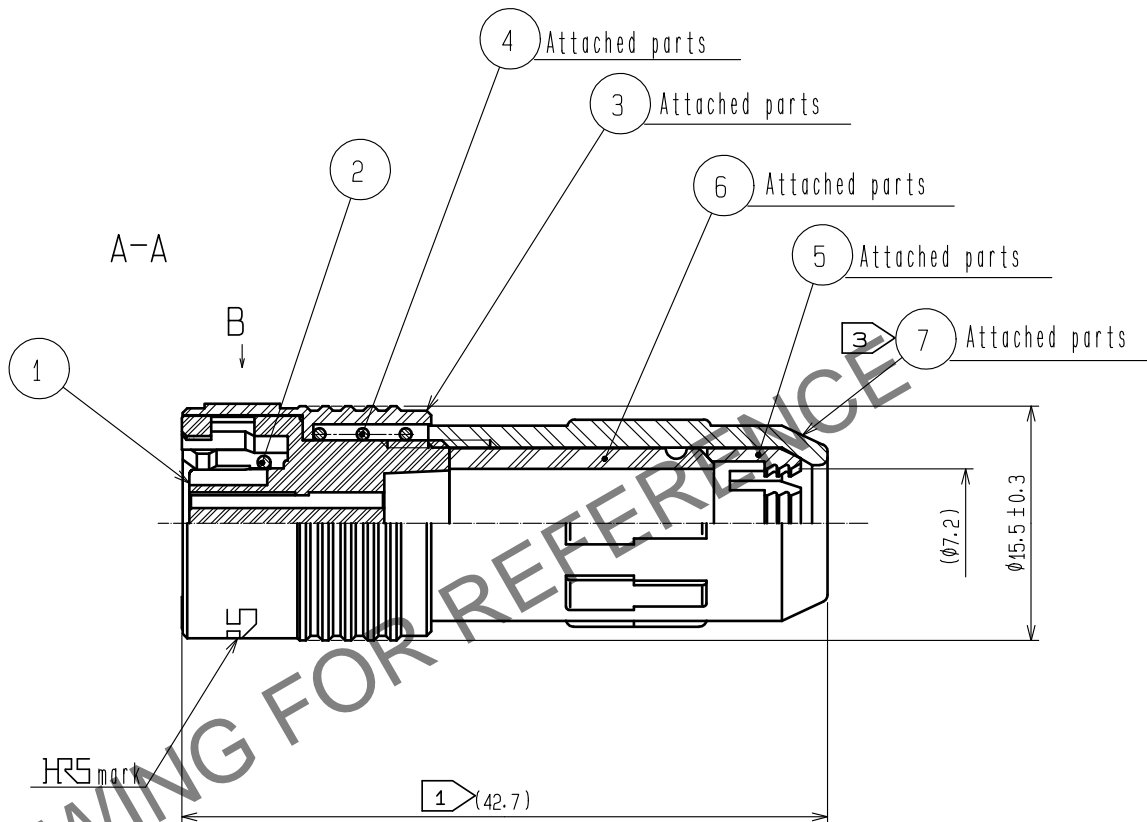
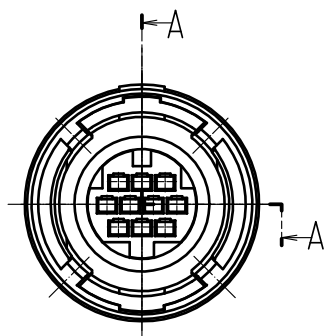
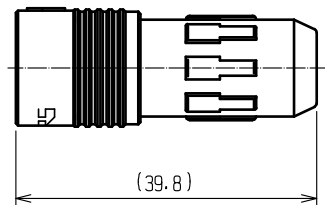
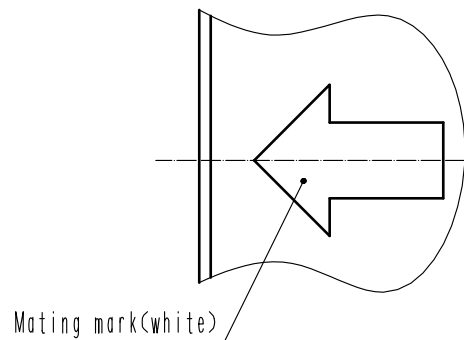


May.1.2024 Copyright 2024 HIROSE ELECTRIC CO., LTD. All Rights Reserved.  
In case of consideration for using Automotive equipment / device which demand high reliability, kindly contact our sales window correspondents.

Life size(1:1)



B(5:1)



- Notes
- ① Total length becomes  $39.8 \pm 1$  when Ref.No. ⑦ is screwed into Ref.No. ① completely.
  - ② Applicable crimping contact:HR30-SC-211  
(Applicable wire: 26~30 AWG wire jacket diameter:  $\phi 1$  max)  
Applicable crimp contact extraction tool:HR30-TP
  - ③ The recommended clump torque of Ref.No. ⑦ to be 0.45 to 0.5 N·m.  
To prevent loosening, apply LOCTITE 263 and LOCK PRIMER 7649 manufactured by HENKEL JAPAN Co., Ltd. according to the Loctite Coating Procedure Manual (ETAD-C0151-00).  
Spacer for assembly is available HR30-8P-T02.  
Table for assembly is available HR30-7P-10SC-T01.
  - ④ The cable pull and twisting strength, waterproof tightness and other characteristics may differ, depending on the cable structure, please confirm before the use.
  - ⑤ The assembly this product applies to the manual ETAD-C0509-00.

4	Stainless steel				
3	Polybutylene terephthalate	(Black) UL94V-0	7	Polyphenylen sulfide	(Black) UL94V-0
2	Silicone rubber	(Red)	6	Chloroprene rubber	(Black)
1	Polyphenylen sulfide	(Black) UL94V-0	5	Polyacetal	(Natural:Milky white) ⑤
NO.	MATERIAL	FINISH . REMARKS	NO.	MATERIAL	FINISH . REMARKS
UNITS mm		SCALE 2 : 1	COUNT ④ 4	DESCRIPTION OF REVISIONS DIS-C-00015199	DESIGNED HY. KISHI
HIROSE ELECTRIC CO., LTD.		APPROVED : MR. YOSHIDA	20050105	DRAWING NO.	EDC3-112152-71
		CHECKED : MO. SATOH	20050105	PART NO.	HR30-7P-10SC(71)
		DESIGNED : YH. YAMADA	20050105	CODE NO.	CL0130-0013-2-71 ② 1/1
		DRAWN : YH. YAMADA	20050105		