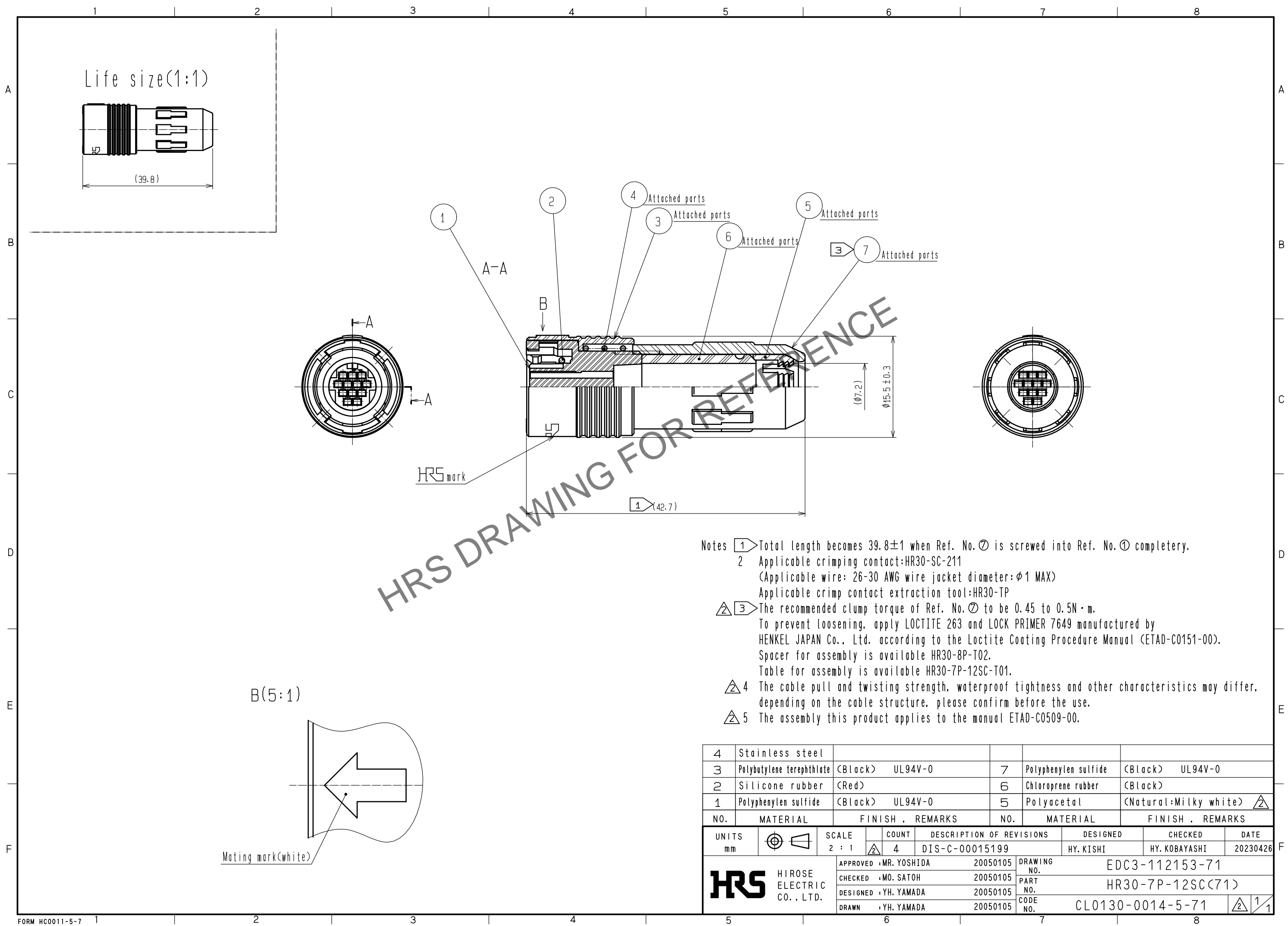

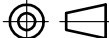




May.1.2024 Copyright 2024 HIROSE ELECTRIC CO., LTD. All Rights Reserved.
In case of consideration for using Automotive equipment / device which demand high reliability, kindly contact our sales window correspondents.



- Notes
- ① Total length becomes 39.8±1 when Ref. No. ⑦ is screwed into Ref. No. ① completely.
 - ② Applicable crimping contact:HR30-SC-211
(Applicable wire: 26-30 AWG wire jacket diameter:φ1 MAX)
Applicable crimp contact extraction tool:HR30-TP
 - ③ The recommended clump torque of Ref. No. ⑦ to be 0.45 to 0.5N・m.
To prevent loosening, apply LOCTITE 263 and LOCK PRIMER 7649 manufactured by HENKEL JAPAN Co., Ltd. according to the Loctite Coating Procedure Manual (ETAD-C0151-00).
Spacer for assembly is available HR30-8P-T02.
Table for assembly is available HR30-7P-12SC-T01.
 - ④ The cable pull and twisting strength, waterproof tightness and other characteristics may differ, depending on the cable structure, please confirm before the use.
 - ⑤ The assembly this product applies to the manual ETAD-C0509-00.

4	Stainless steel									
3	Polybutylene terephthlate	(Black)	UL94V-0	7	Polyphenylen sulfide (Black) UL94V-0					
2	Silicone rubber	(Red)		6	Chloroprene rubber (Black)					
1	Polyphenylen sulfide	(Black)	UL94V-0	5	Polyacetal (Natural:Milky white) 					
NO.	MATERIAL	FINISH . REMARKS		NO.	MATERIAL	FINISH . REMARKS				
UNITS mm				SCALE 2 : 1		COUNT 4	DESCRIPTION OF REVISIONS DIS-C-00015199	DESIGNED HY. KISHI	CHECKED HY. KOBAYASHI	DATE 20230426
 HIROSE ELECTRIC CO., LTD.				APPROVED :MR. YOSHIDA		20050105	DRAWING NO. EDC3-112153-71			
				CHECKED :MO. SATOH		20050105	PART NO. HR30-7P-12SC(71)			
				DESIGNED :YH. YAMADA		20050105	CODE NO. CL0130-0014-5-71			
				DRAWN :YH. YAMADA		20050105	