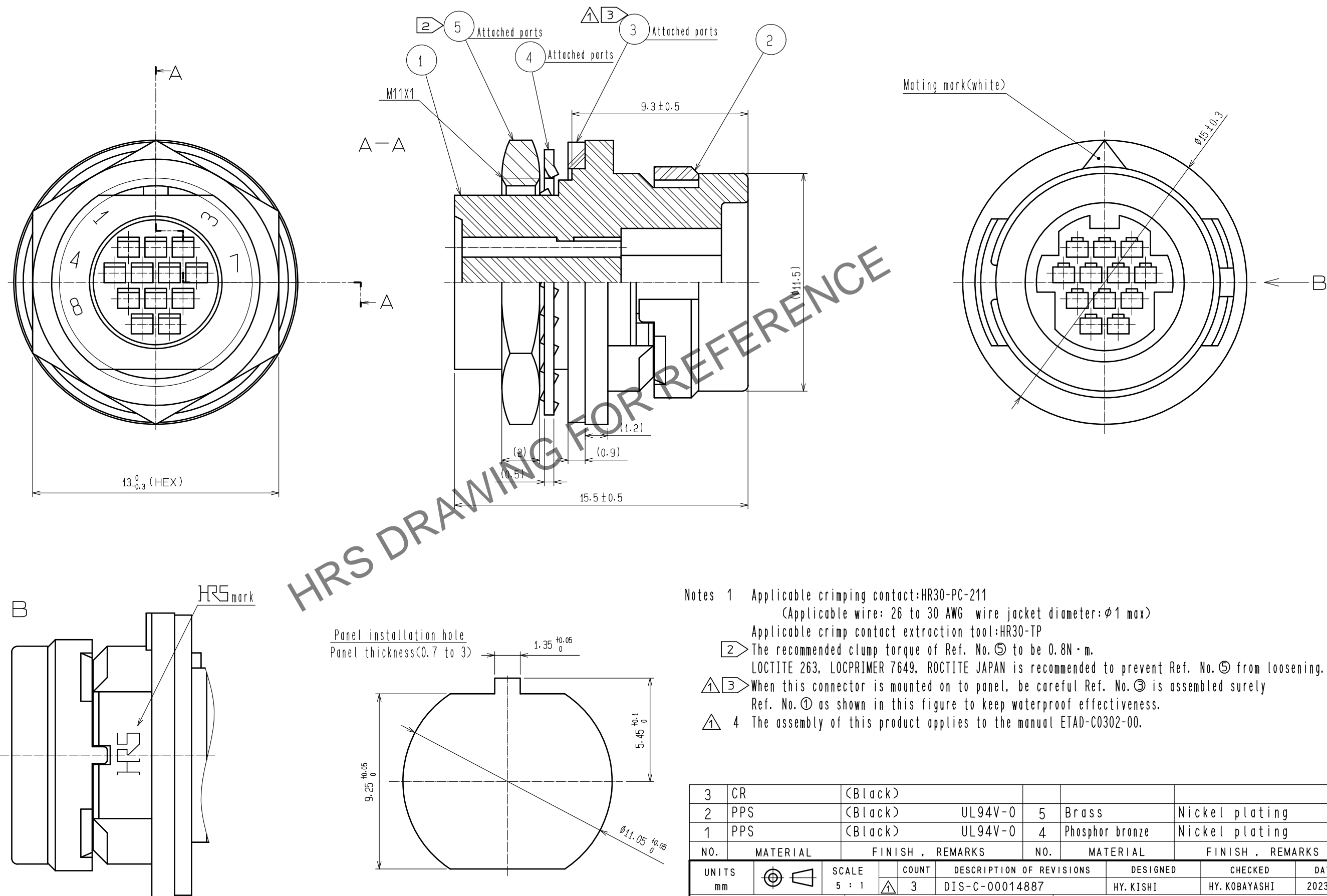
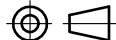




Jun.1.2024 Copyright 2024 HIROSE ELECTRIC CO., LTD. All Rights Reserved.
In case of consideration for using Automotive equipment / device which demand high reliability, kindly contact our sales window correspondents.



- Notes 1 Applicable crimping contact:HR30-PC-211
(Applicable wire: 26 to 30 AWG wire jacket diameter:φ1 max)
Applicable crimp contact extraction tool:HR30-TP
- 2 The recommended clamp torque of Ref. No. 5 to be 0.8N・m.
LOCTITE 263, LOCPRIMER 7649, ROCTITE JAPAN is recommended to prevent Ref. No. 5 from loosening.
- 3 When this connector is mounted on to panel, be careful Ref. No. 3 is assembled surely
Ref. No. 1 as shown in this figure to keep waterproof effectiveness.
- 4 The assembly of this product applies to the manual ETAD-C0302-00.

3	CR	(Black)				
2	PPS	(Black)	UL94V-0	5	Brass	Nickel plating
1	PPS	(Black)	UL94V-0	4	Phosphor bronze	Nickel plating
NO.	MATERIAL	FINISH . REMARKS		NO.	MATERIAL	FINISH . REMARKS

UNITS mm		SCALE 5 : 1		COUNT 3	DESCRIPTION OF REVISIONS DIS-C-00014887	DESIGNED HY. KISHI	CHECKED HY. KOBAYASHI	DATE 20230328

 HIROSE ELECTRIC CO., LTD.	APPROVED :HY. KOBAYASHI	20180312	DRAWING NO.	EDC-112155-31-00	
	CHECKED :HY. KOBAYASHI	20180312	PART NO.	HR30-7R-12PC(31)	
	DESIGNED :DS. MATSUNE	20180312	CODE NO.	CL0130-1013-8-31	
	DRAWN :DS. MATSUNE	20180312	