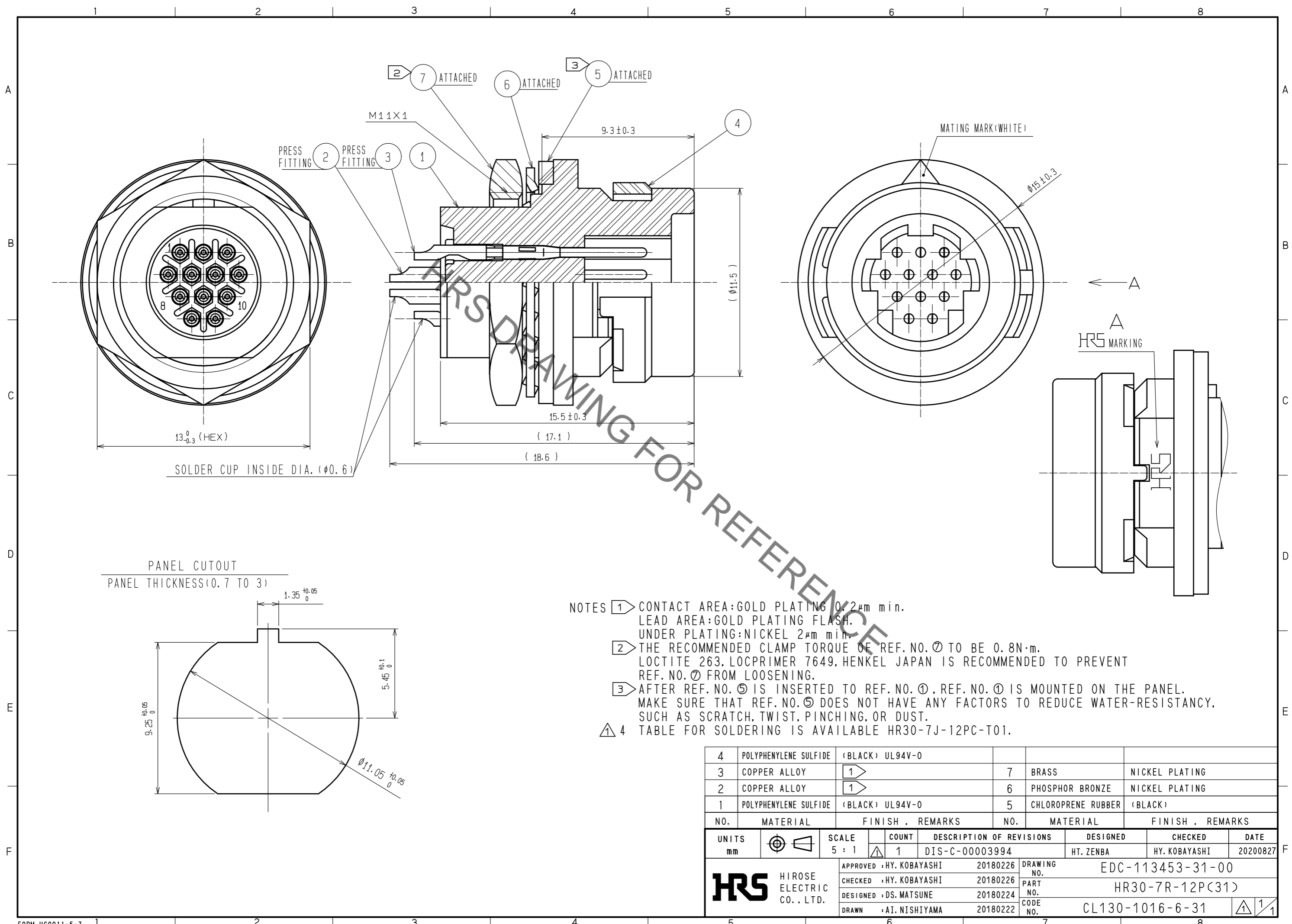


Jan.1.2023 Copyright 2023 HIROSE ELECTRIC CO., LTD. All Rights Reserved.
In case of consideration for using Automotive equipment / device which demand high reliability, kindly contact our sales window correspondents.



- NOTES
- ① CONTACT AREA:GOLD PLATING 0.2μm min.
LEAD AREA:GOLD PLATING FLASH.
UNDER PLATING:NICKEL 2μm min.
 - ② THE RECOMMENDED CLAMP TORQUE OF REF.NO.⑦ TO BE 0.8N·m.
LOCTITE 263, LOCPRIMER 7649, HENKEL JAPAN IS RECOMMENDED TO PREVENT REF. NO. ⑦ FROM LOOSENING.
 - ③ AFTER REF. NO. ⑤ IS INSERTED TO REF. NO. ①, REF. NO. ① IS MOUNTED ON THE PANEL.
MAKE SURE THAT REF. NO. ⑤ DOES NOT HAVE ANY FACTORS TO REDUCE WATER-RESISTANCY,
SUCH AS SCRATCH, TWIST, PINCHING, OR DUST.
 - ⚠ 4 TABLE FOR SOLDERING IS AVAILABLE HR30-7J-12PC-T01.

4	POLYPHENYLENE SULFIDE	(BLACK) UL94V-0			
3	COPPER ALLOY	①	7	BRASS	NICKEL PLATING
2	COPPER ALLOY	①	6	PHOSPHOR BRONZE	NICKEL PLATING
1	POLYPHENYLENE SULFIDE	(BLACK) UL94V-0	5	CHLOROPRENE RUBBER	(BLACK)
NO.	MATERIAL	FINISH . REMARKS	NO.	MATERIAL	FINISH . REMARKS
UNITS	mm	SCALE	5 : 1	COUNT	1
DESCRIPTION OF REVISIONS			DESIGNED	CHECKED	DATE
DIS-C-00003994			HT. ZENBA	HY. KOBAYASHI	20200827
APPROVED :HY. KOBAYASHI 20180226			DRAWING NO. EDC-113453-31-00		
CHECKED :HY. KOBAYASHI 20180226			PART NO. HR30-7R-12P(31)		
DESIGNED :DS. MATSUNE 20180224			CODE NO. CL130-1016-6-31		
DRAWN :AI. NISHIYAMA 20180222			1/1		