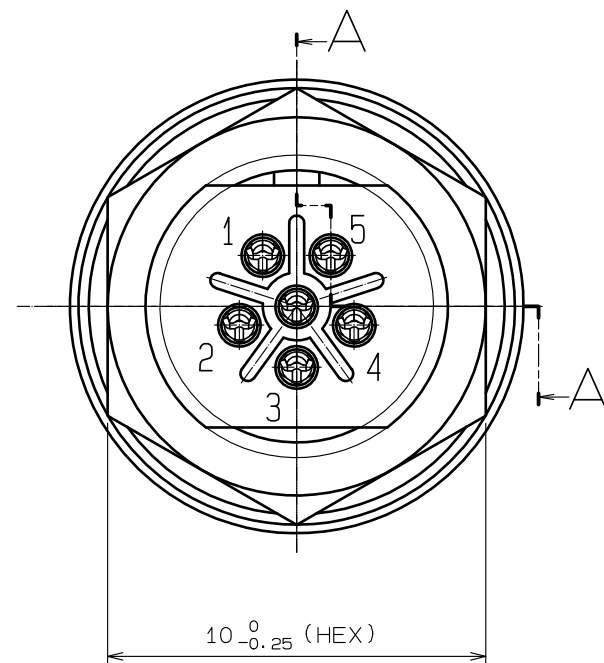
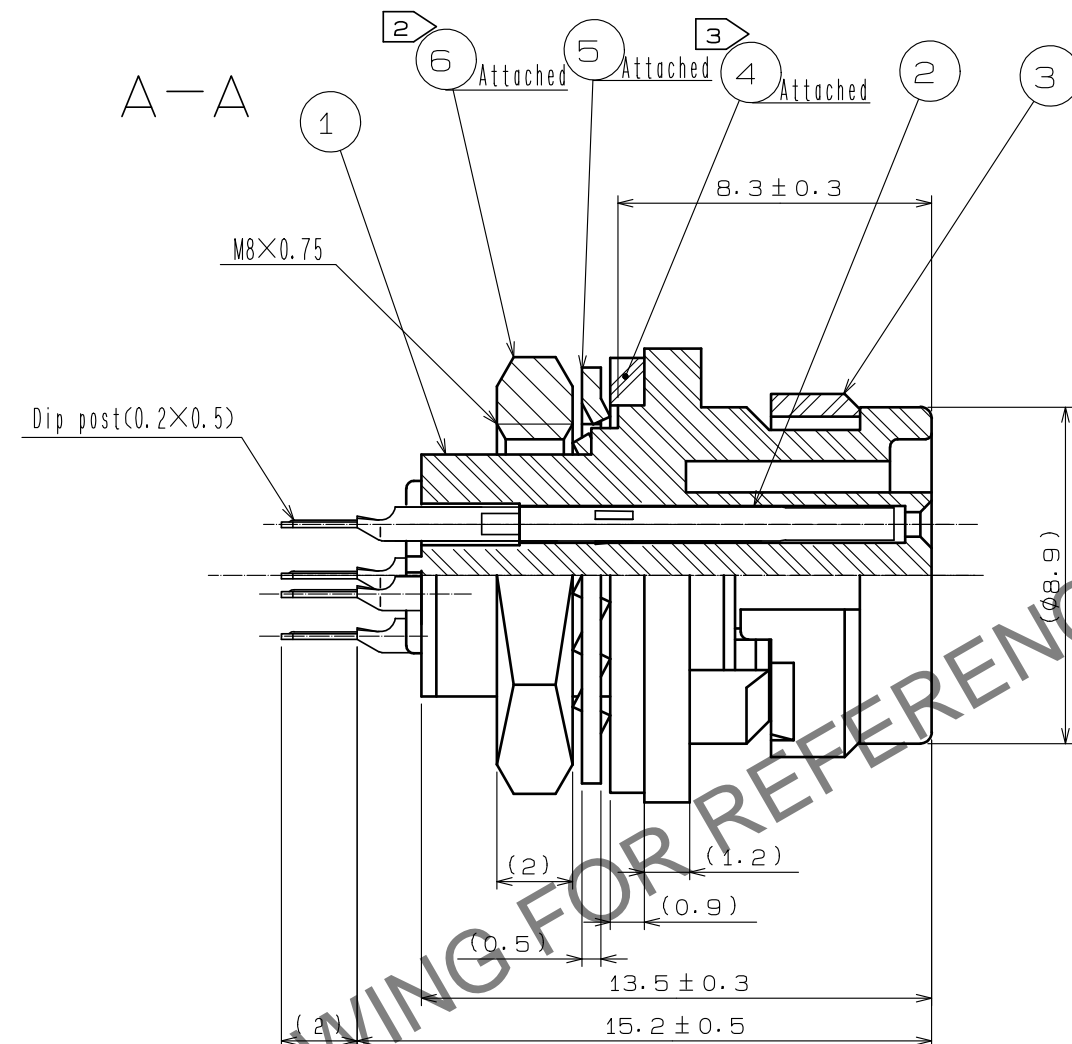
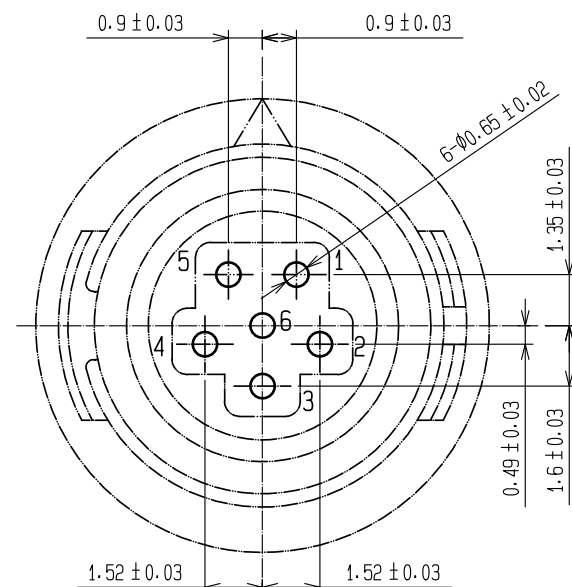


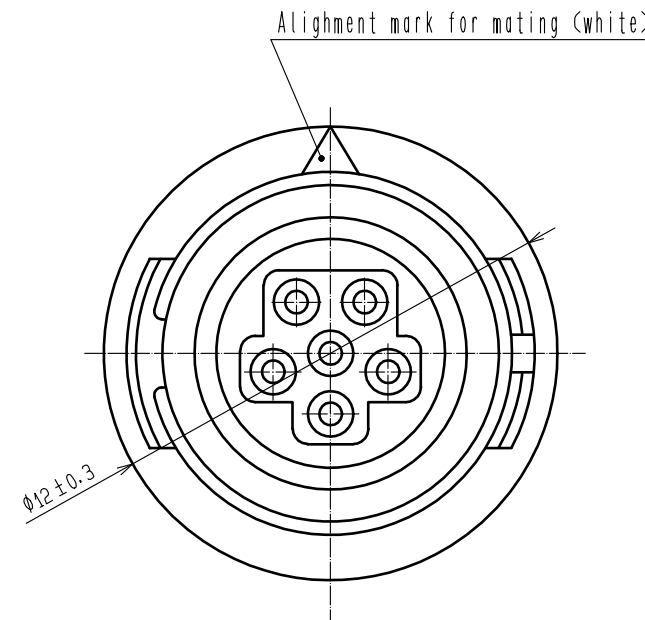
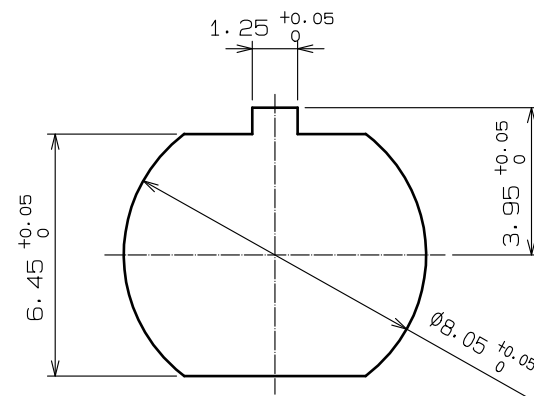
Jun.1.2024 Copyright 2024 HIROSE ELECTRIC CO., LTD. All Rights Reserved.
In case of consideration for using Automotive equipment / device which demand high reliability, kindly contact our sales window correspondents.



Dip post location dimensions in the view
from connector opening side
(Recommended maximum panel thickness : 1.2)



Panel installation hole
Panel thickness(0.7 to 2)



- Notes
- ① Finish of Ref.No. ②
Contact area : gold 0.2μm min.
Dip area : gold flash.
Under plating: nickel 2μm min.
 - ② Recommended tightening torque of Ref.No. ⑥ : 0.5 N·m.
Loosened nut may cause the deterioration of water-resistance.
The use of loosening-preventive adhesive is strongly recommended.
Recommended thread locker : LOCTITE 263 , LOCKPRIMER 7649, HENKEL JAPAN LTD.
 - ③ After Ref.No. ④ is inserted to Ref.No. ④ , Ref.No. ① is mounted on the panel.
Make sure that Ref.No. ④ does not have any factors to reduce water-resistance,
such as scratch, twist, pinching, or dust.
 - ④ The assembly of this product applies to the manual ETAD-C0302-00.

3	PPS	(Black)	UL94V-0	6	Brass	Nickel plating
2	Copper alloy	①		5	Phosphor bronze	Nickel plating
1	PPS	(Black)	UL94V-0	4	CR	(Black)
NO.	MATERIAL	FINISH , REMARKS		NO.	MATERIAL	FINISH , REMARKS
UNITS mm		SCALE 5 : 1	COUNT 2	DESCRIPTION OF REVISIONS DIS-C-00014887		DESIGNED HY. KISHI
HRS HIROSE ELECTRIC CO., LTD.		APPROVED : MO. SATOH	20051021	DRAWING NO. EDC3-113559-71		
		CHECKED : MO. SATOH	20051021	PART NO. HR30-6R-6SD(71)		
		DESIGNED : EJ. KUNII	20051021	CODE NO. CL0130-1021-6-71		
		DRAWN : EJ. KUNII	20051021			
				CHECKED HY. KOBAYASHI		DATE 20230328