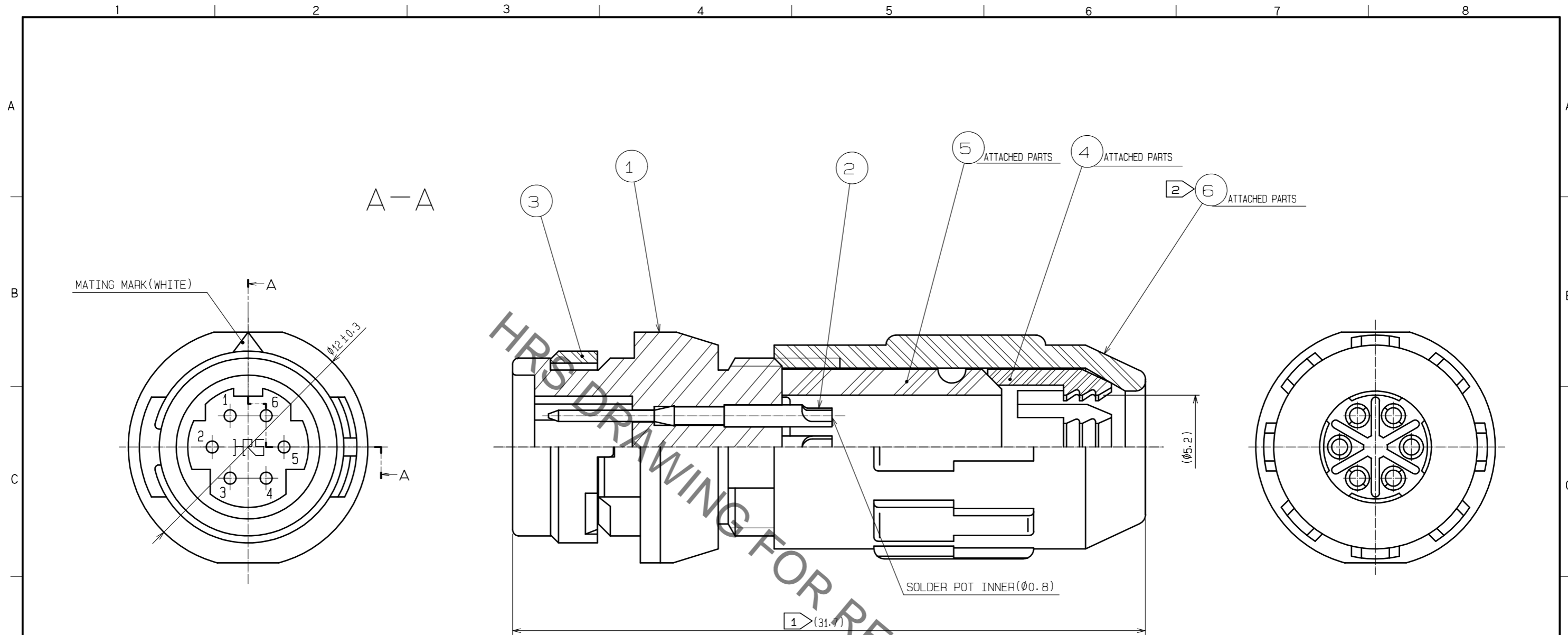


Jan.1.2023 Copyright 2023 HIROSE ELECTRIC CO., LTD. All Rights Reserved.
In case of consideration for using Automotive equipment / device which demand high reliability, kindly contact our sales window correspondents.



- NOTES
- 1 TOTAL LENGTH BECOMES 28.8±1 WHEN 6 IS SCREWED INTO 1 COMPLETELY.
 - 2 THE RECOMMENDED CLUMP TORQUE OF REF. NO. 6 TO BE 0.5N·m.
LOCTITE 263, LOCPRIMER 7649, HENKEL JAPAN IS RECOMMENDED TO PREVENT REF. NO. 6 FROM LOOSENING.
SPACER FOR ASSEMBLY IS AVAILABLE HR30-6P-T02.
 - 3 TABLE FOR ASSEMBLY AND SOLDERING IS AVAILABLE HR30-6R-6P-T01.
 - 4 SURFACE PLATING: GOLD PLATING 0.2µm min.
UNDER PLATING: NICKEL PLATING 2µm min.
 - 5 THE CABLE PULL AND TWISTING STRENGTH AND OTHER CHARACTERISTICS MAY DIFFER,
DEPENDING ON THE CABLE STRUCTURE.
PLEASE CONFIRM BEFORE THE USE.

3	PPS	(BLACK) UL94V-0	6	PBT	(BLACK) UL94V-0				
2	BRASS	4	5	CR	(BLACK)				
1	PPS	(BLACK) UL94V-0	4	POLYACETAL	(NATURAL)				
NO.	MATERIAL	FINISH . REMARKS	NO.	MATERIAL	FINISH . REMARKS				
UNITS	mm	SCALE	5 : 1	COUNT	1	DESCRIPTION OF REVISIONS	DESIGNED	CHECKED	DATE
						DIS-C-00002603	HY. KISHI	HY. KOBAYASHI	18.09.05
HIROSE ELECTRIC CO., LTD.		APPROVED	HY. KOBAYASHI	18.02.26	DRAWING NO.	EDC-112103-31-00			
		CHECKED	HY. KOBAYASHI	18.02.26	PART NO.	HR30-6J-6P(31)			
		DESIGNED	DS. MATSUNE	18.02.26	CODE NO.	CL130-2009-6-31			
		DRAWN	DS. MATSUNE	18.02.26					