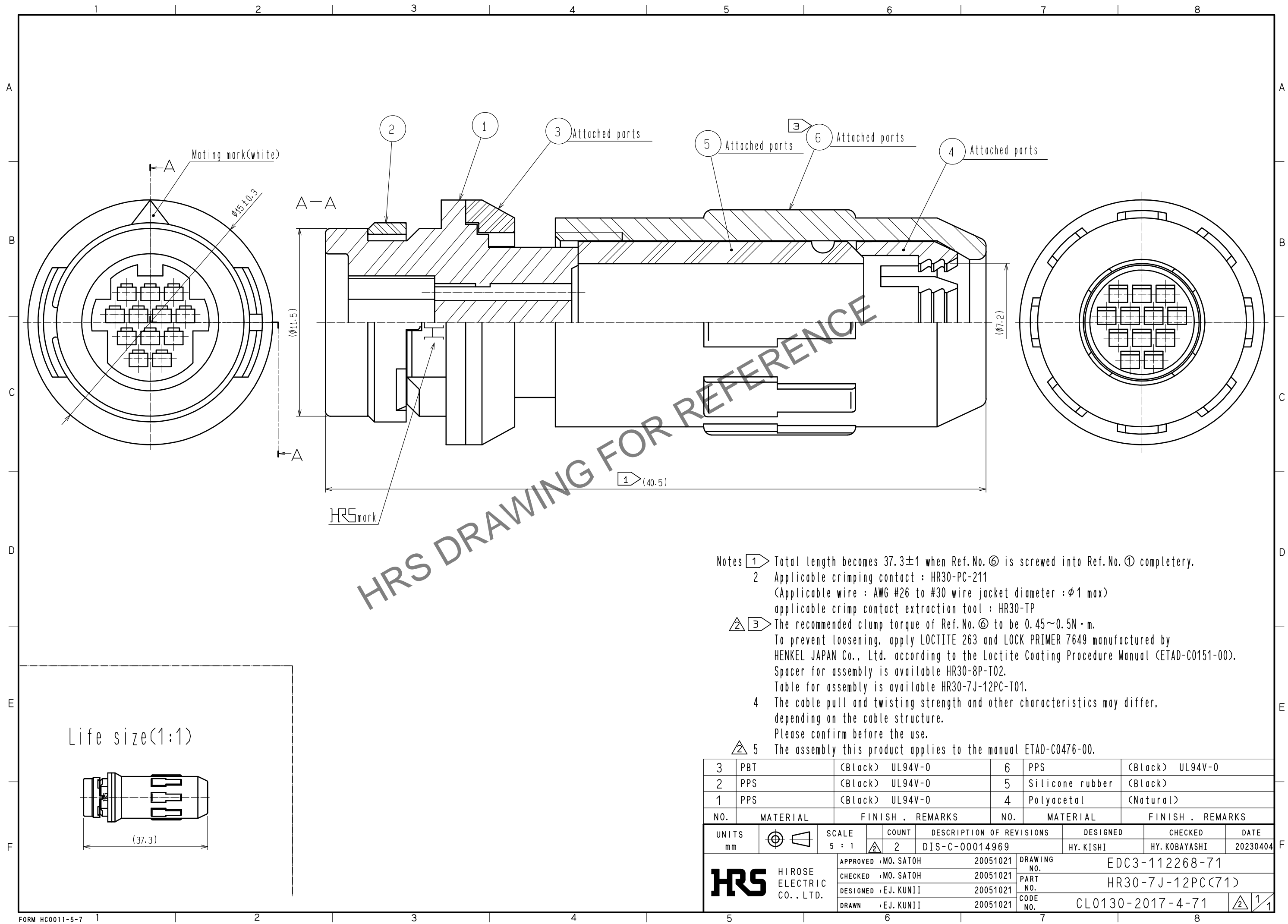


May.1.2024 Copyright 2024 HIROSE ELECTRIC CO., LTD. All Rights Reserved.
In case of consideration for using Automotive equipment / device which demand high reliability, kindly contact our sales window correspondents.



- Notes
- ① Total length becomes 37.3 ± 1 when Ref.No. ⑥ is screwed into Ref.No. ① completely.
 - ② Applicable crimping contact : HR30-PC-211
(Applicable wire : AWG #26 to #30 wire jacket diameter : $\phi 1$ max)
applicable crimp contact extraction tool : HR30-TP
 - ③ The recommended clump torque of Ref.No. ⑥ to be $0.45 \sim 0.5N \cdot m$.
To prevent loosening, apply LOCTITE 263 and LOCK PRIMER 7649 manufactured by HENKEL JAPAN Co., Ltd. according to the Loctite Coating Procedure Manual (ETAD-C0151-00).
Spacer for assembly is available HR30-8P-T02.
Table for assembly is available HR30-7J-12PC-T01.
 - ④ The cable pull and twisting strength and other characteristics may differ, depending on the cable structure.
Please confirm before the use.
 - ⑤ The assembly this product applies to the manual ETAD-C0476-00.

3	PBT	(Black)	UL94V-0	6	PPS	(Black)	UL94V-0
2	PPS	(Black)	UL94V-0	5	Silicone rubber	(Black)	
1	PPS	(Black)	UL94V-0	4	Polyacetal	(Natural)	
NO.	MATERIAL	FINISH . REMARKS		NO.	MATERIAL	FINISH . REMARKS	
UNITS		SCALE	COUNT	DESCRIPTION OF REVISIONS		DESIGNED	CHECKED
mm		5 : 1	②	DIS-C-00014969		HY. KISHI	HY. KOBAYASHI
HIROSE ELECTRIC CO., LTD.		APPROVED	MO. SATOH	20051021	DRAWING NO.	EDC3-112268-71	
		CHECKED	MO. SATOH	20051021	PART NO.	HR30-7J-12PC(71)	
		DESIGNED	EJ. KUNII	20051021	CODE NO.	CL0130-2017-4-71	
		DRAWN	EJ. KUNII	20051021			
							② 1/1