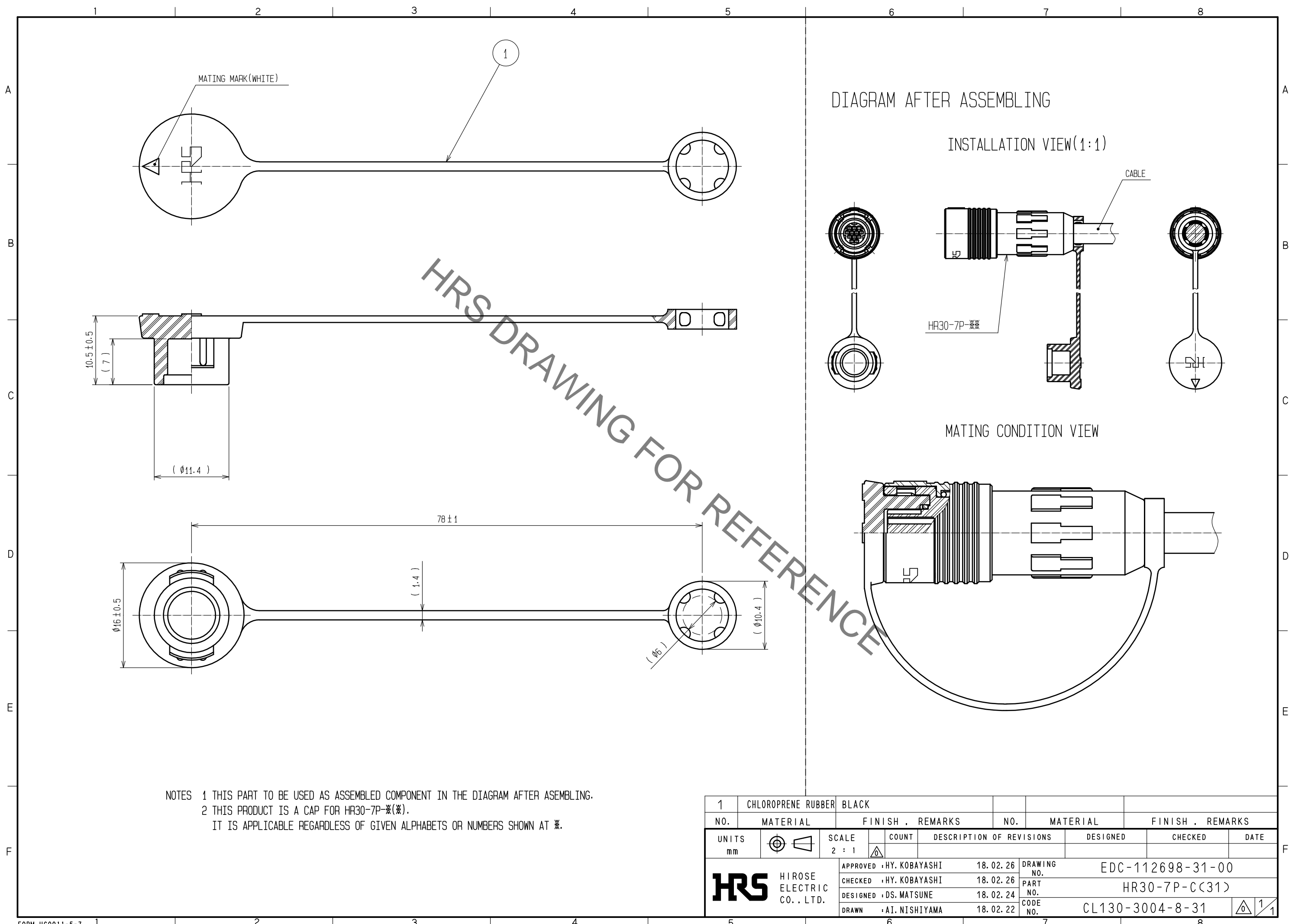


Jan.1.2023 Copyright 2023 HIROSE ELECTRIC CO., LTD. All Rights Reserved.
In case of consideration for using Automotive equipment / device which demand high reliability, kindly contact our sales window correspondents.



NOTES 1 THIS PART TO BE USED AS ASSEMBLED COMPONENT IN THE DIAGRAM AFTER ASEMBLING.
2 THIS PRODUCT IS A CAP FOR HR30-7P-*(*)
IT IS APPLICABLE REGARDLESS OF GIVEN ALPHABETS OR NUMBERS SHOWN AT *.

1	CHLOROPRENE RUBBER	BLACK					
NO.	MATERIAL	FINISH . REMARKS	NO.	MATERIAL	FINISH . REMARKS		
UNITS		SCALE	COUNT	DESCRIPTION OF REVISIONS		DESIGNED	CHECKED
mm		2 : 1					
HRS HIROSE ELECTRIC CO., LTD.		APPROVED : HY. KOBAYASHI	18.02.26	DRAWING NO.		EDC-112698-31-00	
		CHECKED : HY. KOBAYASHI	18.02.26	PART NO.		HR30-7P-C(31)	
		DESIGNED : DS. MATSUNE	18.02.24	CODE NO.		CL130-3004-8-31	
		DRAWN : AI. NISHIYAMA	18.02.22				