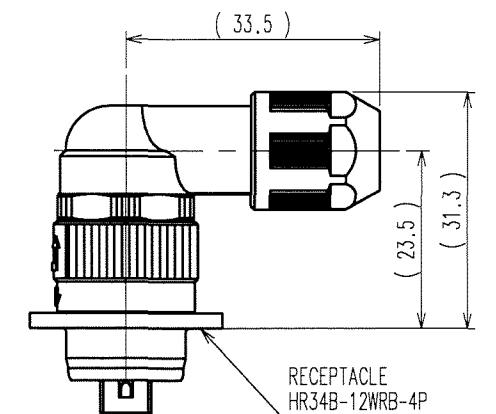
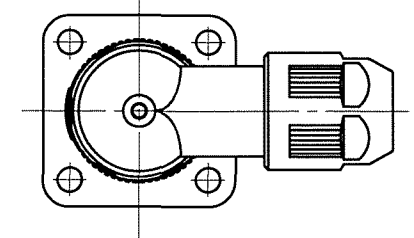
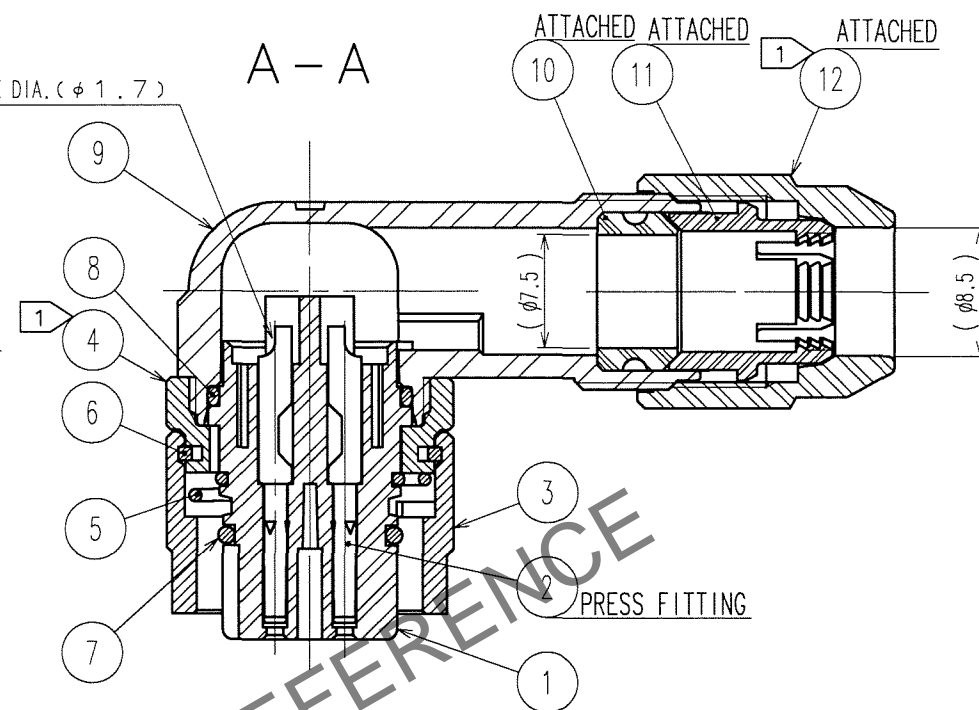
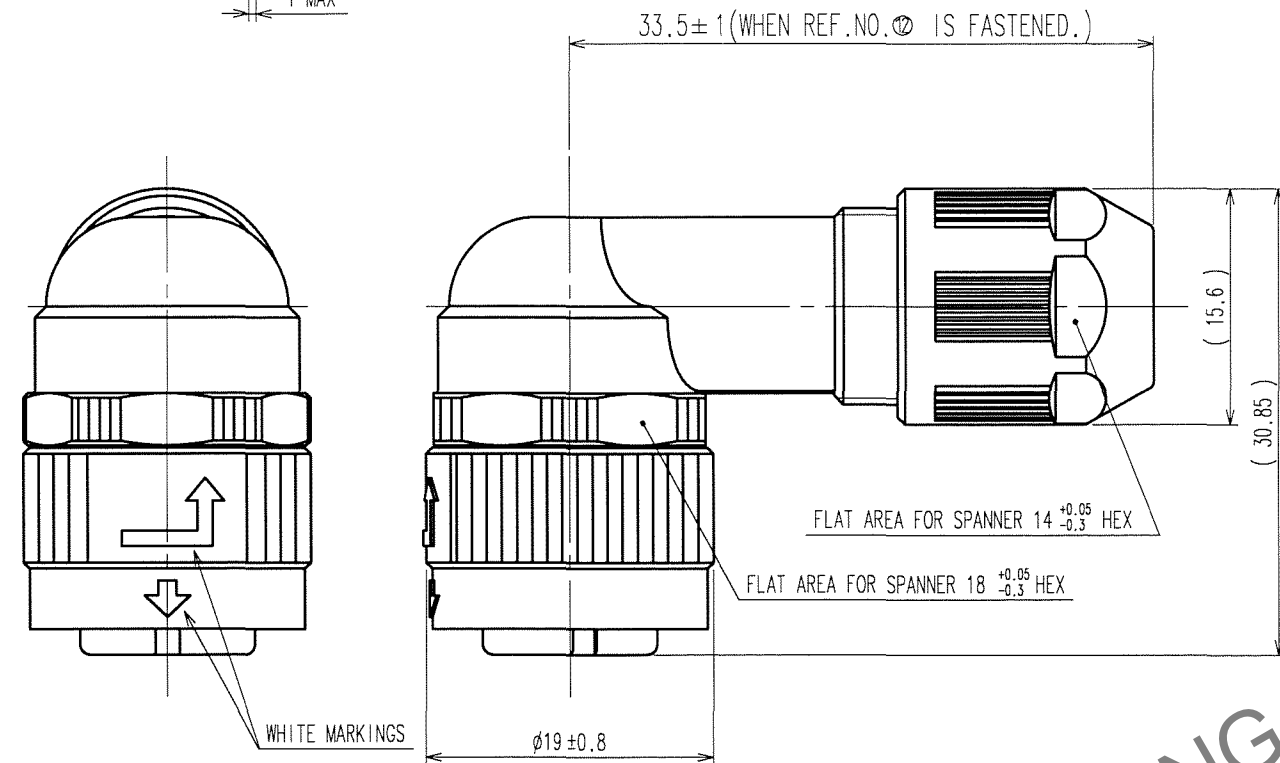
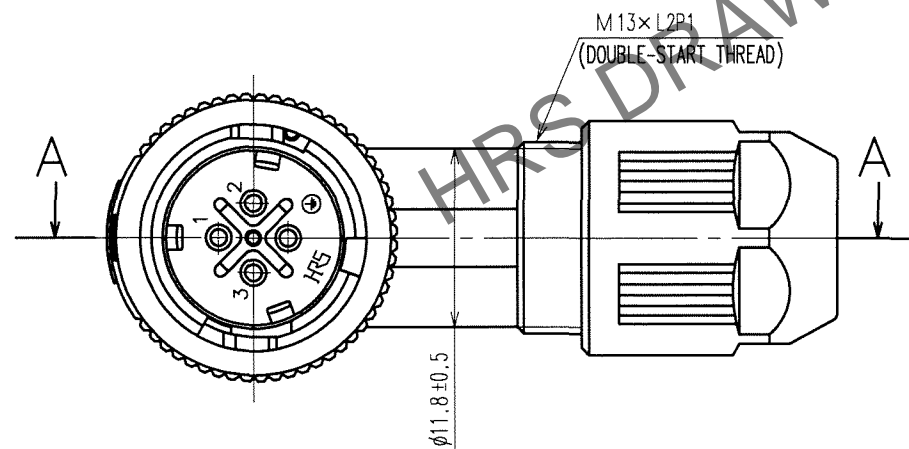


△ FIG. 1

Diagram illustrating the center of the connector and marking. The diagram shows a cross-section of a connector assembly with a central vertical axis. A horizontal arrow points to the center of the connector. A marking is indicated by a downward arrow. A dimension of 1 MAX is shown at the bottom.



MATING CONDITION (1:1)
(WHEN REF.NO.⑫ IS FASTENED)



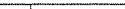

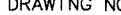
NOTES ① THE RECOMMENDED TIGHTENING TORQUE, ADHESIVE AND PRIMER FOR M16×0.75 PORTION OF REF NO. ④ AND ⑨ AND M13×L2P1 PORTION OF REF NO. ⑨ AND ⑫ ARE AS FOLLOWS. THE ADHESIVE AND PRIMER SHOULD BE ATTACHED ON THE MALE SCREW PORTION OF REF NO. ⑨.

TIGHTENING TORQUE: 0.9 TO 1 N·m.
ADHESIVE: LOCTITE 242 MADE BY HENKEL JAPAN LTD.
PRIMER: LOCK PRIMER 7649, MADE BY HENKEL JAPAN LTD.

- 2 ROTATION EXAMPLES ARE SHOWN FOR REF. NO. ④ AND ⑫.
3 CABLE CLAMP STRENGTH AND WATERPROOF PERFORMANCE DEPEND ON CABLE STRUCTURE
SUCH AS THE JACKET MATERIAL AND HARDNESS.
WE RECOMMEND CHECKING THE PERFORMANCE BEFORE THE USAGE.
4 CONDUIT IS NOT APPLICABLE TO THIS CONNECTOR.

NOTE 5 MAKE SURE THAT ➡ MARKING IS POSITIONED WITHIN 1 FROM THE CENTER OF CONNECTOR AS SHOWN IN FIG.1 WHEN MATED TO THE APPLICABLE RECEPTACLE, OTHERWISE, THE CONNECTORS ARE NOT COMPLETELY MATED, AND INSERT THIS PLUG TO THE RECEPTACLE TO THE END UNTIL THE ➡ MARKING IS LOCATED IN THE CENTER OF THE CONNECTOR.

| | | | | | |
|----------------------|------------------------------|----------------------------------|---------------------------------|---------------------------------|--------------------|
| CODE NO. (OLD) CL | DRAWN M. SATO 07.04.02 | DESIGNED H. ZENBA 07.04.07 | CHECKED K. EZAWA 07.04.09 | APPROVED M. SATO 07.04.09 | RELEASED . . |
|----------------------|------------------------------|----------------------------------|---------------------------------|---------------------------------|--------------------|

| | | | | |
|---|--|--|-----------------|--------------------------------|
|  SCALE 2 : 1 | DRAWING NO. | | PART NO. | |
| | EDC3-115283 | | HR34B-12WLPE-4S | |
| UNITS  |  HIROSE ELECTRIC CO., LTD | | CODE NO. | CL134-0035-0 <div>1/1</div> |