

Oct.1.2024 Copyright 2024 HIROSE ELECTRIC CO., LTD. All Rights Reserved.  
In case of consideration for using Automotive equipment / device which demand high reliability, kindly contact our sales window correspondents.

Fig. 2 (1:1)

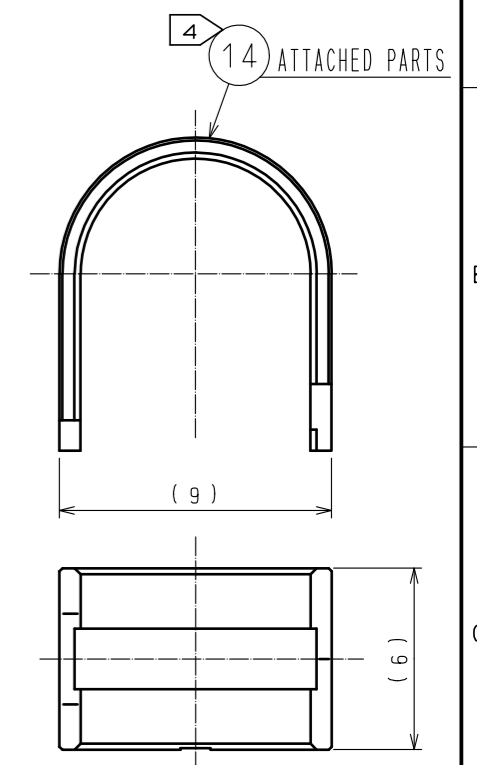
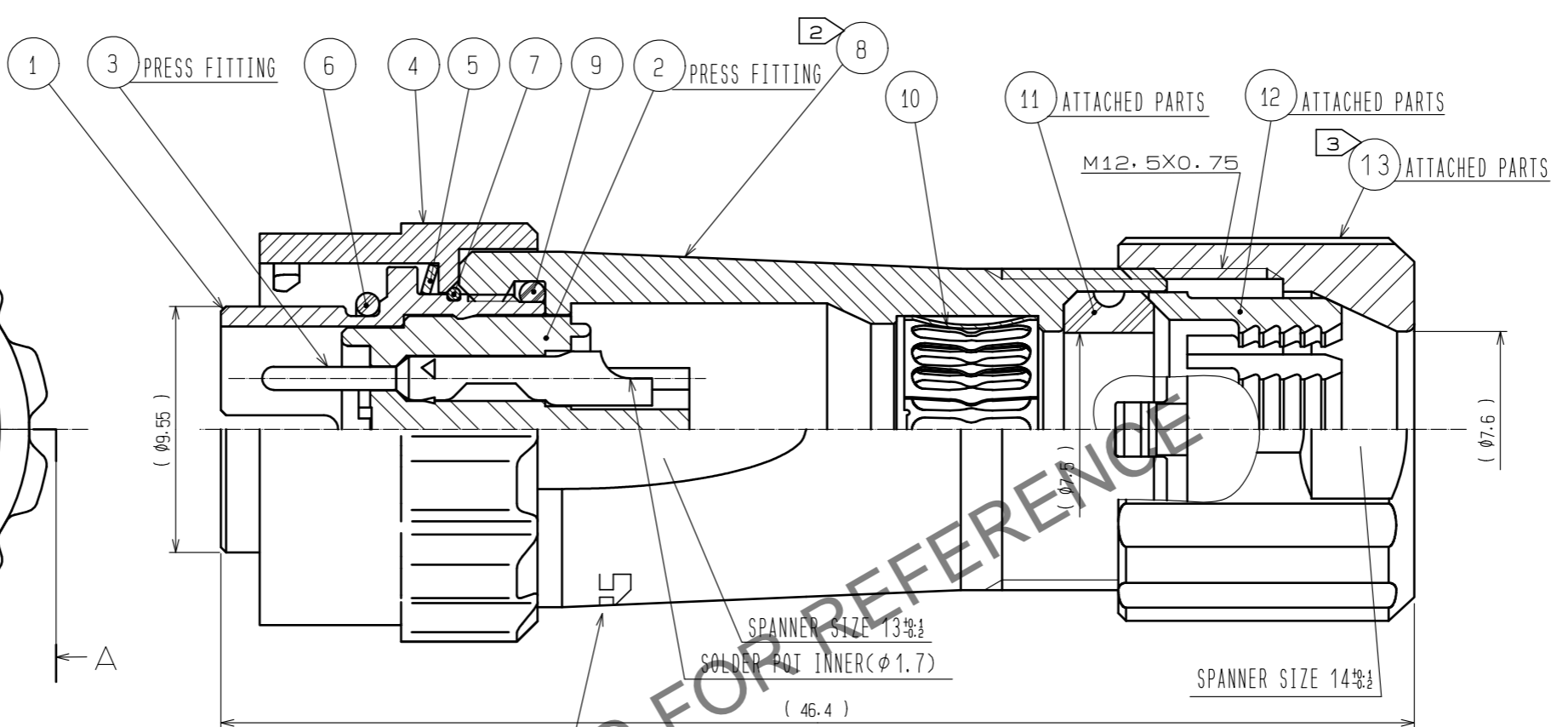
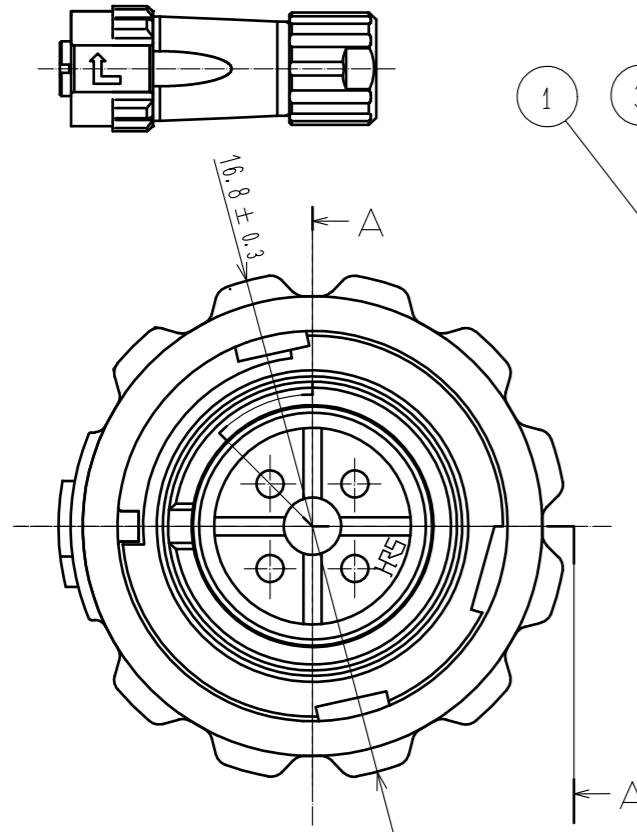
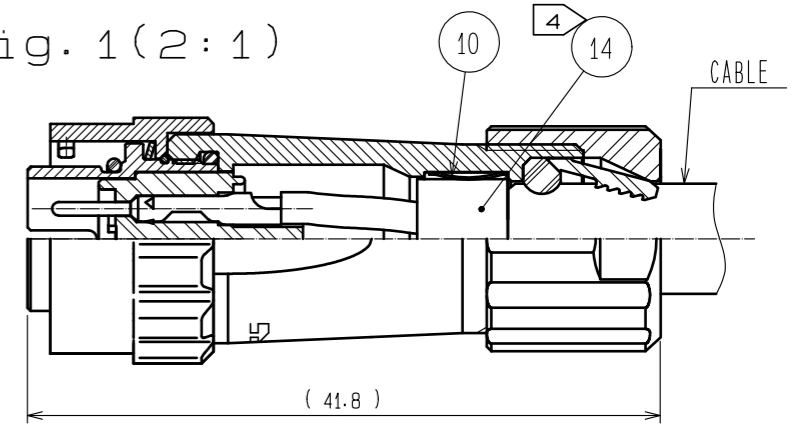


Fig. 1 (2:1)



- NOTES
- ① PLATING(REF.NO.③)  
CONTACT AREA : GOLD 0.2μm min.  
OTHERS : GOLD OR NICKEL  
UNDER PLATING : NICKEL 2μm min.
  - ⚠ ② THE RECOMMENDED CLAMP TORQUE OF REF.NO.⑧ TO BE 1 TO 1.5N·m.  
THREAD LOCKER TO THE THREADED PORTION OF REF.NO.① APPLIES TO PREVENT REF.NO.⑧ FROM LOOSING.  
RECOMMENDED THREAD LOCKER : LOCTITE 263 , HENKEL JAPAN LTD.
  - ⚠ ③ THE RECOMMENDED CLAMP TORQUE OF REF.NO.⑬ TO BE 0.8 TO 1N·m.  
THREAD LOCKER AND LOCK PRIMER TO THE THREADED PORTION M12.5X0.75 OF REF.NO.⑧ APPLIES TO PREVENT REF.NO.⑬ FROM LOOSING.  
RECOMMENDED THREAD LOCKER AND LOCK PRIMER : LOCTITE 263, LOCK PRIMER 7649, HENKEL JAPAN LTD.
  - ④ FASTEN REF.NO.⑭ TO THE CABLE WITH THE CABLE CRIMPING TOOL.  
AND MAKE REF.NO.⑭ CONTACT WITH REF.NO.⑩(REFER TO Fig.1).  
REFER TO THE TECHNICAL SPECIFICATION ETAD-C0099 FOR DETAILS.  
APPLICABLE CABLE CRIMPING TOOL : LF-TC-01 (CL150-0234-6)
  - ⑤ Fig.2 SHOWS THE APPEARANCE AFTER ASSEMBLY.
  - ⑥ APPLICABLE CABLE ASSEMBLY FIXTURE : LF10BP-T01 (CL150-0235-9)  
CABLE ASSEMBLY FIXTURE IS USED AS A RECEPTACLE STAND OF EXTRACT AND THE PART NUMBER ① OF AN ASSEMBLY.
  - ⑦ ROTATION EXAMPLES OF REF.④, ⑧ AND ⑬ TO ① ARE SHOWN.
  - ⑧ THE CABLE PULL, TWISTING STRENGTH, WATERPROOF ABILITY AND OTHER CHARACTERISTICS MAY DIFFER, DEPENDING ON THE CABLE STRUCTURE, PLEASE CONFIRM BEFORE THE USE.

7	STAINLESS STEEL		14	BRASS	NICKEL PLATING		
6	CHLOROPRENE RUBBER	(BLACK)	13	PPS	(NATURAL·BROWN) UL94V-0		
5	STAINLESS STEEL		12	POLYAMIDE	(NATURAL·MILKY WHITE) UL94V-0		
4	ZINC ALLOY	NICKEL PLATING	11	CHLOROPRENE RUBBER	(BLACK)		
3	COPPER ALLOY	①	10	PHOSPHOR BRONZE	NICKEL PLATING		
2	PPS	(BLACK) UL94V-0	9	CHLOROPRENE RUBBER	(BLACK)		
1	ZINC ALLOY	NICKEL PLATING	8	ZINC ALLOY	NICKEL PLATING		
NO.	MATERIAL	FINISH, REMARKS	NO.	MATERIAL	FINISH, REMARKS		
UNITS mm		SCALE 4:1	COUNT 2	DESCRIPTION OF REVISIONS DIS-C-00017016	DESIGNED HT. ZENBA	CHECKED EJ. KUNII	DATE 20240311
HIROSE ELECTRIC CO., LTD.		APPROVED	HY. KOBAYASHI	20180222	DRAWING NO. EDC-117070-31-00		
		CHECKED	HY. KOBAYASHI	20180222	PART NO. LF10WBPD-4P(31)		
		DESIGNED	TY. SUZUKI	20180221	CODE NO. CL0136-0017-1-31		
		DRAWN	HM. SAITO	20180219			