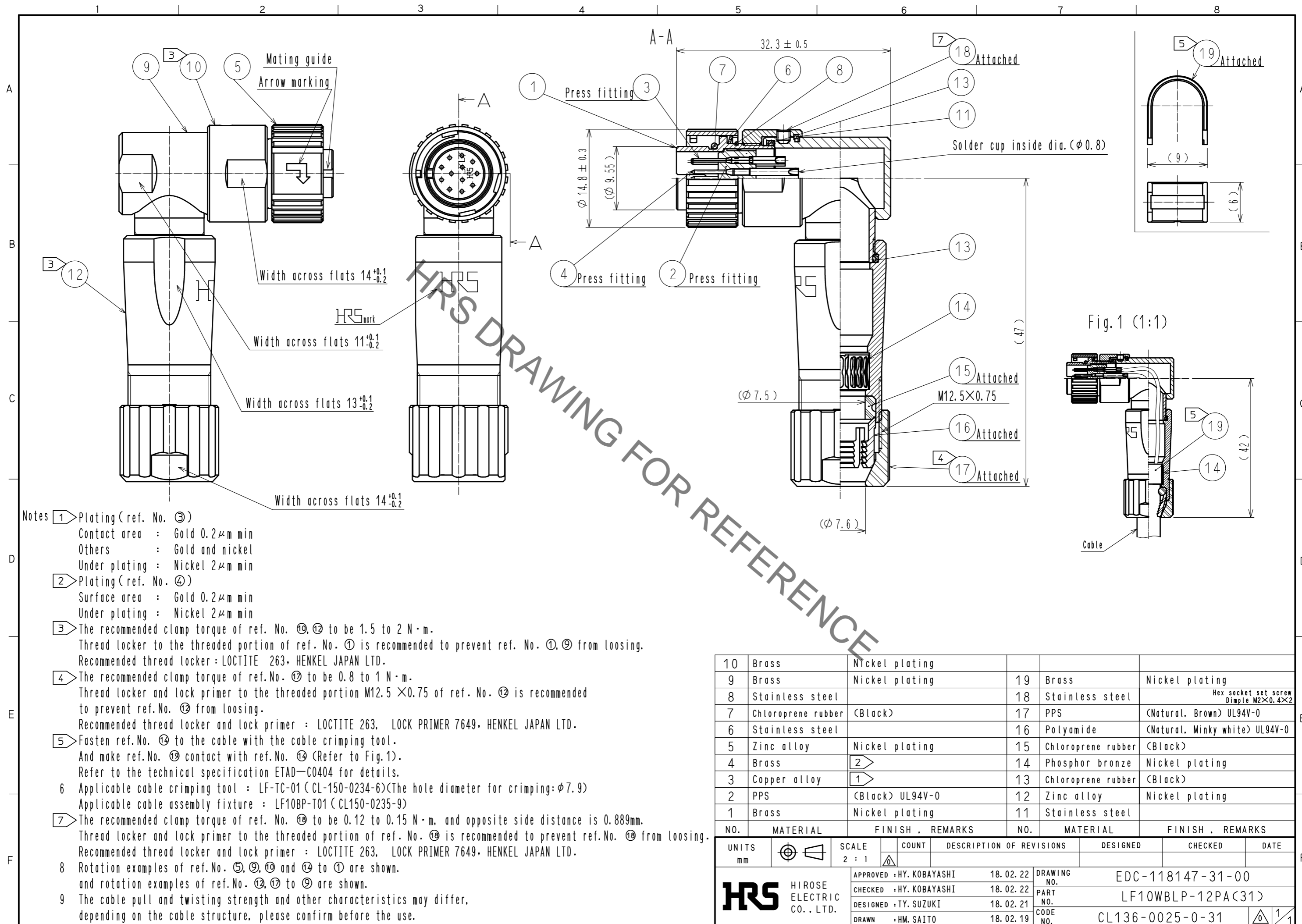


Aug.1.2022 Copyright 2022 HIROSE ELECTRIC CO., LTD. All Rights Reserved.
In case of consideration for using Automotive equipment / device which demand high reliability, kindly contact our sales window correspondents.



- Notes
- ① Plating (ref. No. ③)
Contact area : Gold 0.2μm min
Others : Gold and nickel
Under plating : Nickel 2μm min
 - ② Plating (ref. No. ④)
Surface area : Gold 0.2μm min
Under plating : Nickel 2μm min
 - ③ The recommended clamp torque of ref. No. ⑩, ⑫ to be 1.5 to 2 N·m.
Thread locker to the threaded portion of ref. No. ① is recommended to prevent ref. No. ①, ⑨ from loosening.
Recommended thread locker : LOCTITE 263, HENKEL JAPAN LTD.
 - ④ The recommended clamp torque of ref. No. ⑰ to be 0.8 to 1 N·m.
Thread locker and lock primer to the threaded portion M12.5 × 0.75 of ref. No. ⑫ is recommended to prevent ref. No. ⑫ from loosening.
Recommended thread locker and lock primer : LOCTITE 263, LOCK PRIMER 7649, HENKEL JAPAN LTD.
 - ⑤ Fasten ref. No. ⑭ to the cable with the cable crimping tool.
And make ref. No. ⑱ contact with ref. No. ⑭ (Refer to Fig.1).
Refer to the technical specification ETAD-C0404 for details.
 - ⑥ Applicable cable crimping tool : LF-TC-01 (CL-150-0234-6) (The hole diameter for crimping: φ7.9)
Applicable cable assembly fixture : LF10BP-T01 (CL150-0235-9)
 - ⑦ The recommended clamp torque of ref. No. ⑱ to be 0.12 to 0.15 N·m. and opposite side distance is 0.889mm.
Thread locker and lock primer to the threaded portion of ref. No. ⑱ is recommended to prevent ref. No. ⑱ from loosening.
Recommended thread locker and lock primer : LOCTITE 263, LOCK PRIMER 7649, HENKEL JAPAN LTD.
 - ⑧ Rotation examples of ref. No. ⑤, ⑨, ⑩ and ⑭ to ① are shown.
and rotation examples of ref. No. ⑫, ⑰ to ⑨ are shown.
 - ⑨ The cable pull and twisting strength and other characteristics may differ,
depending on the cable structure, please confirm before the use.

10	Brass	Nickel plating			
9	Brass	Nickel plating	19	Brass	Nickel plating
8	Stainless steel		18	Stainless steel	Hex socket set screw Dimple M2×0.4×2
7	Chloroprene rubber	(Black)	17	PPS	(Natural, Brown) UL94V-0
6	Stainless steel		16	Polyamide	(Natural, Minky white) UL94V-0
5	Zinc alloy	Nickel plating	15	Chloroprene rubber	(Black)
4	Brass	②	14	Phosphor bronze	Nickel plating
3	Copper alloy	①	13	Chloroprene rubber	(Black)
2	PPS	(Black) UL94V-0	12	Zinc alloy	Nickel plating
1	Brass	Nickel plating	11	Stainless steel	
NO.	MATERIAL	FINISH . REMARKS	NO.	MATERIAL	FINISH . REMARKS

UNITS	SCALE	COUNT	DESCRIPTION OF REVISIONS	DESIGNED	CHECKED	DATE
mm	2 : 1	△				
			APPROVED : HY. KOBAYASHI	18.02.22	DRAWING NO. EDC-118147-31-00	
			CHECKED : HY. KOBAYASHI	18.02.22	PART NO. LF10WBLP-12PA(31)	
			DESIGNED : TY. SUZUKI	18.02.21	CODE NO. CL136-0025-0-31	
			DRAWN : HM. SAITO	18.02.19	1/1	