

Oct.1.2024 Copyright 2024 HIROSE ELECTRIC CO., LTD. All Rights Reserved.
In case of consideration for using Automotive equipment / device which demand high reliability, kindly contact our sales window correspondents.

4 Fig. 2(1:1)

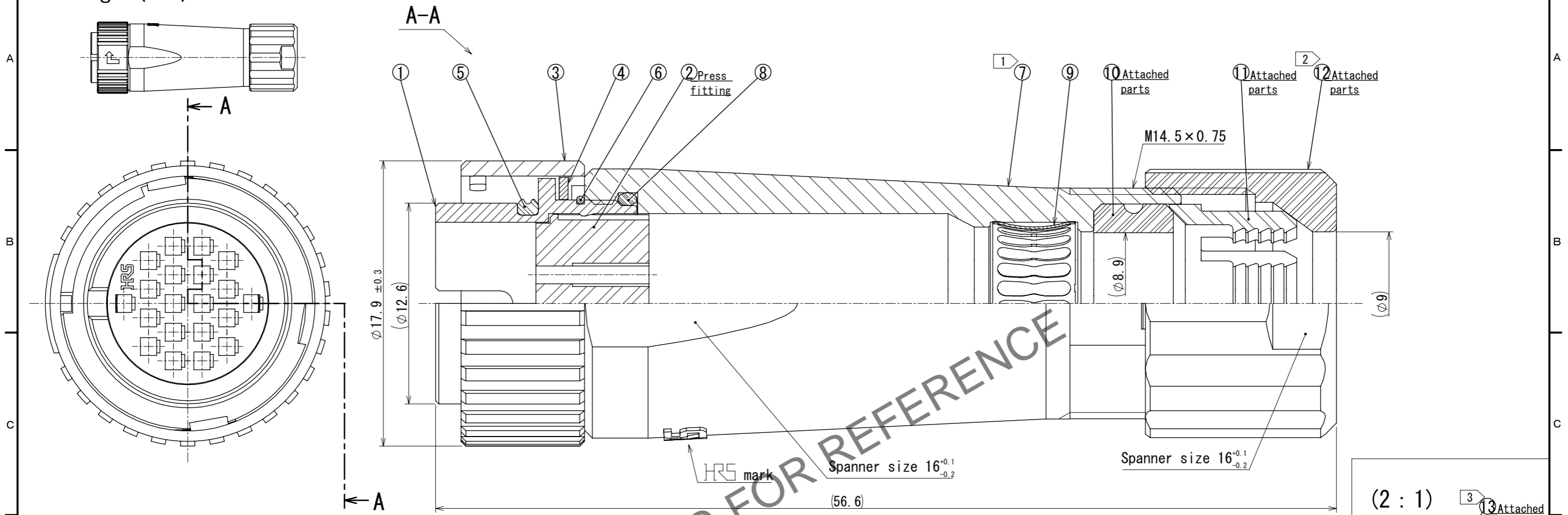
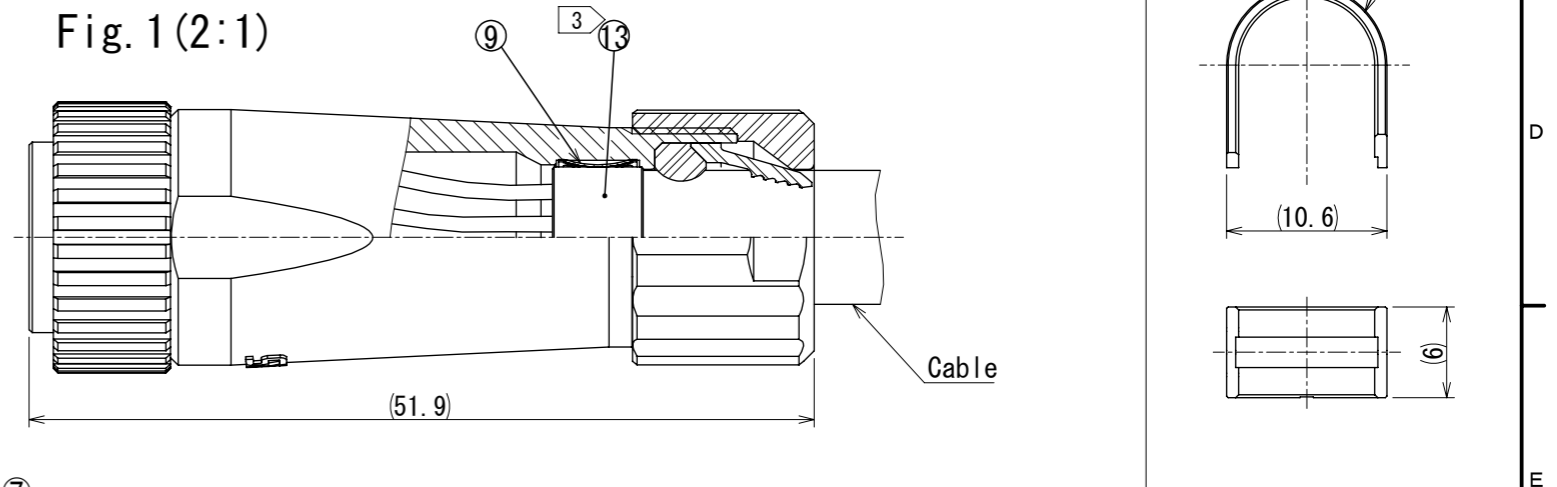


Fig. 1(2:1)



- Notes
- ① The recommended clamp torque of Ref. No. ⑦ is 1.5 to 2 N·m. Please be sure to apply thread locker to the threaded portion of Ref. No. ①. Recommended thread locker : LOCTITE 263, HENKEL JAPAN LTD.
 - ② The recommended clamp torque of Ref. No. ⑫ is 1 to 1.5 N·m. Please be sure to apply thread locker to the threaded portion M14.5×0.75 of Ref. No. ⑦. Recommended thread locker : LOCTITE 263, LOCK PRIMER 7649, HENKEL JAPAN LTD.
 - ③ Fasten Ref.No.⑬ to the cable crimpin tool. And make Ref.No.⑬ contact with Ref.No.⑨(refer to Fig.1). Refer it the technical specification ETAD-C0414 for details. Applicable cable crimping tool:LF-TC-01(CL150-0234-6)
 - ④ Fig.2 shows the appearance after assembly.
 - ⑤ Applicable cableassembly fixture : LF13BP-T01 (CL150-0237-4) Cable assembly fixture is used as a receptacle stand of extract and the part number ① of an assembly.
 - ⑥ Rotation examples of Ref. ③, ⑦ and ⑫ to ① are shown.
 - ⑦ The cable retention strength, twisting strength, waterproof tightness, and other characteristics, may differ depending on the cable structure. Please confirm before use.
 - ⑧ Applicable crimp contact:HR10-PC-211(CL110-0516-9) Applicable cable size:26 to 30 AWG, Insulation outer diameter φ 1 MAX. Applicable extractor:RP6-SC-TP (CL150-0039-0)

7	Zinc alloy	Nickel plating					
6	Stainless steel		13	Brass	Nickel plating		
5	Chloroprene rubber	(Black)	12	Polyphenylene sulfide	(Natural, Brawn) UL94V-0		
4	Stainless steel		11	Polyamide	(Natural, Milky white) UL94V-0		
3	Zinc alloy	Nickel plating	10	Chloroprene rubber	(Black)		
2	Polyphenylene sulfide	(Black) UL94V-0	9	Phosphor bronze	Nickel plating		
1	Zinc alloy	Nickel plating	8	Chloroprene rubber	(Black)		
NO.	MATERIAL	FINISH	REMARKS	NO.	MATERIAL	FINISH	REMARKS

UNITS		SCALE	COUNT	DESCRIPTION OF REVISIONS	DESIGNED	CHECKED	DATE
mm		4:1					2023.09.14
APPROVED : TP. KOMATSU 2024.01.11				DRAWING NO. EDC-380041-00-00			
CHECKED : KI. NAGANUMA 2024.01.11				PART NO. LF13WBP-20PC			
DESIGNED : YJ. KOGA 2024.01.11				CODE NO. CL0136-0040-0-00			
DRAWN : KR. SUZUKI 2024.01.11							