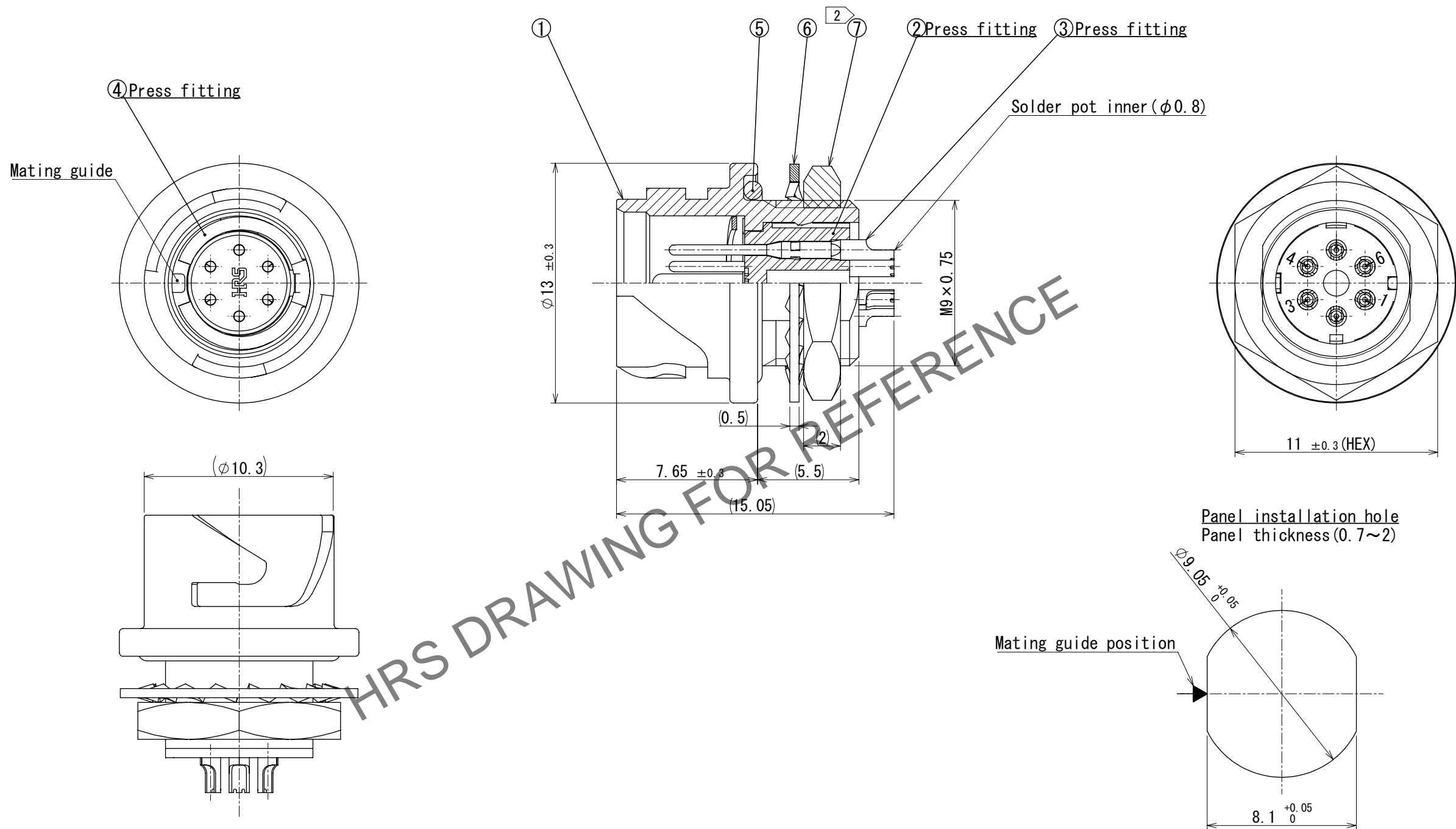


Jun.1.2024 Copyright 2024 HIROSE ELECTRIC CO., LTD. All Rights Reserved.  
In case of consideration for using Automotive equipment / device which demand high reliability, kindly contact our sales window correspondents.



- Notes
- ① Plating (Ref. No. ③)  
Contact area : Gold 0.2 μm min.  
Others : Gold and nickel  
Under plating: Nickel 2 μm min.
  - ② The recommended clamp torque of Ref. No. ⑦ to be 1.5 to 2N · m.  
Thread locker to the threaded portion of Ref. No. ① is recommended to prevent Ref. No. ⑦ from loosening.  
Recommended thread locker: Loctite 263, Henkel Japan Ltd.
  - 3 When this connector is mounted on to panel, be careful Ref. No. ⑤ is assembled surely into the groove of Ref. No. ① as shown in this figure to keep waterproof effectiveness.

△ CAD change

4	Phosphor bronze	Nickel plating			
3	Copper alloy	①	7	Steel	Nickel plating
2	Polyphenylene sulfide	(Black) UL94V-0	6	Steel	Nickel plating
1	Zinc alloy	Nickel plating	5	Chloroprene rubber	(Black)
NO.	MATERIAL	FINISH , REMARKS	NO.	MATERIAL	FINISH , REMARKS
UNITS mm					
SCALE 4:1		COUNT 2	DESCRIPTION OF REVISIONS DIS-C-00016031		DESIGNED Y.J. KOGA
APPROVED : MR. YOSHIDA		2005. 01. 05	DRAWING NO. EDC-113836-00-00		
CHECKED : MO. SATOH		2005. 01. 05	PART NO. LF07WBR-6P		
DESIGNED : YH. YAMADA		2005. 01. 05	CODE NO. CL0136-1001-7-00		
DRAWN : YH. YAMADA		2005. 01. 05			