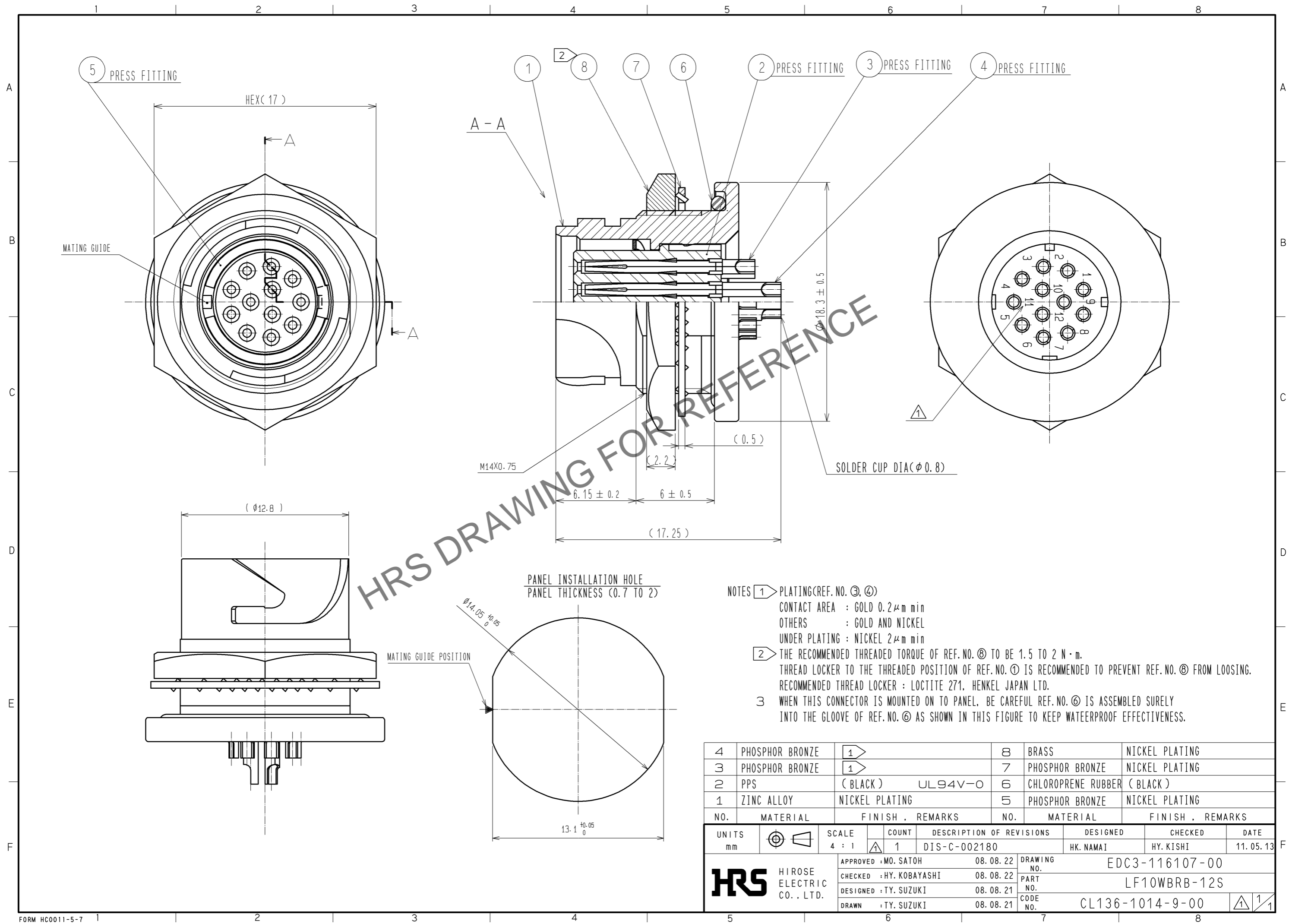


Mar.1.2025 Copyright 2025 HIROSE ELECTRIC CO., LTD. All Rights Reserved.
In case of consideration for using Automotive equipment / device which demand high reliability, kindly contact our sales window correspondents.



HRS DRAWING FOR REFERENCE

- NOTES
- PLATING(REF. NO. ③ ④)
CONTACT AREA : GOLD $0.2 \mu\text{m}$ min
OTHERS : GOLD AND NICKEL
UNDER PLATING : NICKEL $2 \mu\text{m}$ min
 - THE RECOMMENDED THREADED TORQUE OF REF. NO. ⑧ TO BE 1.5 TO 2 N·m.
THREAD LOCKER TO THE THREADED POSITION OF REF. NO. ① IS RECOMMENDED TO PREVENT REF. NO. ⑧ FROM LOSING.
RECOMMENDED THREAD LOCKER : LOCTITE 271, HENKEL JAPAN LTD.
 - WHEN THIS CONNECTOR IS MOUNTED ON TO PANEL, BE CAREFUL REF. NO. ⑥ IS ASSEMBLED SURELY INTO THE GLOOVE OF REF. NO. ⑥ AS SHOWN IN THIS FIGURE TO KEEP WATERPROOF EFFECTIVENESS.

NO.	MATERIAL	FINISH	REMARKS	NO.	MATERIAL	FINISH	REMARKS
4	PHOSPHOR BRONZE	①		8	BRASS	NICKEL PLATING	
3	PHOSPHOR BRONZE	①		7	PHOSPHOR BRONZE	NICKEL PLATING	
2	PPS	(BLACK)	UL94V-0	6	CHLOROPRENE RUBBER	(BLACK)	
1	ZINC ALLOY	NICKEL PLATING		5	PHOSPHOR BRONZE	NICKEL PLATING	

UNITS	SCALE	COUNT	DESCRIPTION OF REVISIONS	DESIGNED	CHECKED	DATE
mm	4 : 1	1	DIS-C-002180	HK. NAMAI	HY. KISHI	11.05.13

APPROVED	DATE	DRAWING NO.
MO. SATOH	08.08.22	EDC3-116107-00
CHECKED	DATE	PART NO.
HY. KOBAYASHI	08.08.22	LF10WBRB-12S
DESIGNED	DATE	CODE NO.
TY. SUZUKI	08.08.21	CL136-1014-9-00
DRAWN	DATE	
TY. SUZUKI	08.08.21	