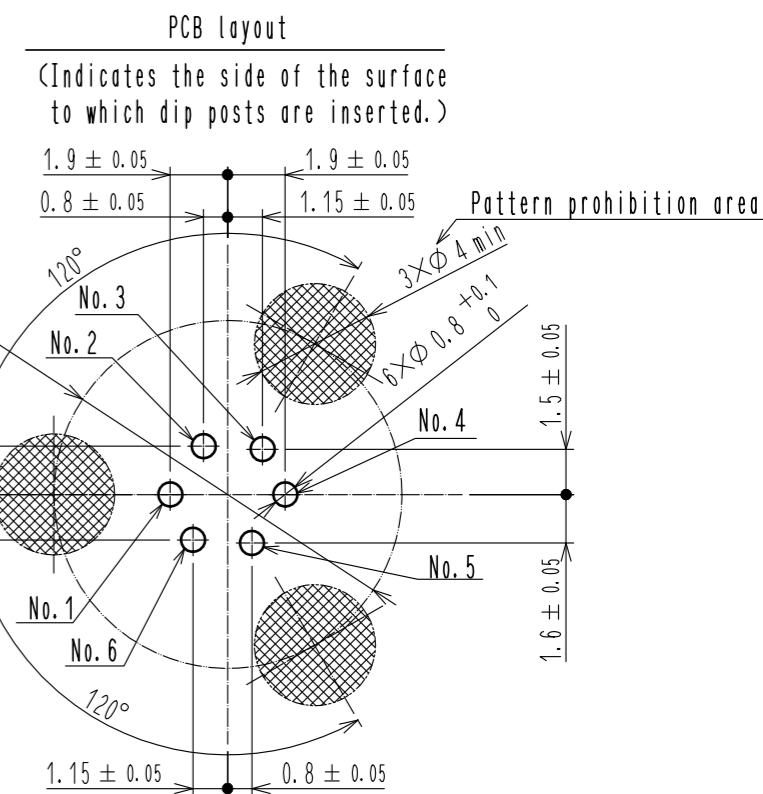
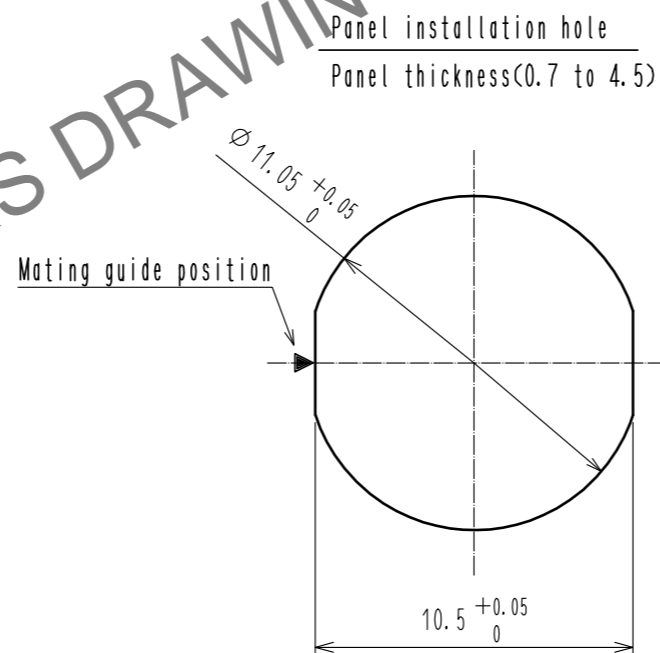
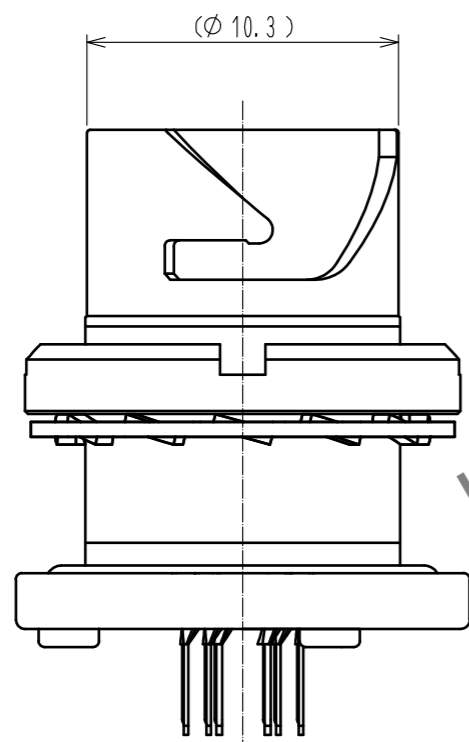
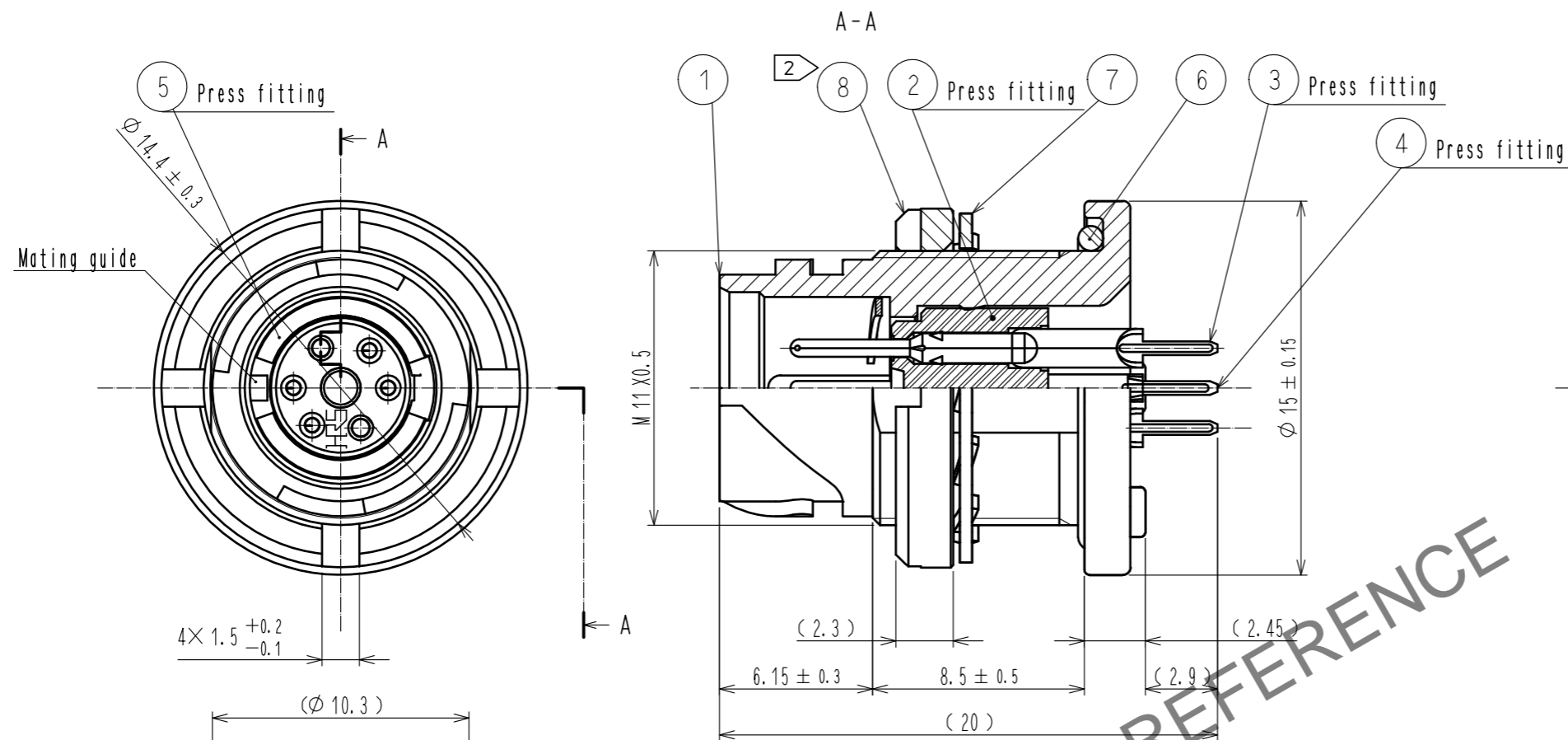


Oct.1.2024 Copyright 2024 HIROSE ELECTRIC CO., LTD. All Rights Reserved.  
In case of consideration for using Automotive equipment / device which demand high reliability, kindly contact our sales window correspondents.

1 2 3 4 5 6 7 8

A  
B  
C  
D  
E  
F

A  
B  
C  
D  
E  
F



- NOTES
- ① Plating (Ref.No. ③, ④)  
Contact area : Gold 0.2 μm min  
Others : Gold flash  
Under Plating : Nickel 2 μm min
  - ② The recommended clamp torque of Ref.No. ⑧ to be 1.5 to 2N·m.  
Thread locker to the threaded portion of Ref.No. ① is recommended to prevent Ref.No. ⑧ from loosening. Recommended thread locker:LOCTITE 263,HENKEL JAPAN LTD.
  - ③ When this connector is mounted on to panel, be careful Ref.No. ⑥ is assembled surely into the groove of Ref.No. ① as shown in this figure to keep waterproof effectiveness.
  - ④ Rotation examples of No. ③ and ④ to ① are shown.

NO.	MATERIAL	FINISH	REMARKS	NO.	MATERIAL	FINISH	REMARKS
4	Copper alloy	①		8	Brass	Nickel plating	
3	Copper alloy	①		7	Phosphor bronze	Nickel plating	
2	PPS	(Black)	UL94V-0	6	Chloroprene rubber	(Black)	
1	Zinc alloy	Nickel plating		5	Phosphor bronze	Nickel plating	

UNITS	SCALE	COUNT	DESCRIPTION OF REVISIONS	DESIGNED	CHECKED	DATE
mm	4 : 1	△				

APPROVED	18.03.13	DRAWING NO.	EDC-119203-31-00
HY. KOBAYASHI		PART NO.	LF07WBRB-6PD-A(31)
TY. SUZUKI		CODE NO.	CL136-1021-0-31
TY. SUZUKI			

FORM HC0011-5-7 1 2 3 4 5 6 7 8