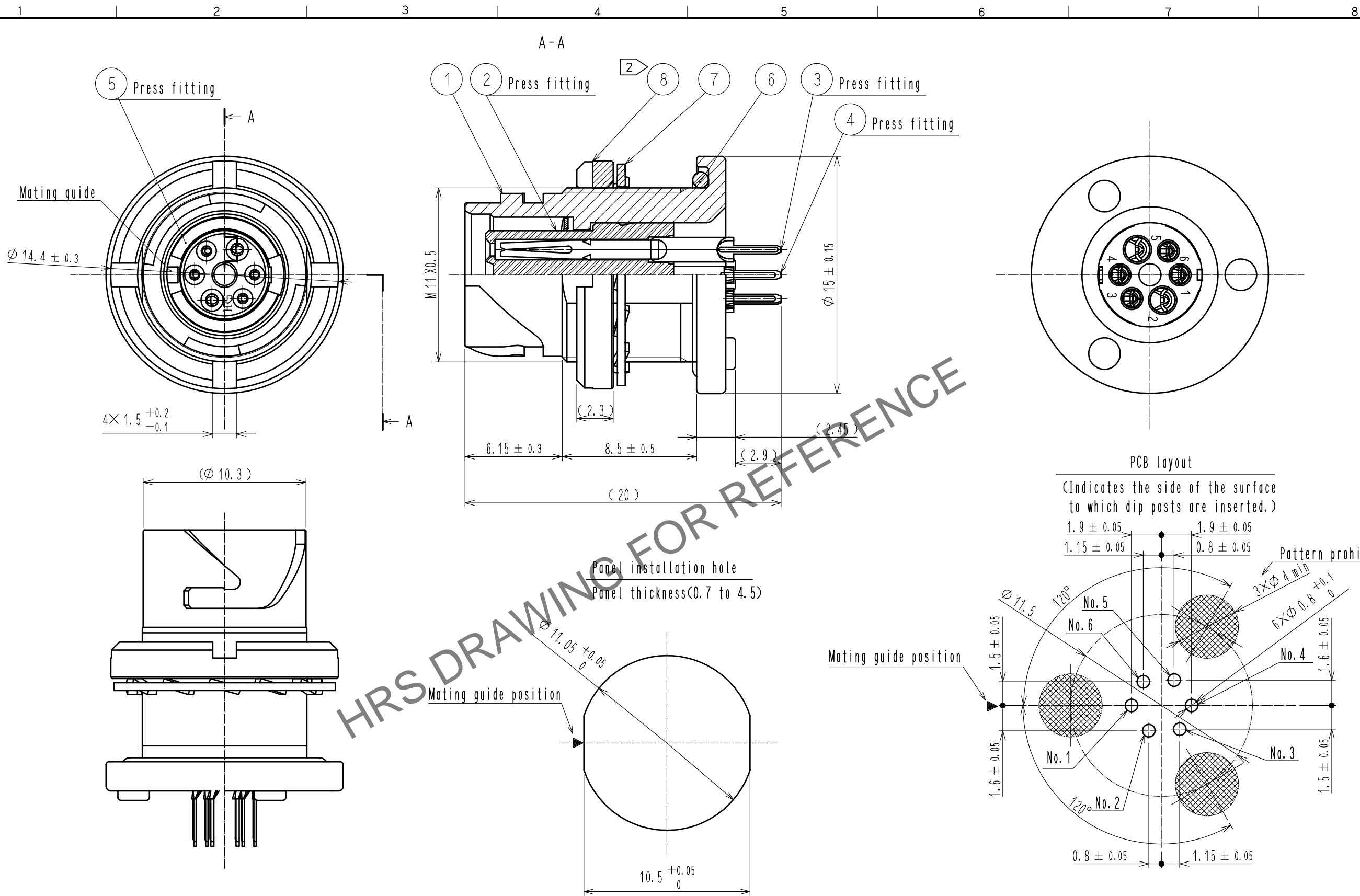


May.1.2024 Copyright 2024 HIROSE ELECTRIC CO., LTD. All Rights Reserved.
In case of consideration for using Automotive equipment / device which demand high reliability, kindly contact our sales window correspondents.



- NOTES
- Plating (Ref.No. ③, ④)
Contact area : Gold $0.2 \mu\text{m}$ min
Others : Gold flash
Under Plating : Nickel $2 \mu\text{m}$ min
 - The recommended clamp torque of Ref.No. ⑧ to be 1.5 to $2 \text{N} \cdot \text{m}$.
Thread locker to the threaded portion of Ref.No. ① is recommended to prevent Ref.No. ⑧ from loosening. Recommended thread locker: LOCTITE 263, HENKEL JAPAN LTD.
 - When this connector is mounted on to panel, be careful Ref.No. ⑥ is assembled surely into the groove of Ref.No. ① as shown in this figure to keep waterproof effectiveness.
 - Rotation examples of No. ③ and ④ to ① are shown.

4	Phosphor bronze	1	8	Brass	Nickel plating
3	Copper alloy	1	7	Phosphor bronze	Nickel plating
2	PPS	(Black) UL94V-0	6	Chloroprene rubber	(Black)
1	Zinc alloy	Nickel plating	5	Phosphor bronze	Nickel plating
NO.	MATERIAL	FINISH . REMARKS	NO.	MATERIAL	FINISH . REMARKS
UNITS mm		SCALE 4 : 1	COUNT 	DESCRIPTION OF REVISIONS	DESIGNED CHECKED DATE
HIROSE ELECTRIC CO., LTD.		APPROVED : HY. KOBAYASHI	18.02.22	DRAWING NO.	EDC-119204-31-00
		CHECKED : HY. KOBAYASHI	18.02.22	PART NO.	LF07WBRB-6SD-A(31)
		DESIGNED : TY. SUZUKI	18.02.22	CODE NO.	CL136-1022-0-31
		DRAWN : HM. SAITO	18.02.20		