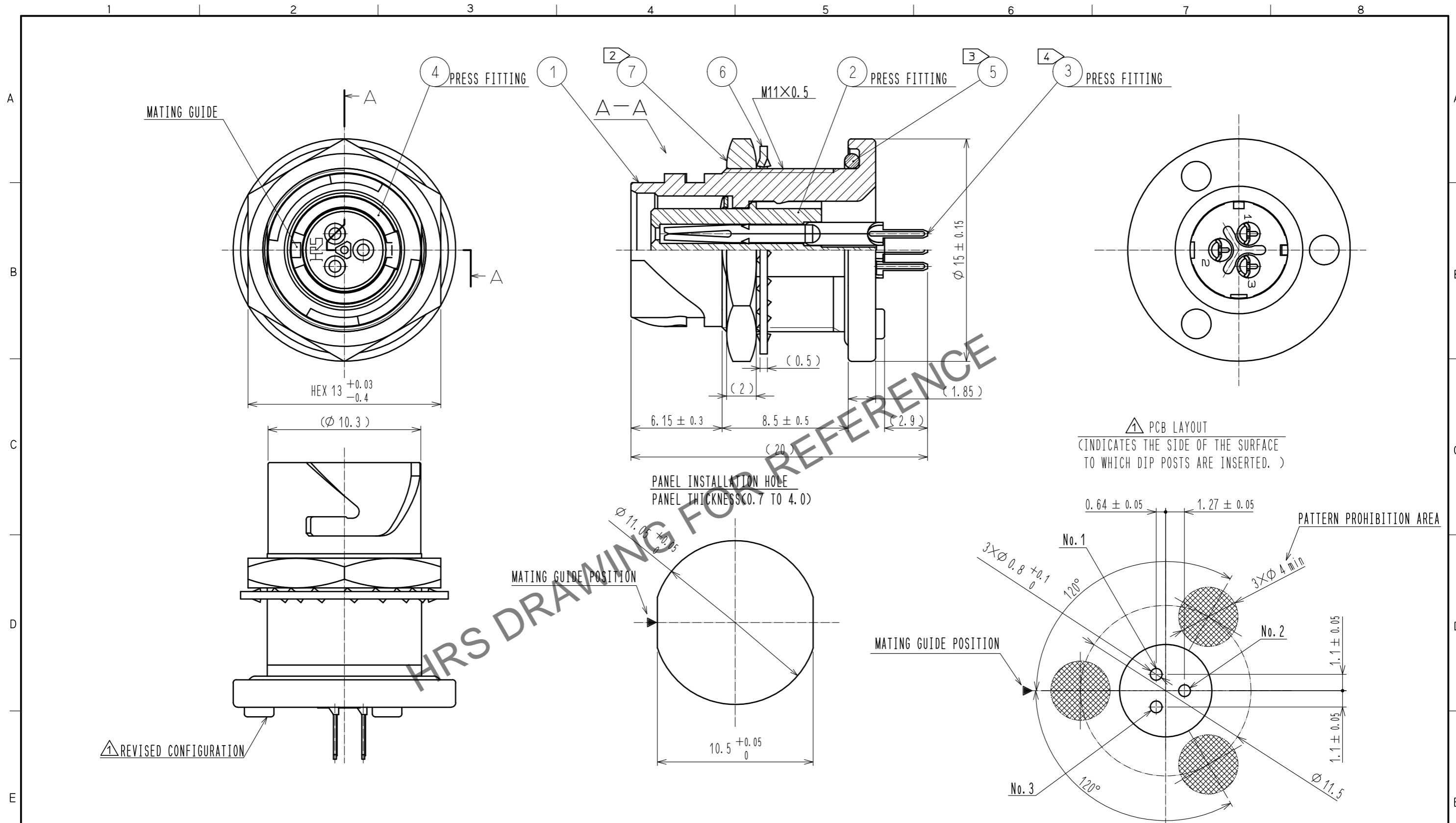


Oct.1.2024 Copyright 2024 HIROSE ELECTRIC CO., LTD. All Rights Reserved.
In case of consideration for using Automotive equipment / device which demand high reliability, kindly contact our sales window correspondents.



- NOTES**
- PLATING(REF. NO. ③)
CONTACT AREA :GOLD 0.2 μ m min.
DIP AREA :GOLD 0.03 μ m min.
UNDER PLATING:NICKEL PLATING 2 μ m min.
 - THE RECOMMENDED CLAMP TORQUE OF REF. NO. ⑦ TO BE 1.5 TO 2 N · m.
THREAD LOCKER TO THREADED PORTION OF REF. NO. ① IS RECOMMENDED TO PREVENT REF. NO. ⑦ FROM LOOSING.
RECOMMENDED THREAD LOCKER:LOCTITE 263 , HENKEL JAPAN LTD.
 - WHEN THIS CONNECTOR IS MOUNTED ON TO PANEL,BE CAREFUL REF. NO. ⑤ IS ASSEMBLED SURELY INTO THE GROOVE OF REF. NO. ⑤ AS SHOWN IN THIS FIGURE TO KEEP WATERPROOF EFFECTIVENESS.
 - ROTATION EXAMPLE OF REF. NO. ③ ARE SHOWN.

NO.	MATERIAL	FINISH .	REMARKS	NO.	MATERIAL	FINISH .	REMARKS
4	PHOSPHOR BRONZE	NICKEL PLATING		7	BRASS	NICKEL PLATING	
3	COPPER ALLOY	①		6	PHOSPHOR BRONZE	NICKEL PLATING	
2	POLYPHENYLENE SULFIDE	(BLACK)	UL94V-0	5	CHLOROPRENE RUBBER	(BLACK)	
1	ZINC ALLOY	NICKEL PLATING					

UNITS	SCALE	COUNT	DESCRIPTION OF REVISIONS	DESIGNED	CHECKED	DATE
mm	4 : 1	2	DIS-C-00002307	SY. KONDO	EJ. KUNII	18.06.20

APPROVED	CHECKED	DESIGNED	DRAWN	DRAWING NO.	PART NO.	CODE NO.
HY. KOBAYASHI	HY. KOBAYASHI	TY. SUZUKI	HM. SAITO	EDC-119579-31-00	LF07WBRB-3SD(31)	CL136-1025-0-31