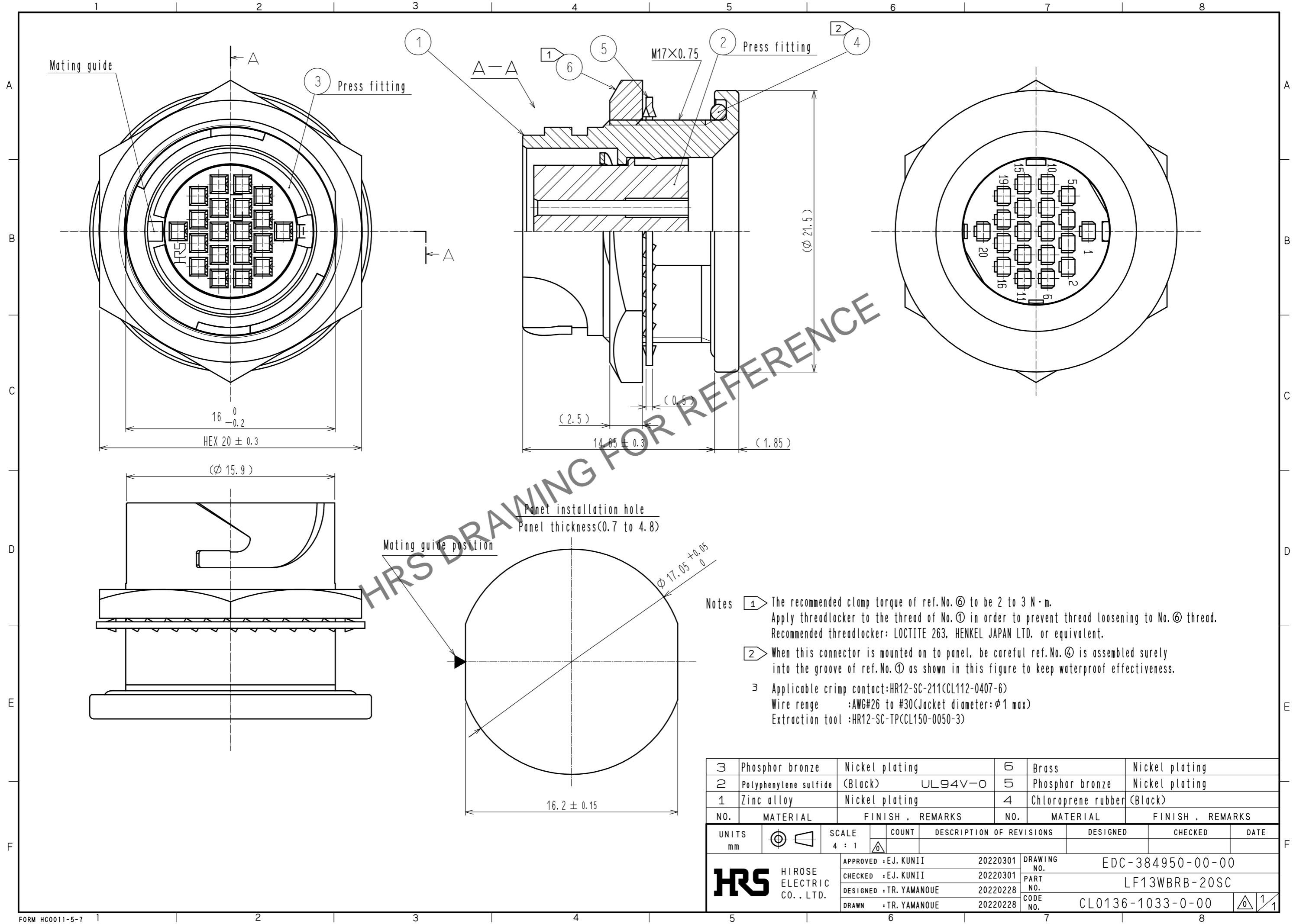


Oct.1.2024 Copyright 2024 HIROSE ELECTRIC CO., LTD. All Rights Reserved.
In case of consideration for using Automotive equipment / device which demand high reliability, kindly contact our sales window correspondents.



- Notes
- ① The recommended clamp torque of ref.No.⑥ to be 2 to 3 N·m.
Apply threadlocker to the thread of No.① in order to prevent thread loosening to No.⑥ thread.
Recommended threadlocker: LOCTITE 263, HENKEL JAPAN LTD. or equivalent.
 - ② When this connector is mounted on to panel, be careful ref.No.④ is assembled surely into the groove of ref.No.① as shown in this figure to keep waterproof effectiveness.
 - ③ Applicable crimp contact:HR12-SC-211(CL112-0407-6)
Wire range :AWG#26 to #30(Jacket diameter:φ1 max)
Extraction tool :HR12-SC-TP(CL150-0050-3)

3	Phosphor bronze	Nickel plating	6	Brass	Nickel plating
2	Polyphenylene sulfide	(Black) UL94V-0	5	Phosphor bronze	Nickel plating
1	Zinc alloy	Nickel plating	4	Chloroprene rubber	(Black)
NO.	MATERIAL	FINISH . REMARKS	NO.	MATERIAL	FINISH . REMARKS

UNITS		SCALE	COUNT	DESCRIPTION OF REVISIONS	DESIGNED	CHECKED	DATE
mm		4 : 1	△				
HRS HIROSE ELECTRIC CO., LTD.		APPROVED :EJ. KUNII	20220301	DRAWING NO. EDC-384950-00-00			
		CHECKED :EJ. KUNII	20220301	PART NO. LF13WBRB-20SC			
		DESIGNED :TR. YAMANOUE	20220228	CODE NO. CL0136-1033-0-00			
		DRAWN :TR. YAMANOUE	20220228			1/1	