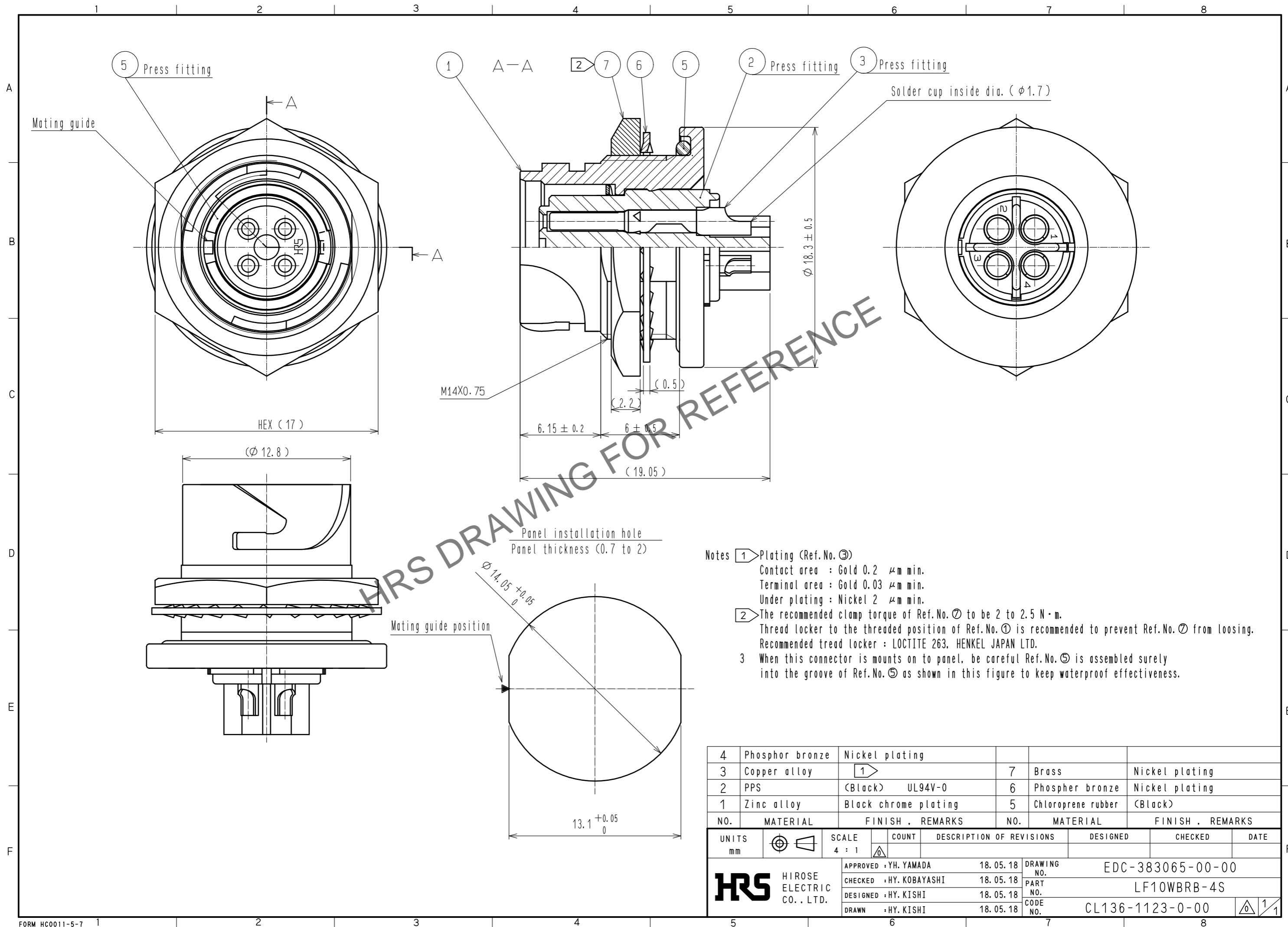


Oct.1.2024 Copyright 2024 HIROSE ELECTRIC CO., LTD. All Rights Reserved.  
In case of consideration for using Automotive equipment / device which demand high reliability, kindly contact our sales window correspondents.



- Notes
- ① Plating (Ref.No. ③)  
Contact area : Gold 0.2 μm min.  
Terminal area : Gold 0.03 μm min.  
Under plating : Nickel 2 μm min.
  - ② The recommended clamp torque of Ref.No. ⑦ to be 2 to 2.5 N·m.  
Thread locker to the threaded position of Ref.No. ① is recommended to prevent Ref.No. ⑦ from loosening.  
Recommended thread locker : LOCTITE 263, HENKEL JAPAN LTD.
  - ③ When this connector is mounts on to panel, be careful Ref.No. ⑤ is assembled surely into the groove of Ref.No. ⑤ as shown in this figure to keep waterproof effectiveness.

4	Phosphor bronze	Nickel plating						
3	Copper alloy	①	7	Brass	Nickel plating			
2	PPS	(Black) UL94V-0	6	Phosphor bronze	Nickel plating			
1	Zinc alloy	Black chrome plating	5	Chloroprene rubber	(Black)			
NO.	MATERIAL	FINISH . REMARKS	NO.	MATERIAL	FINISH . REMARKS			
UNITS	mm	SCALE	4 : 1	COUNT	DESCRIPTION OF REVISIONS	DESIGNED	CHECKED	DATE
<b>HRS</b> HIROSE ELECTRIC CO., LTD.		APPROVED	: YH. YAMADA	18. 05. 18	DRAWING NO.	EDC-383065-00-00		
		CHECKED	: HY. KOBAYASHI	18. 05. 18	PART NO.	LF10WBRB-4S		
		DESIGNED	: HY. KISHI	18. 05. 18	CODE NO.	CL136-1123-0-00		
		DRAWN	: HY. KISHI	18. 05. 18				