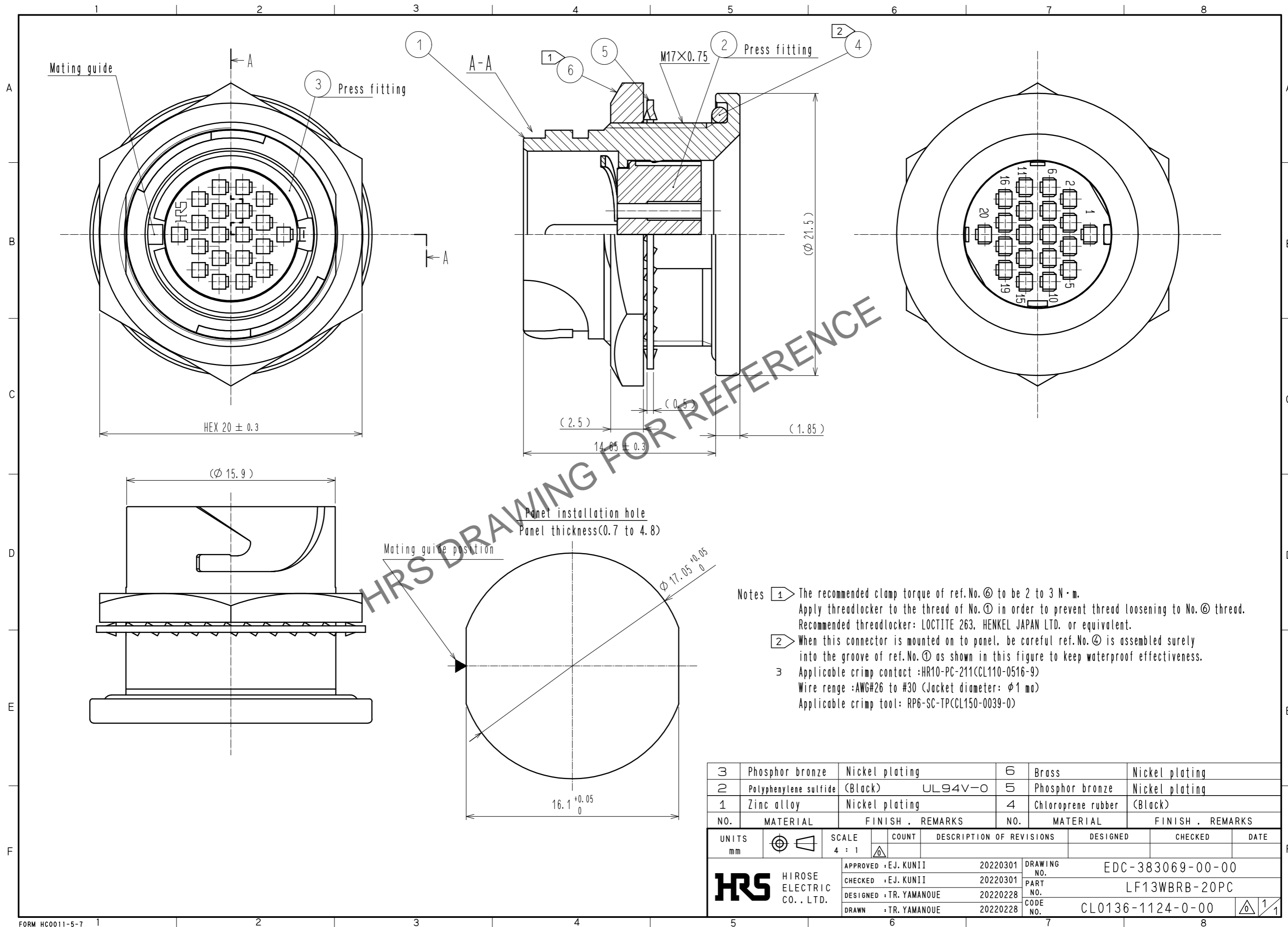


Oct.1.2024 Copyright 2024 HIROSE ELECTRIC CO., LTD. All Rights Reserved.  
 In case of consideration for using Automotive equipment / device which demand high reliability, kindly contact our sales window correspondents.



HRS DRAWING FOR REFERENCE

- Notes
- ① The recommended clamp torque of ref.No.⑥ to be 2 to 3 N·m.  
 Apply threadlocker to the thread of No.① in order to prevent thread loosening to No.⑥ thread.  
 Recommended threadlocker: LOCTITE 263, HENKEL JAPAN LTD. or equivalent.
  - ② When this connector is mounted on to panel, be careful ref.No.④ is assembled surely into the groove of ref.No.① as shown in this figure to keep waterproof effectiveness.
  - ③ Applicable crimp contact :HR10-PC-211(CL110-0516-9)  
 Wire range :AWG#26 to #30 (Jacket diameter: φ1 mm)  
 Applicable crimp tool: RP6-SC-TP(CL150-0039-0)

3	Phosphor bronze	Nickel plating	6	Brass	Nickel plating
2	Polyphenylene sulfide	(Black) UL94V-0	5	Phosphor bronze	Nickel plating
1	Zinc alloy	Nickel plating	4	Chloroprene rubber	(Black)
NO.	MATERIAL	FINISH . REMARKS	NO.	MATERIAL	FINISH . REMARKS

UNITS		SCALE	COUNT	DESCRIPTION OF REVISIONS	DESIGNED	CHECKED	DATE
mm		4 : 1					
HIROSE ELECTRIC CO., LTD.				APPROVED :EJ. KUNII 20220301 CHECKED :EJ. KUNII 20220301 DESIGNED :TR. YAMANOUE 20220228 DRAWN :TR. YAMANOUE 20220228	DRAWING NO. EDC-383069-00-00 PART NO. LF13WBRB-20PC CODE NO. CL0136-1124-0-00	1/1	