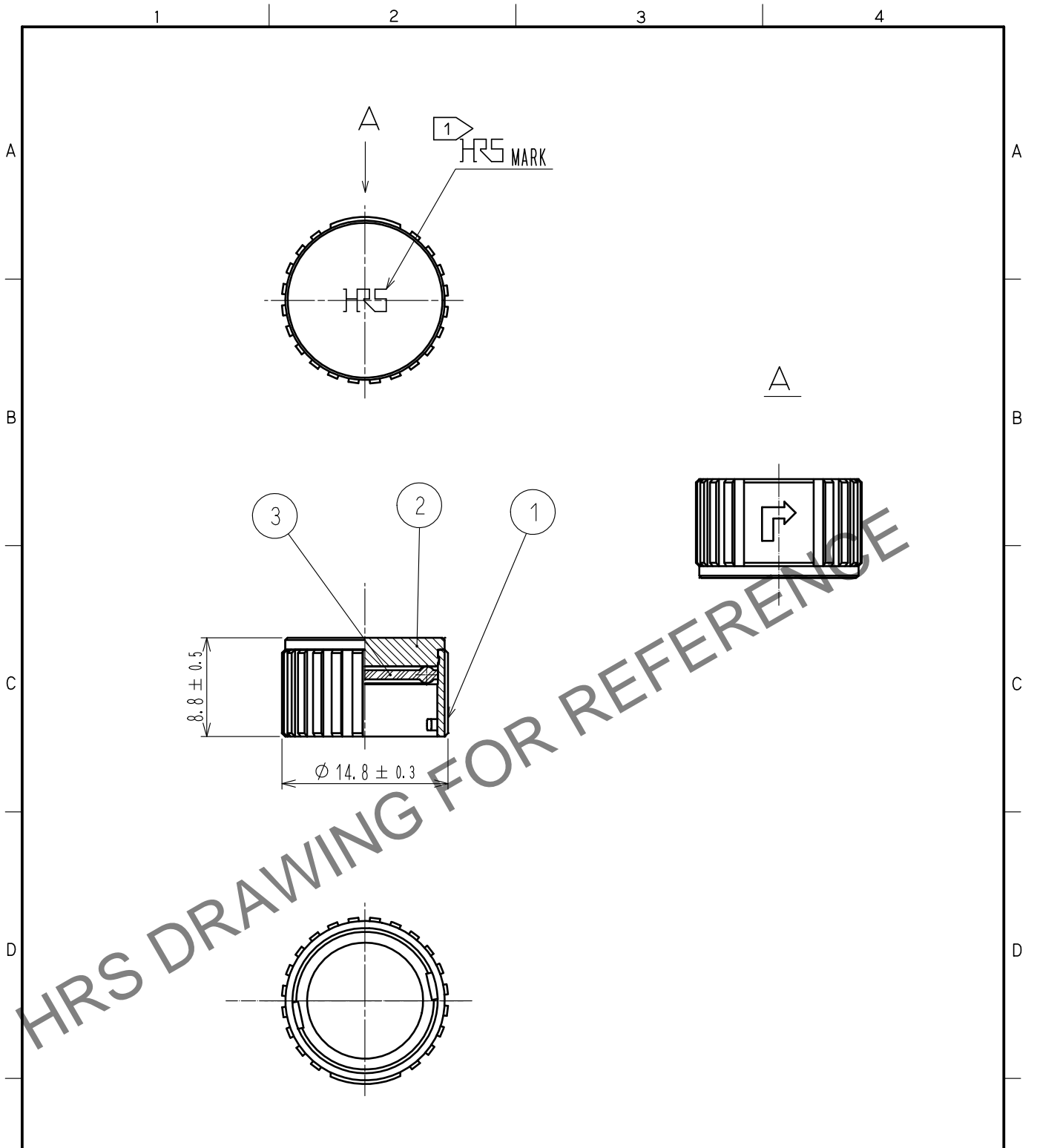


Oct.1.2024 Copyright 2024 HIROSE ELECTRIC CO., LTD. All Rights Reserved.  
 In case of consideration for using Automotive equipment / device which demand high reliability, kindly contact our sales window correspondents.



HRS DRAWING FOR REFERENCE

NOTES  
 1 ROTATION EXAMPLES OF HRS MARK ARE SHOWN.  
 2 THIS PRODUCT IS A CAP FOR LF10WBR※-※(※).  
 IT IS APPLICABLE REGARDLESS OF GIVEN ALPHABETS OR NUMBERS SHOWN AT ※.

2	BRASS	NICKEL PLATING	
1	ZINC ALLOY	NICKEL PLATING	3 ACRYLONITRILE BUTADIENE RUBBER (GRAY)
NO.	MATERIAL	FINISH . REMARKS	NO. MATERIAL FINISH . REMARKS
UNITS mm		SCALE 2 : 1	COUNT 
HIROSE ELECTRIC CO., LTD.		APPROVED :HY. KOBAYASHI 18.02.22	DRAWING NO. EDC-115795-31-00
		CHECKED :HY. KOBAYASHI 18.02.22	PART NO. LF10WBR-C(31)
		DESIGNED :TY. SUZUKI 18.02.22	CODE NO. CL136-3001-8-31
		DRAWN :HM. SAITO 18.02.20	