

May.1.2024 Copyright 2024 HIROSE ELECTRIC CO., LTD. All Rights Reserved.
In case of consideration for using Automotive equipment / device which demand high reliability, kindly contact our sales window correspondents.

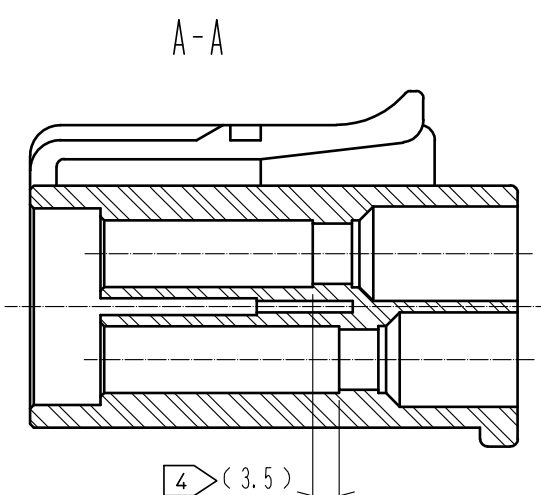
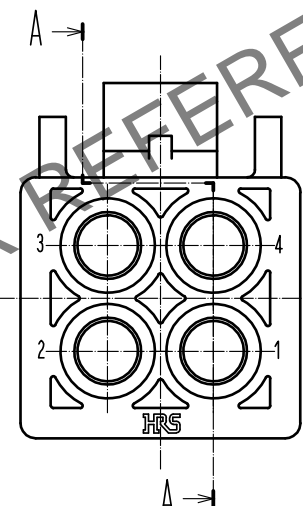
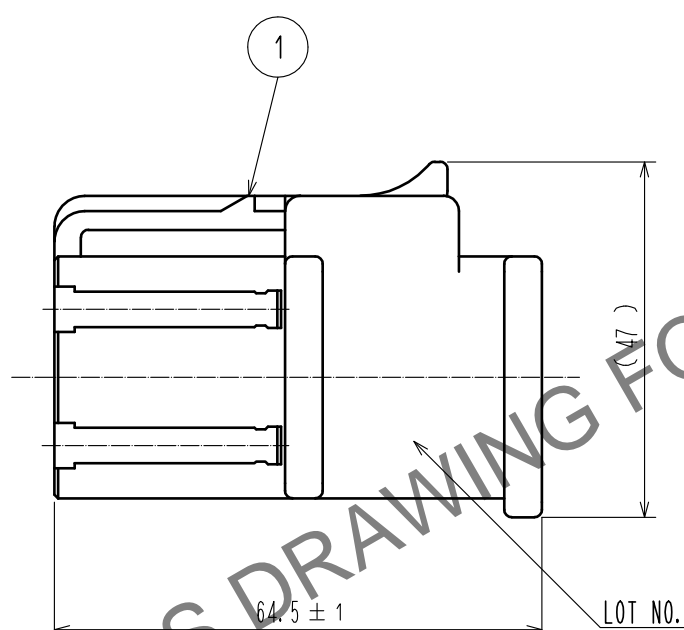
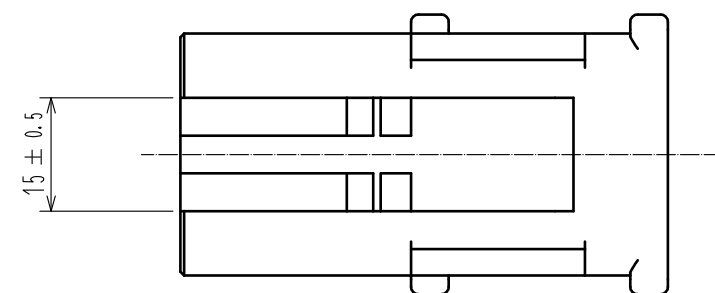
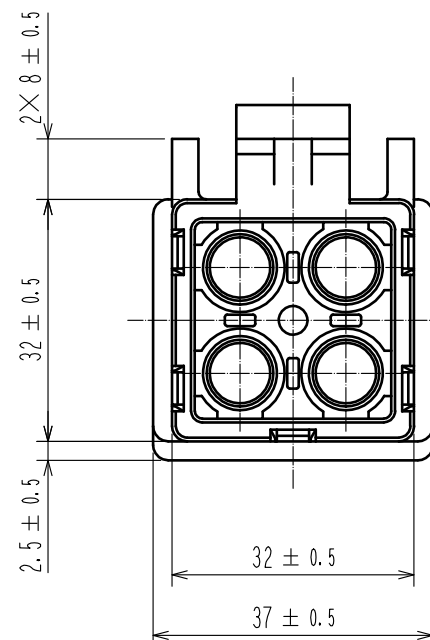
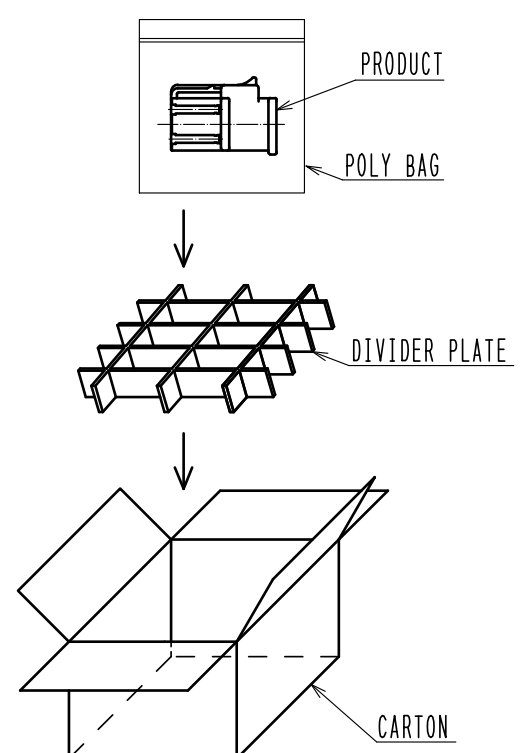


FIG. 1



- NOTES
- 1 APPLICABLE CRIMPING CONTACT :
EM-SC-113(C01) (CL138-0010-5-01) (CONDUCTOR AREA 5.26 TO 5.57mm²)
EM-SC-133(CL138-0018-7-00) (CONDUCTOR AREA 8mm²)
EM-SC-143(C01)(CL138-0024-0-01) (CONDUCTOR AREA 8.44 TO 8.92mm²)
 - 2 APPLICABLE CRIMP CONTACT EXTRACTION TOOL : EM-8-TP(CL150-0249-3)
 - 3 APPLICABLE GUIDE KEY : EM-GK(CL138-0026-5)
 - 4 CONTACT NO. 4 IS CONNECTED PRIOR TO 3 POWER CONTACTS (SEQUENCE STRUCTURE), AND FUNCTIONS AS GROUND CONTACT.
 - 5 EXAMPLE OF PACKAGING FOR THIS PRODUCT IS SHOWN FIG. 1.
 - 6 REFER TO ASSEMBLY PROCEDURE AND HANDLING MANUAL (ATAD-C0222) FOR THE ASSEMBLY OF THIS PRODUCT.

1	PBT	UL94V-0	(BLACK)					
NO.	MATERIAL	FINISH . REMARKS		NO.	MATERIAL	FINISH . REMARKS		
UNITS mm		SCALE 1 : 1		COUNT 	DESCRIPTION OF REVISIONS		DESIGNED	CHECKED DATE
HIROSE ELECTRIC CO., LTD.		APPROVED	HY. KOBAYASHI	20181203	DRAWING NO.	EDC-117060-81-00		
		CHECKED	HY. KOBAYASHI	20181203	PART NO.	EM35MP-4SC(81)		
		DESIGNED	DS. MATSUNE	20181203	CODE NO.	CL138-0020-9-81		
		DRAWN	DS. MATSUNE	20181203				