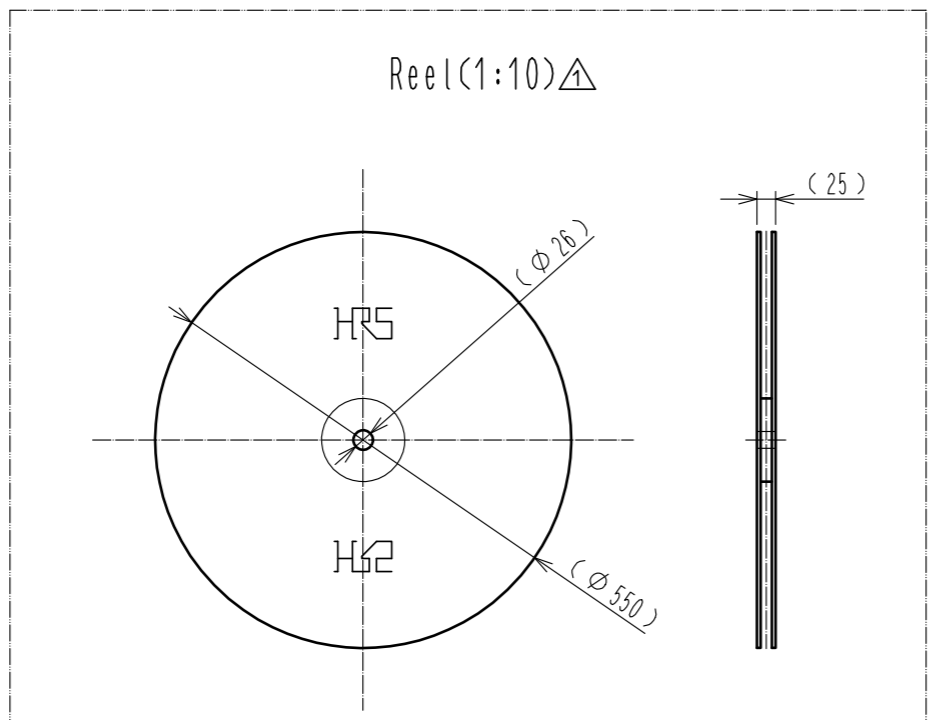
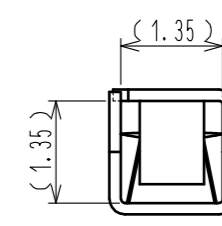
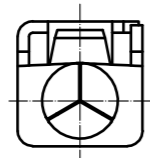
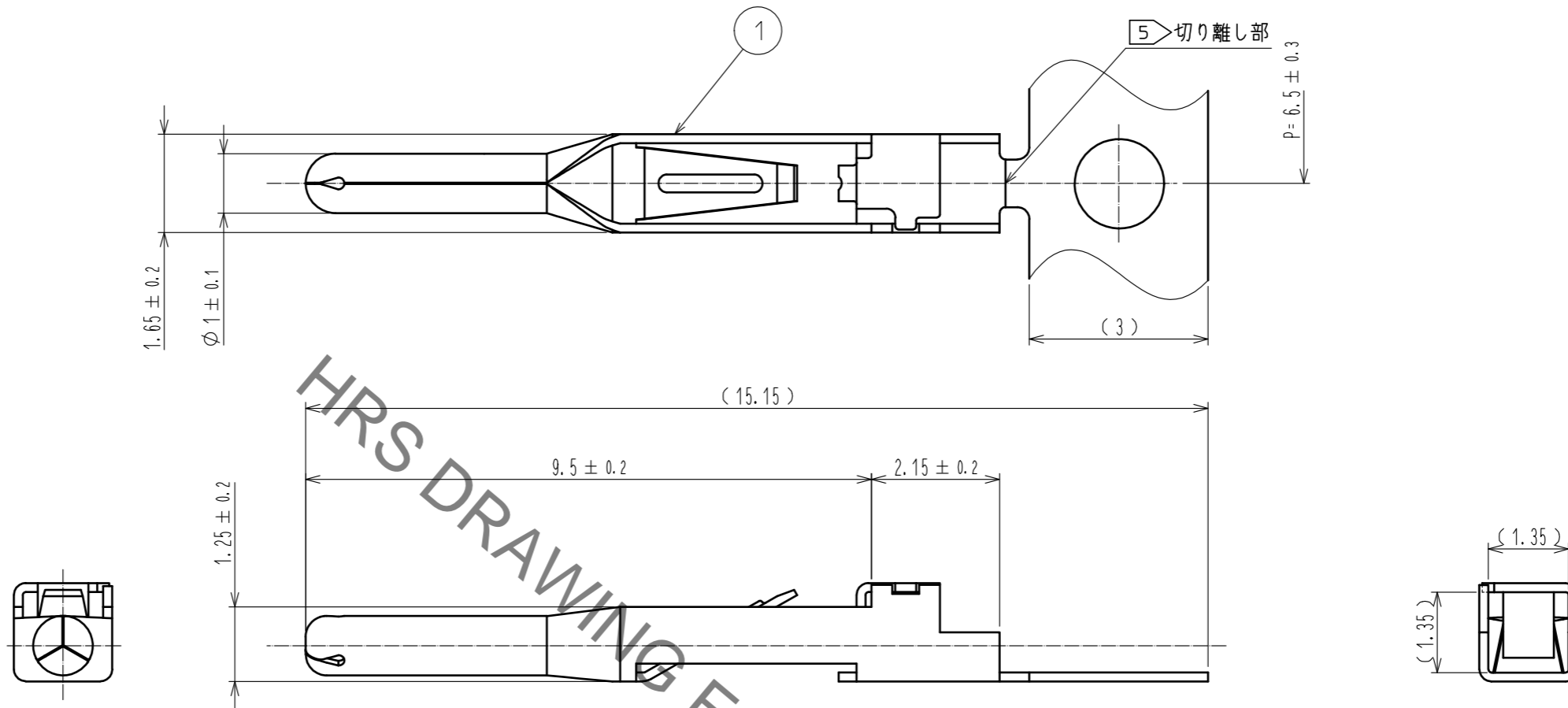


Oct.1.2021 Copyright 2021 HIROSE ELECTRIC CO., LTD. All Rights Reserved.
In case of consideration for using Automotive equipment / device which demand high reliability, kindly contact our sales window correspondents.



- Notes
- 1 The product is apply to the wire AWG#22 to 24(Wire jacket diameter: $\phi 1.4$ to 1.6)
 - 2 Per reel : 10,000 contacts.
 - 3 Surface plating : Tin plating $1\mu\text{m}$ min.
Under plating : Nickel plating $1\mu\text{m}$ min.
 - 4 The assembly of this product applies to the manual ETAD-C0454-00.
 - 5 Bend the terminal and carrier up and down in the axial direction of the pilot hole to separate them.

1	Copper alloy	3						
NO.	MATERIAL	FINISH .	REMARKS	NO.	MATERIAL	FINISH .	REMARKS	
UNITS		SCALE	COUNT	DESCRIPTION OF REVISIONS		DESIGNED	CHECKED	DATE
mm		10 : 1	1	DIS-C-00004261		SH. KOYAMA	HY. KOBAYASHI	20200917
HRS HIROSE ELECTRIC CO., LTD.		APPROVED : YH. YAMADA	20200128	DRAWING NO.		EDC-390467-00-00		
		CHECKED : HN. TANAKA	20200128	PART NO.		BH12-P1-213		
		DESIGNED : SH. KOYAMA	20200128	CODE NO.		CL140-0017-0-00		
		DRAWN : SH. KOYAMA	20200128					