

May.1.2024 Copyright 2024 HIROSE ELECTRIC CO., LTD. All Rights Reserved.
In case of consideration for using Automotive equipment / device which demand high reliability, kindly contact our sales window correspondents.

A(Figure.1 Locked State External View)(2:1)

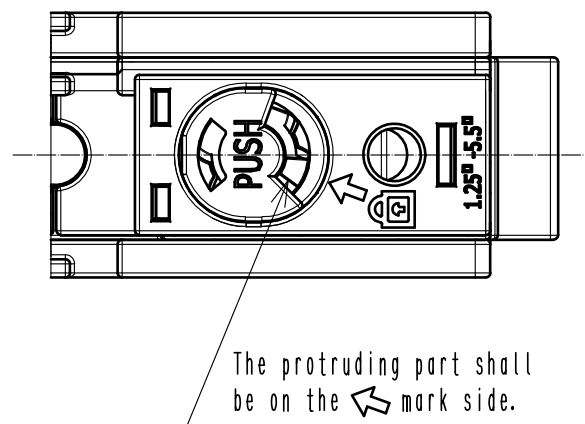
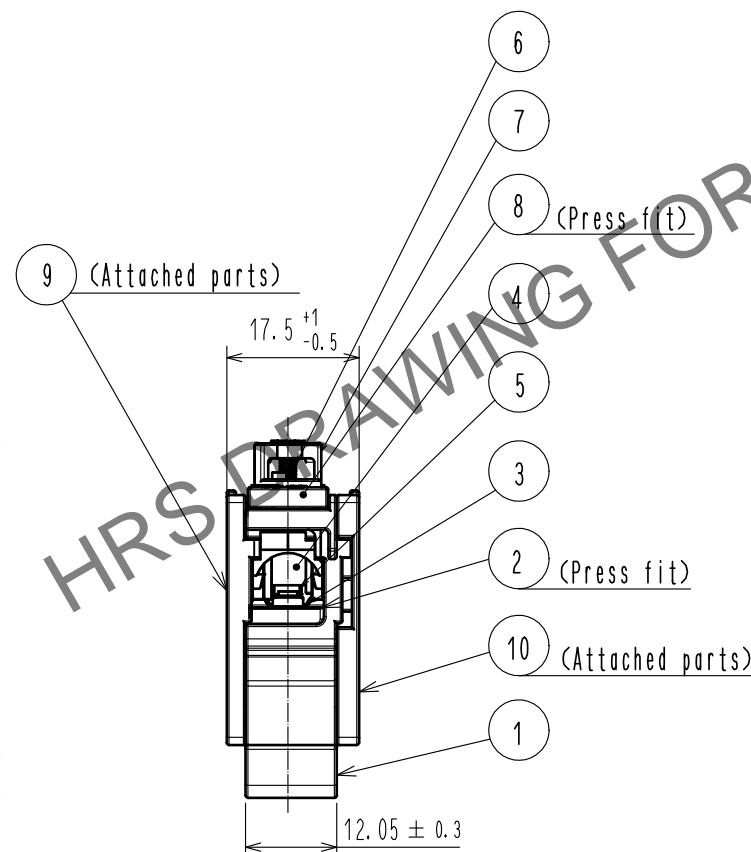
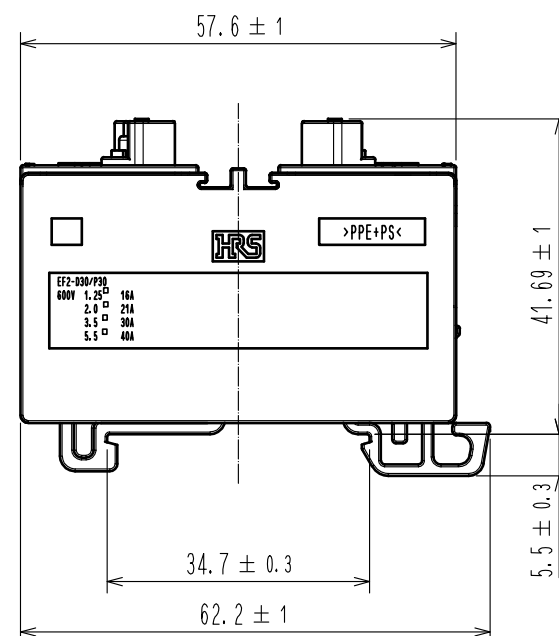
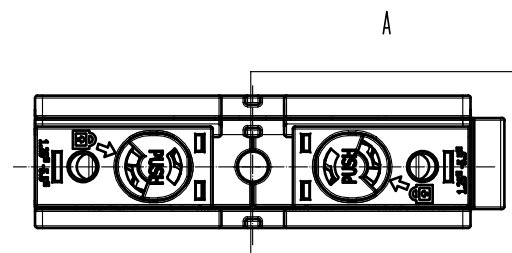
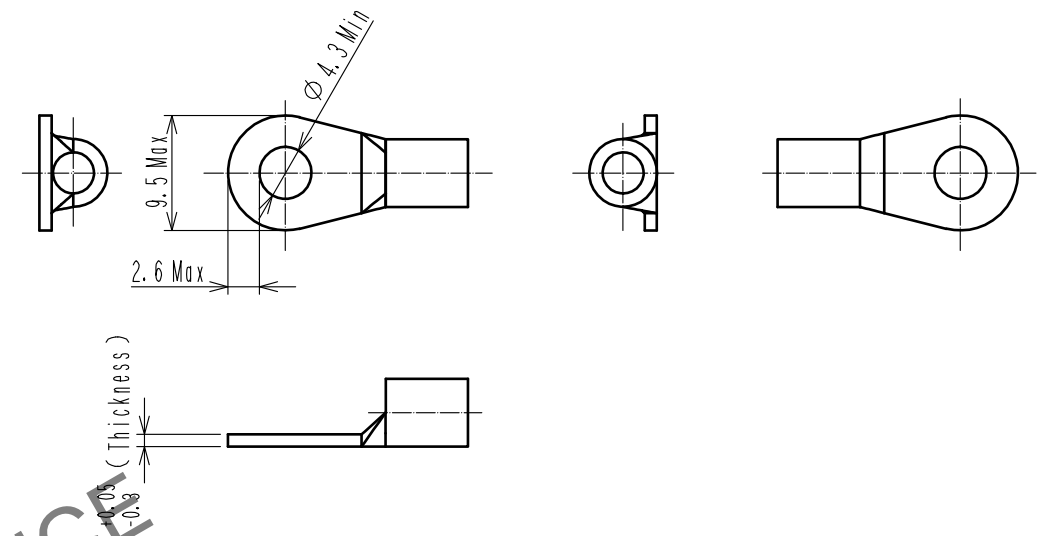


Figure.2 Applicable Contact (Commercial item)(Free)



- Notes
- Applicable crimp contacts:
NICHIFU CO.,LTD R5.5-4 or J.S.T.MFG.CO.,LTD R5.5-4 or a similar product.
NICHIFU CO.,LTD R3.5-4 or J.S.T.MFG.CO.,LTD 3.5-R4 or a similar product.
NICHIFU CO.,LTD R2-5 or J.S.T.MFG.CO.,LTD R2-5 or a similar product.
NICHIFU CO.,LTD R1.25-5 or J.S.T.MFG.CO.,LTD R1.25-5 or a similar product.
 - Applicable crimping tool: JIS-C-9711 MAXELL IZUMI CO.,LTD 5N18 or REC-Li14S.
 - Please assemble this product in coordination with the assembly manual ETAD-C0387-00.
 - When inserting the contact, please do so until Ref. No. ⑤ rotates back to its original position (shown in Figure.1 Locked State External View).
Furthermore, lightly pull the cable to confirm that the contact is locked and mated.
 - Points to note before use:
 - Use only tin coated material.
 - Please check that dimesnsions satisfy those of Figure.2 and that there is no deformation, dirt etc., or abnormal contact resistance value.
 - Insertion and withdrawal forces, as well as contact resitance values could change due to the quality of the coating. Therefore, please evaluate beforehand.
 - Warning** 6. This product is not hot pluggable.
 - Warning** 7. Keep your fingers and other conductors from coming into contact with the electrically charged parts in order to avoid electrical shock or a short circuit.
 - To prevent parts ⑨ and ⑩ from dropping off, attach fasteners on both side.

5	PBT	(Orange) UL94V-0	10	m-PPE	(Black) UL94V-0
4	PBT	(Black) UL94V-0	9	m-PPE	(Black) UL94V-0
3	Stainless steel		8	m-PPE	(Black) UL94V-0
2	Copper	Tin plating 3μm min	7	PBT	(Black) UL94V-0
1	m-PPE	(Black) UL94V-0	6	Stainless steel	
NO.	MATERIAL	FINISH . REMARKS	NO.	MATERIAL	FINISH . REMARKS
UNITS mm	⊙	SCALE 1 : 1	COUNT △	DESCRIPTION OF REVISIONS	DESIGNED
HRS HIROSE ELECTRIC CO., LTD.		APPROVED : YH. YAMADA	20190703	DRAWING NO.	EDC-384798-00-00
		CHECKED : TP. KOMATSU	20190703	PART NO.	EF2-D30B-1
		DESIGNED : EK. KIDO	20190703	CODE NO.	CL142-0116-0-00
		DRAWN : EK. KIDO	20190703		
				1	1