

Apr.1.2024 Copyright 2024 HIROSE ELECTRIC CO., LTD. All Rights Reserved.
In case of consideration for using Automotive equipment / device which demand high reliability, kindly contact our sales window correspondents.

A
B
C
D
E
F

A(Figure.1 Locked State External View)(2:1)

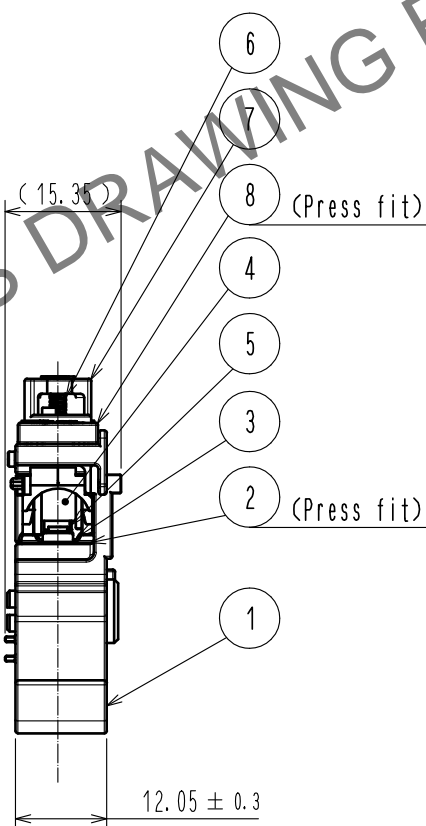
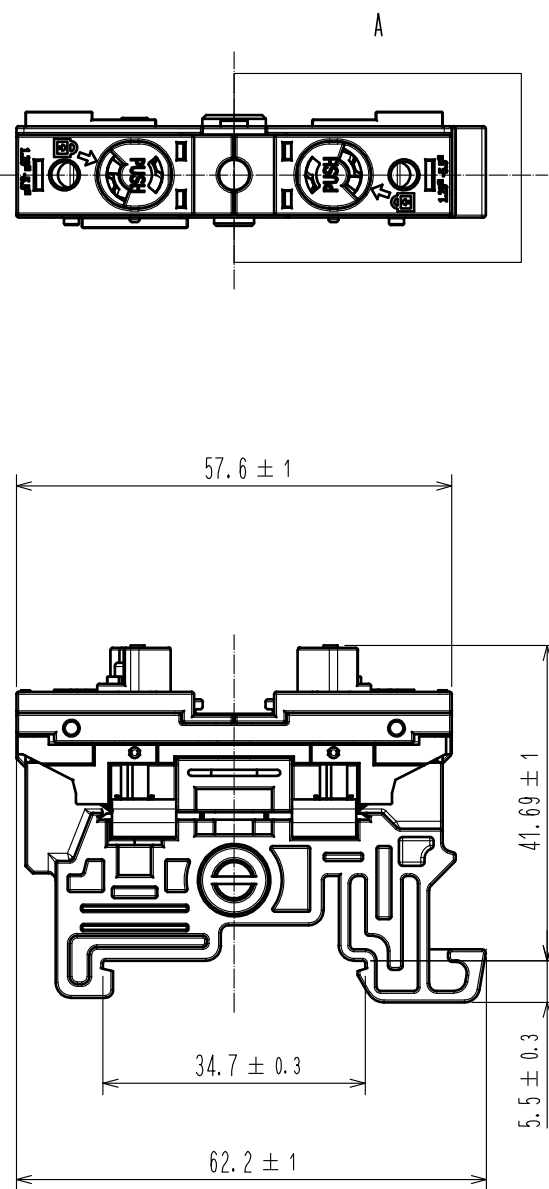
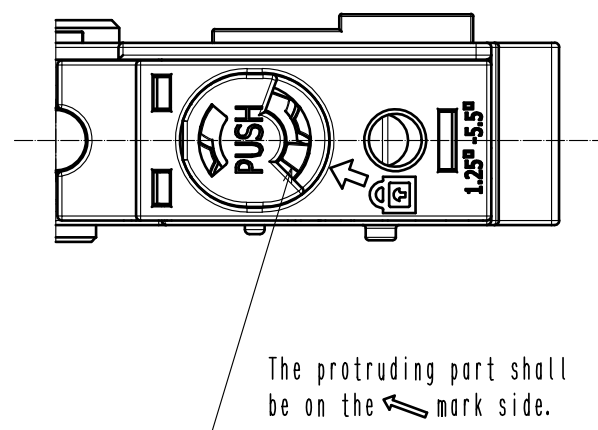
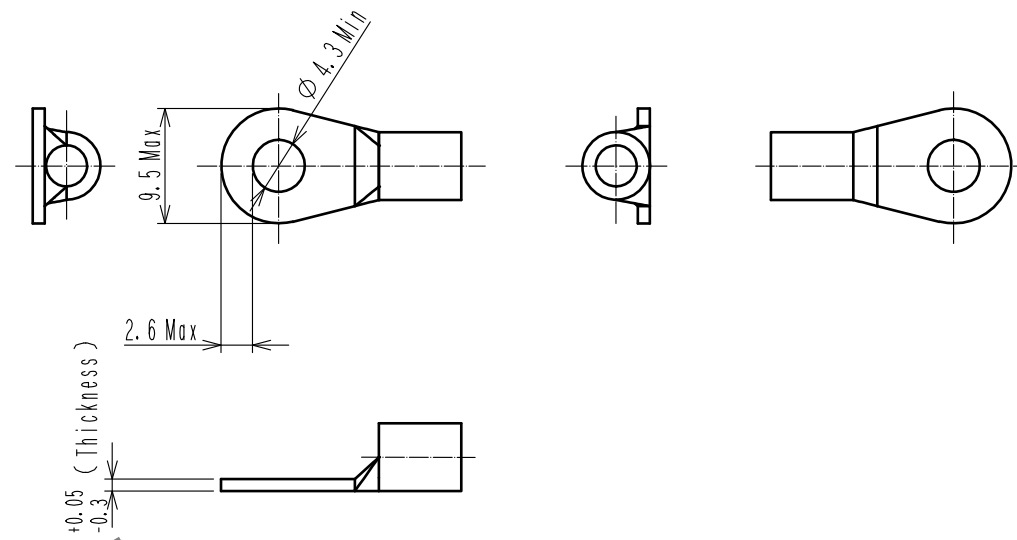


Figure.2 Applicable Contact (Commercial item)(Free)



- Notes
1. This product is design for multiply connecting, please use together with EF2-D30-EP. This product can not be used solely. Please see Figure.3 for assembling method.
 2. Applicable crimp contacts:
NICHIFU CO., LTD R5.5-4 or J.S.T.MFG.CO.,LTD R5.5-4 or a similar product.
NICHIFU CO., LTD R3.5-4 or J.S.T.MFG.CO.,LTD 3.5-R4 or a similar product.
NICHIFU CO., LTD R2-5 or J.S.T.MFG.CO.,LTD R2-5 or a similar product.
NICHIFU CO., LTD R1.25-5 or J.S.T.MFG.CO.,LTD R1.25-5 or a similar product.
 3. Applicable crimping tool: JIS-C-9711 MAXELL IZUMI CO.,LTD 5N18 or REC-Li14S.
 4. Please assemble this product in coordination with the assembly manual ETAD-C0387-00.
 5. When inserting the contact, please do so until Ref. No. ⑤ rotates back to its original position (shown in Figure.1 Locked State External View). Furthermore, lightly pull the cable to confirm that the contact is locked and mated.
 6. Points to note before use:
 - Use only tin coated material.
 - Please check that dimesnsions satisfy those of Figure.2 and that there is no deformation, dirt etc., or abnormal contact resistance value.
 - Insertion and withdrawal forces, as well as contact resitance values could change due to the quality of the coating. Therefore, please evaluate beforehand.
- Warning 7. This product is not hot pluggable.
- Warning 8. Keep your fingers and other conductors from coming into contact with the electrically charged parts in order to avoid electrical shock or a short circuit.
- 9 To prevent parts ⑨ and ⑩ of EF2-D30B-1 from dropping off, attach fasteners on both side.

4	PBT	(Black) UL94V-0	8	m-PPE	(Black) UL94V-0
3	Stainless steel		7	PBT	(Black) UL94V-0
2	Copper	Tin plating 3μm min	6	Stainless steel	
1	m-PPE	(Black) UL94V-0	5	PBT	(Orange) UL94V-0
NO.	MATERIAL	FINISH . REMARKS	NO.	MATERIAL	FINISH . REMARKS
UNITS mm					
SCALE 1 : 1		COUNT	DESCRIPTION OF REVISIONS		
DESIGNED		DATE	DESIGNED		
CHECKED		DATE	CHECKED		
DRAWN		DATE	DATE		
APPROVED		DATE	APPROVED		
HRS		DATE	HRS		
HIROSE ELECTRIC CO., LTD.		DATE	HIROSE ELECTRIC CO., LTD.		
DRAWING NO.		DATE	DRAWING NO.		
EDC-384798-01-00		DATE	EDC-384798-01-00		
PART NO.		DATE	PART NO.		
EF2-D30B-1(01)		DATE	EF2-D30B-1(01)		
CODE NO.		DATE	CODE NO.		
CL142-0116-0-01		DATE	CL142-0116-0-01		
1		DATE	1		
2		DATE	2		

A
B
C
D
E
F

Apr.1.2024 Copyright 2024 HIROSE ELECTRIC CO., LTD. All Rights Reserved.
In case of consideration for using Automotive equipment / device which demand high reliability, kindly contact our sales window correspondents.

Figure.3 How to stack EF2-D30. (Example: 3 connectors)

The stacking method is as follows.

Connector : EF2-D30B-1(01) 3pcs
End Plate : EF2-D30-EP 1set

Place the three EF2-D30B-1(01) in a row
and install EF2-D30-EP on both sides.

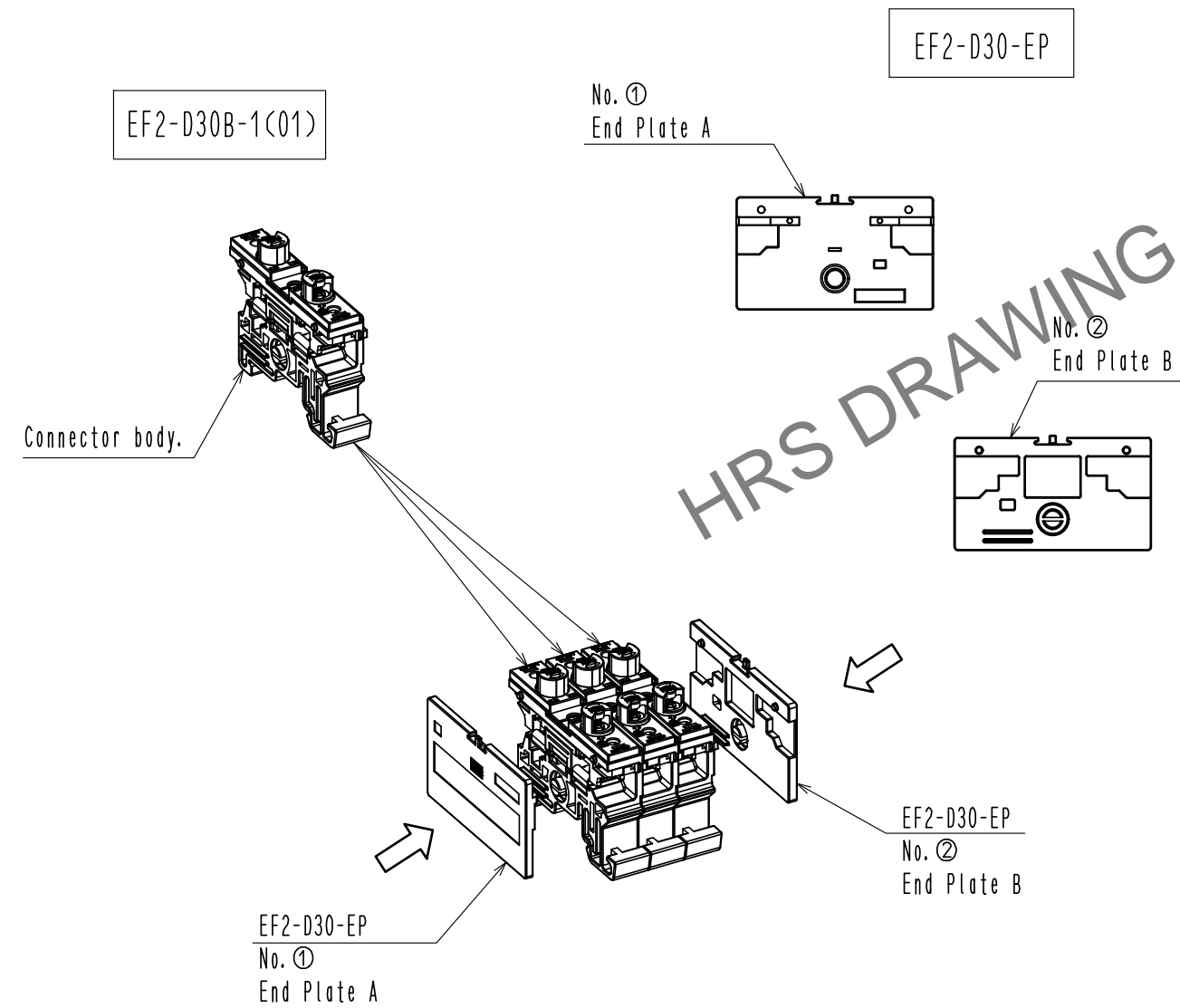
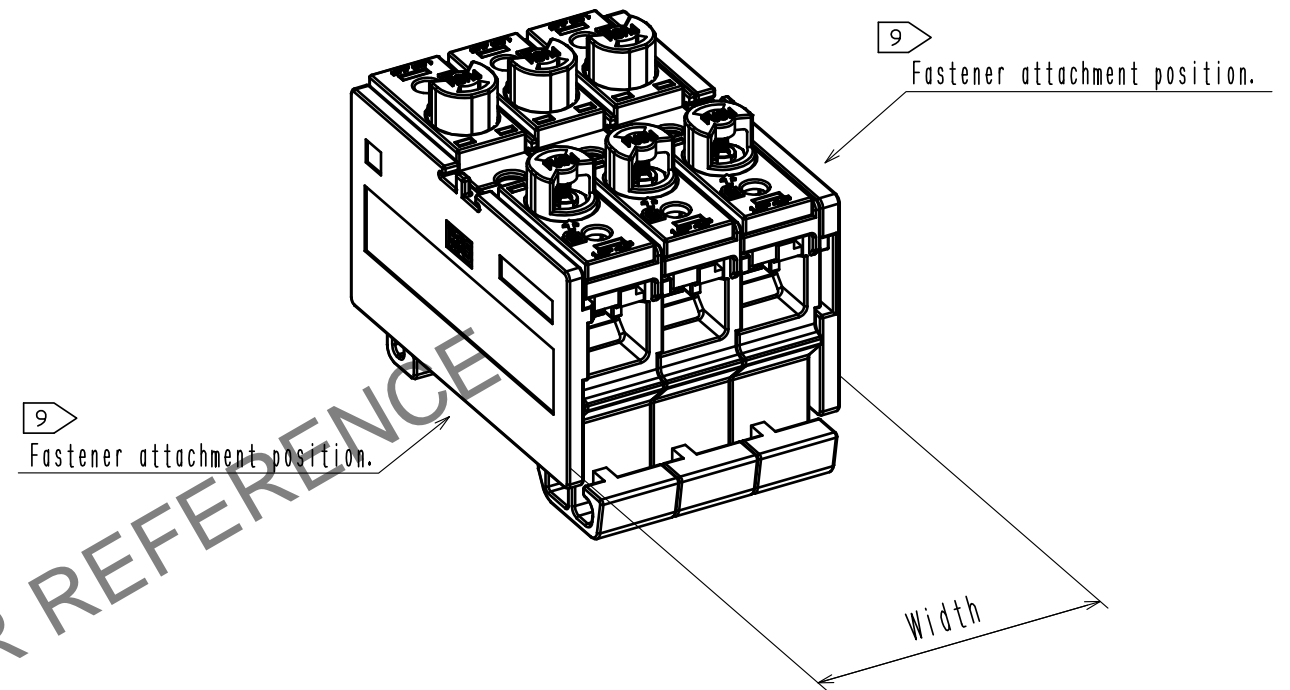


Figure.4 From Connector to Connectors



Number of Connector	1	2	3	4	5	n
Width	17.5	29.55	41.6	53.65	65.7	$5.45+12.05 \times n$

HRS

DRAWING NO. EDC-384798-01-00
PART NO. EF2-D30B-1(01)
CODE NO. CL142-0116-0-01

2/2