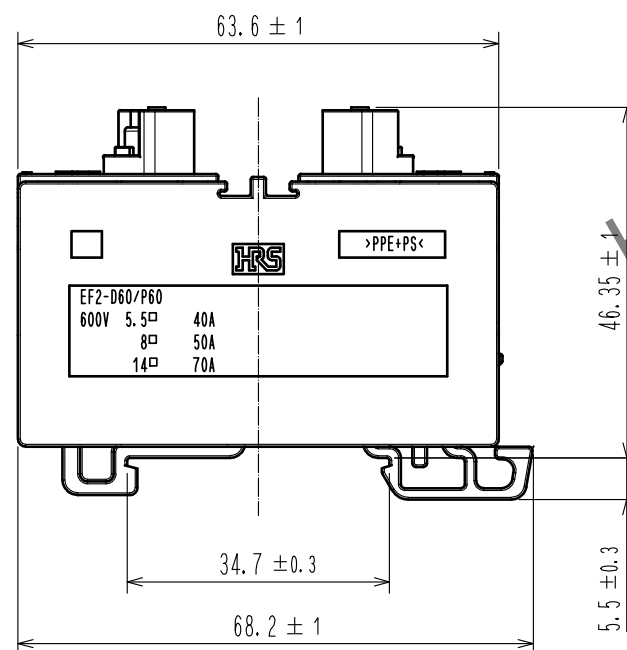
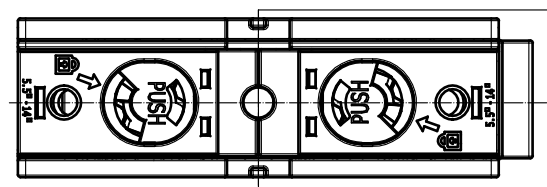
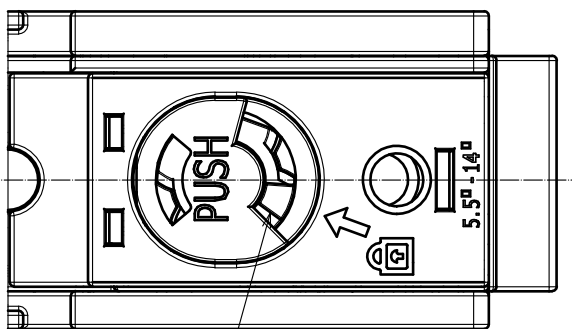


Apr.1.2024 Copyright 2024 HIROSE ELECTRIC CO., LTD. All Rights Reserved.
In case of consideration for using Automotive equipment / device which demand high reliability, kindly contact our sales window correspondents.



A(Figure.1 Locked State External View)(2:1)



The protruding part shall be on the mark side.

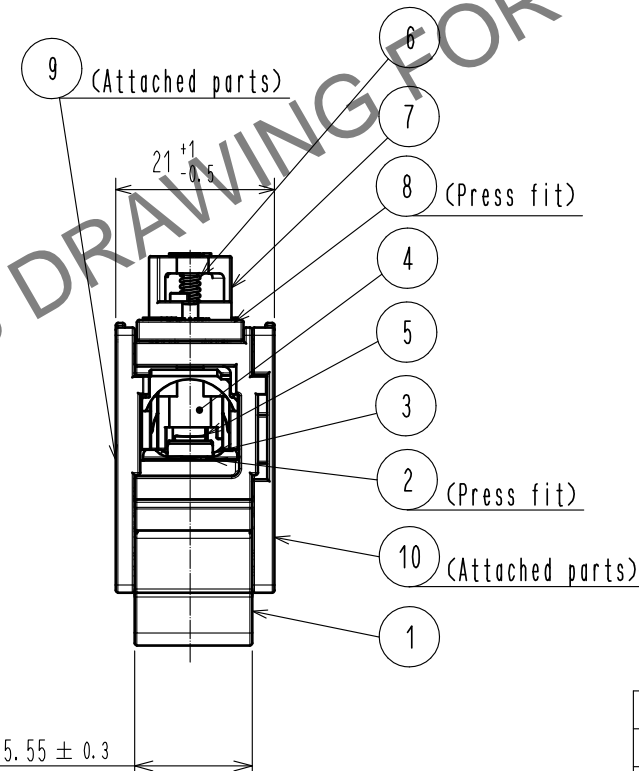
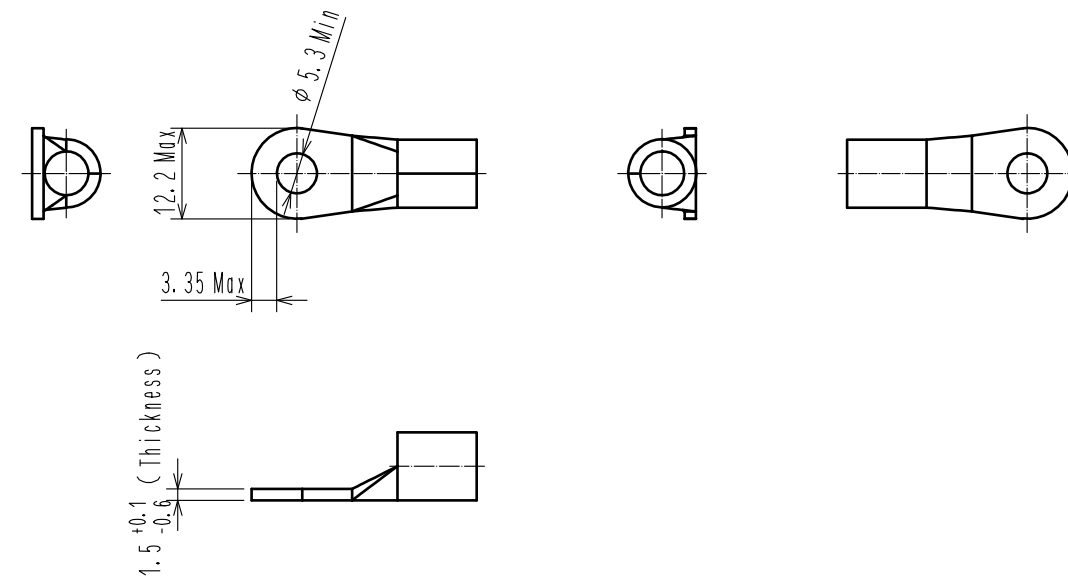
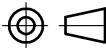
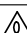




Figure.2 Applicable Contact (Commercial item)(Free)



- Notes
- Applicable crimp contacts:
NICHIFU CO., LTD R5.5-6 or J. S. T. MFG. CO., LTD R5.5-6 or a similar product.
NICHIFU CO., LTD R8-5 or J. S. T. MFG. CO., LTD R8-5 or a similar product.
NICHIFU CO., LTD R14-5 or J. S. T. MFG. CO., LTD R14-5 or a similar product.
 - Applicable crimping tool: JIS-C-9711 MAXELL IZUMI CO., LTD 214A or REC-Li60S.
 - Please assemble this product in coordination with the assembly manual ETAD-C0387-00.
 - When inserting the contact, please do so until Ref. No. ⑤ rotates back to its original position (shown in Figure.1 Locked State External View).
Furthermore, lightly pull the cable to confirm that the contact is locked and mated.
 - Points to note before use:
 - Use only tin coated material.
 - Please check that dimensions satisfy those of Figure.2 and that there is no deformation, dirt etc., or abnormal contact resistance value.
 - Insertion and withdrawal forces, as well as contact resistance values could change due to the quality of the coating. Therefore, please evaluate beforehand.
 - Warning** This product is not hot pluggable.
 - Warning** Keep your fingers and other conductors from coming into contact with the electrically charged parts in order to avoid electrical shock or a short circuit.
 - To prevent parts ⑨ and ⑩ from dropping off, attach fasteners on both side.

5	PBT	(Orange) UL94V-0	10	m-PPE	(Black) UL94V-0					
4	PBT	(Black) UL94V-0	9	m-PPE	(Black) UL94V-0					
3	Stainless steel		8	m-PPE	(Black) UL94V-0					
2	Copper	Tin plating 3μm min	7	PBT	(Black) UL94V-0					
1	m-PPE	(Black) UL94V-0	6	Stainless steel						
NO.	MATERIAL	FINISH . REMARKS		NO.	MATERIAL	FINISH . REMARKS				
UNITS mm				SCALE 1 : 1		COUNT	DESCRIPTION OF REVISIONS	DESIGNED	CHECKED	DATE
 HIROSE ELECTRIC CO., LTD.		APPROVED : YH. YAMADA		20190703		DRAWING NO. EDC-384800-00-00				
		CHECKED : TP. KOMATSU		20190703		PART NO. EF2-D60B-1				
		DESIGNED : EK. KIDO		20190703		CODE NO. CL142-0118-0-00				
		DRAWN : EK. KIDO		20190703		 1/1				