

May.1.2021 Copyright 2021 HIROSE ELECTRIC CO., LTD. All Rights Reserved.  
In case of consideration for using Automotive equipment / device which demand high reliability, kindly contact our sales window correspondents.

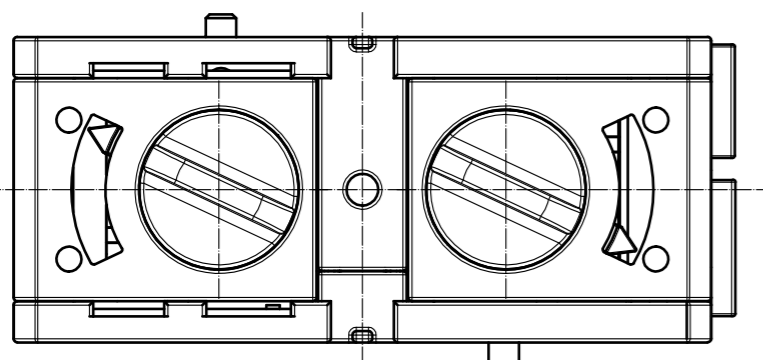
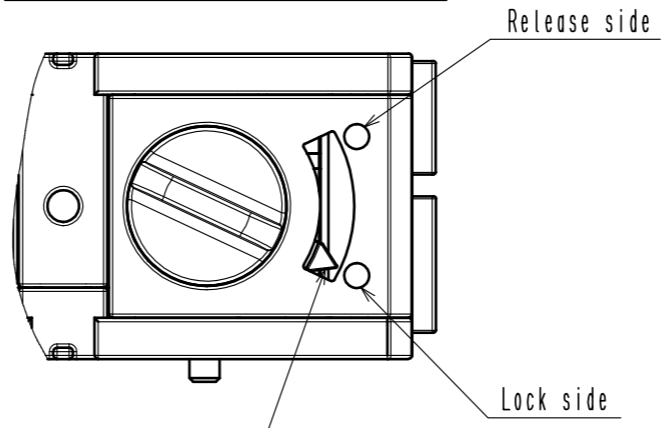
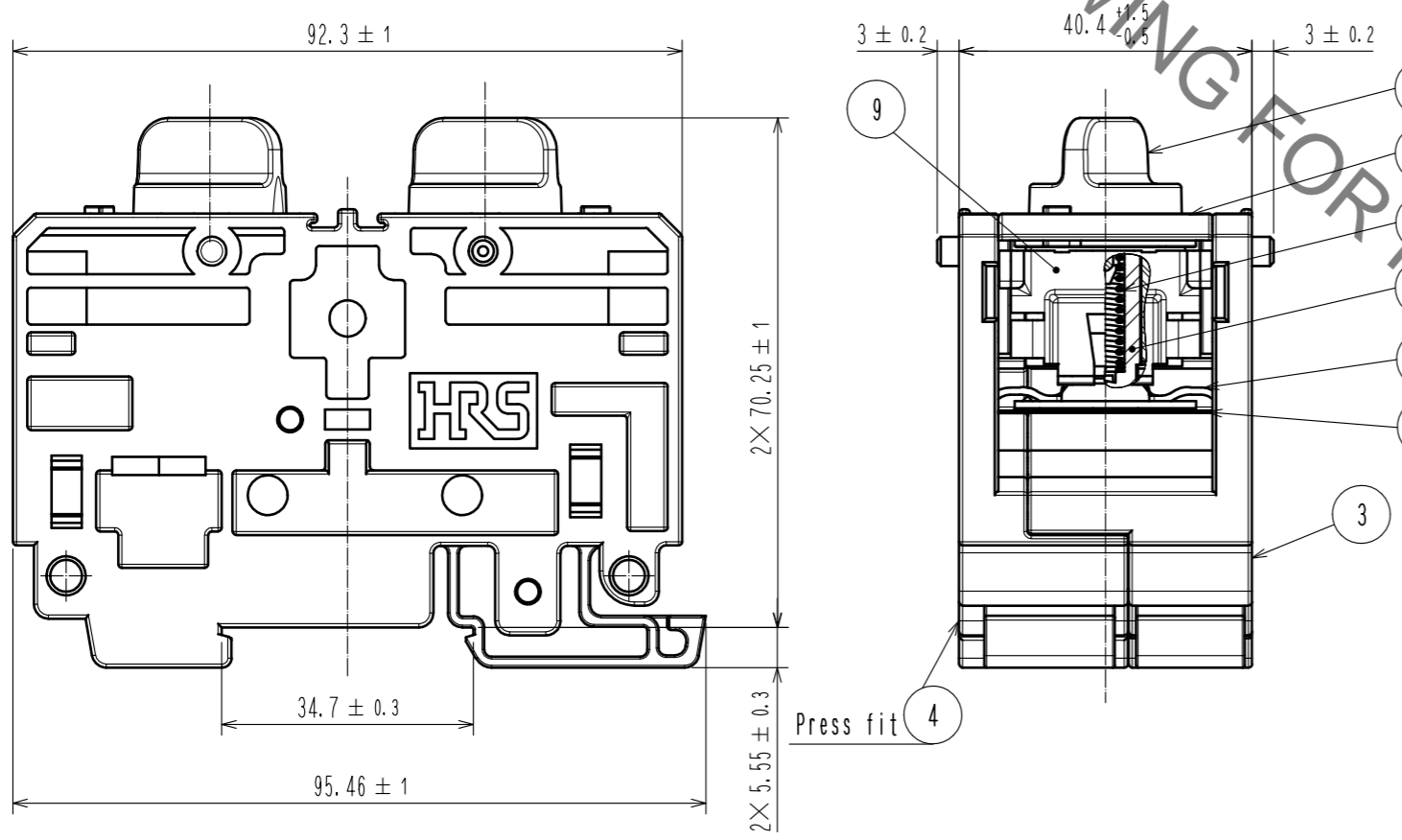
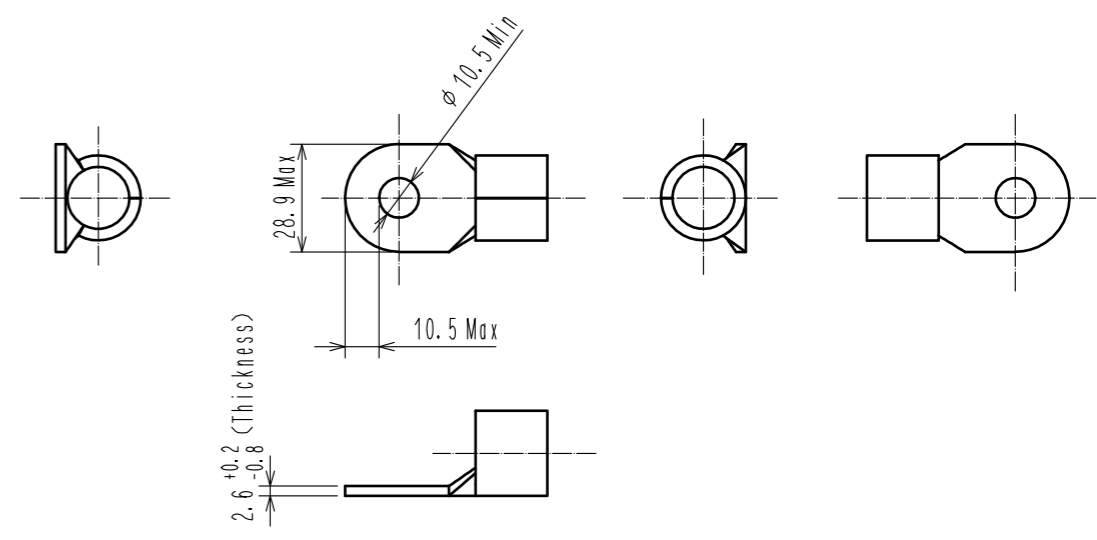


Figure.1 Locked State External View



The protruding part shall be on the Lock side.

Figure.2 Applicable Contact (Commercial item)(Free)



- Notes
- This product should be handled in accordance with the EF2 series guideline ATAD-C0387-00.
  - Applicable crimp contacts:  
NICHIFU CO.,LTD R60-10 J.S.T.MFG.CO.,LTD R60-10 or equivalent.  
NICHIFU CO.,LTD R100-10 J.S.T.MFG.CO.,LTD R100-10 or equivalent.
  - Applicable crimping tool: JIS-C-9711 MAXELL IZUMI CO.,LTD REC-Li150.
  - When inserting the contact, please do so until Ref. No. ⑥ rotates back to its original position (shown in Figure.1 Locked State External View).  
Furthermore, lightly pull the cable to confirm that the contact is locked and mated.
  - Points to note before use:
    - Use only tin coated material.
    - Please check that dimensions satisfy those of Figure.2 and that there is no deformation, dirt etc., or abnormal contact resistance value.
    - Insertion and withdrawal forces, as well as contact resistance values could change due to the quality of the coating. Therefore, please evaluate beforehand.
- ⚠ Warning 6. This product is not hot pluggable.  
⚠ Warning 7. Keep your fingers and other conductors from coming into contact with the electrically charged parts in order to avoid electrical shock or a short circuit.

5	PBT	(Black) UL94V-0						
4	m-PPE	(Black) UL94V-0	9	m-PPE	(Black) UL94V-0			
3	m-PPE	(Black) UL94V-0	8	m-PPE	(Black) UL94V-0			
2	Stainless steel		7	Stainless steel				
1	Copper	Tin plating 1μm min	6	PBT	(Red) UL94V-0			
NO.	MATERIAL	FINISH . REMARKS	NO.	MATERIAL	FINISH . REMARKS			
UNITS	mm	SCALE	1 : 1	COUNT	DESCRIPTION OF REVISIONS	DESIGNED	CHECKED	DATE
<b>HRS</b> HIROSE ELECTRIC CO., LTD.		APPROVED : TP. KOMATSU	20200304	DRAWING NO.	EDC-387454-00-00			
		CHECKED : TP. KOMATSU	20200227	PART NO.	EF2A-D200B-1			
		DESIGNED : EK. KIDO	20200226	CODE NO.	CL142-0228-0-00			
		DRAWN : EK. KIDO	20200226					