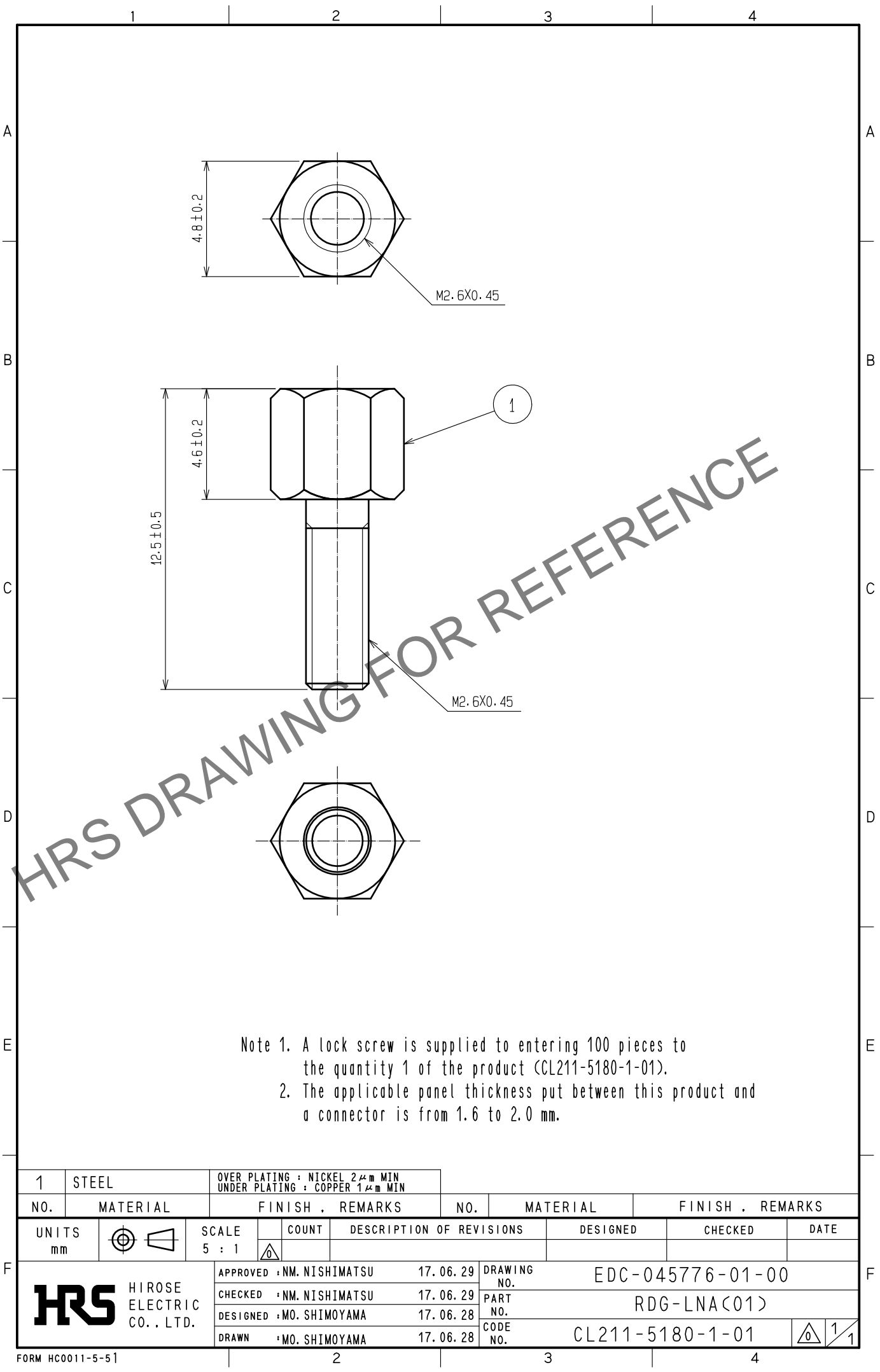
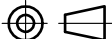





May.1.2024 Copyright 2024 HIROSE ELECTRIC CO., LTD. All Rights Reserved.
In case of consideration for using Automotive equipment / device which demand high reliability, kindly contact our sales window correspondents.



Note 1. A lock screw is supplied to entering 100 pieces to the quantity 1 of the product (CL211-5180-1-01).
2. The applicable panel thickness put between this product and a connector is from 1.6 to 2.0 mm.

1		STEEL		OVER PLATING : NICKEL 2μm MIN UNDER PLATING : COPPER 1μm MIN													
NO.		MATERIAL		FINISH . REMARKS		NO.		MATERIAL		FINISH . REMARKS							
UNITS mm				SCALE 5 : 1				COUNT	DESCRIPTION OF REVISIONS		DESIGNED	CHECKED	DATE				
 HIROSE ELECTRIC CO., LTD.								APPROVED		NM. NISHIMATSU		17.06.29		DRAWING NO.		EDC-045776-01-00	
								CHECKED		NM. NISHIMATSU		17.06.29		PART NO.		RDG-LNA<01>	
								DESIGNED		MO. SHIMOYAMA		17.06.28		CODE NO.		CL211-5180-1-01	
								DRAWN		MO. SHIMOYAMA		17.06.28				1 / 1	