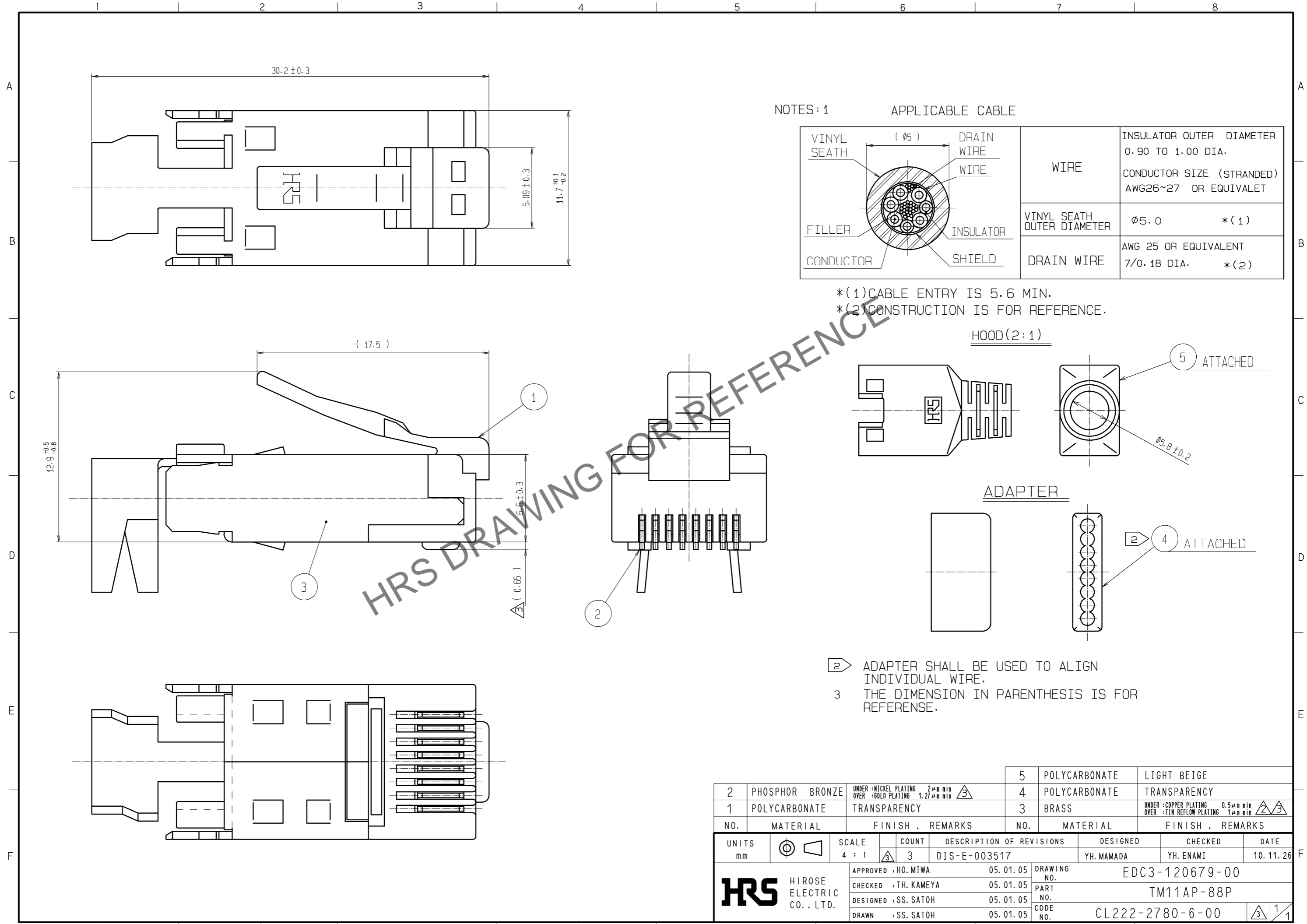


Feb.1.2025 Copyright 2025 HIROSE ELECTRIC CO., LTD. All Rights Reserved.
In case of consideration for using Automotive equipment / device which demand high reliability, kindly contact our sales window correspondents.



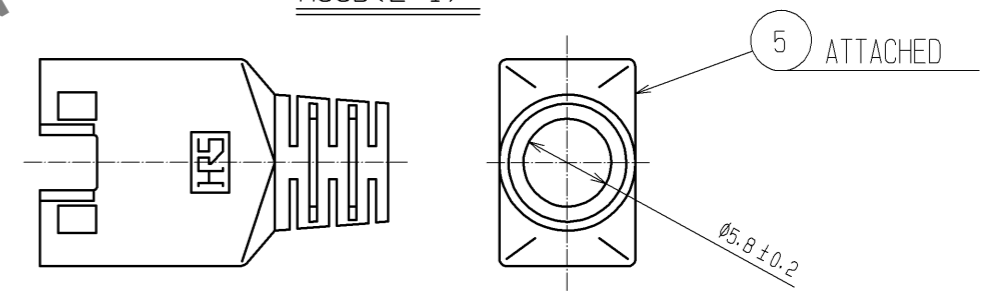
NOTES: 1

APPLICABLE CABLE

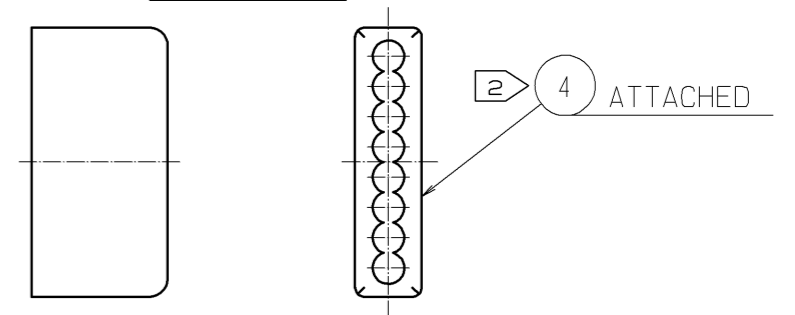
VINYL SEATH	(Ø 5)	DRAIN WIRE	WIRE	INSULATOR OUTER DIAMETER	0.90 TO 1.00 DIA.
FILLER		WIRE		CONDUCTOR SIZE (STRANDED)	AWG26~27 OR EQUIVALET
CONDUCTOR		INSULATOR	VINYL SEATH OUTER DIAMETER	Ø5.0	*(1)
		SHIELD	DRAIN WIRE	AWG 25 OR EQUIVALENT	7/0.18 DIA. *(2)

*(1) CABLE ENTRY IS 5.6 MIN.
*(2) CONSTRUCTION IS FOR REFERENCE.

HOOD (2:1)



ADAPTER



2 ADAPTER SHALL BE USED TO ALIGN INDIVIDUAL WIRE.
3 THE DIMENSION IN PARENTHESIS IS FOR REFERENCE.

2	PHOSPHOR BRONZE	UNDER :NICKEL PLATING 2µm min OVER :GOLD PLATING 1.27µm min	5	POLYCARBONATE	LIGHT BEIGE	
1	POLYCARBONATE	TRANSPARENCY	4	POLYCARBONATE	TRANSPARENCY	
			3	BRASS	UNDER :COPPER PLATING 0.5µm min OVER :TIN REFLOW PLATING 1µm min	
NO.	MATERIAL	FINISH . REMARKS	NO.	MATERIAL	FINISH . REMARKS	
UNITS	mm	SCALE	4 : 1	COUNT	3	
DESCRIPTION OF REVISIONS		DESIGNED	YH. MAMADA		CHECKED	YH. ENAMI
DATE		10.11.26		DATE		
APPROVED : HO. MIWA		05.01.05		DRAWING NO.		
CHECKED : TH. KAMEYA		05.01.05		EDC3-120679-00		
DESIGNED : SS. SATOH		05.01.05		PART NO.		
DRAWN : SS. SATOH		05.01.05		TM11AP-88P		
				CODE NO.		
				CL222-2780-6-00		
				1/1		