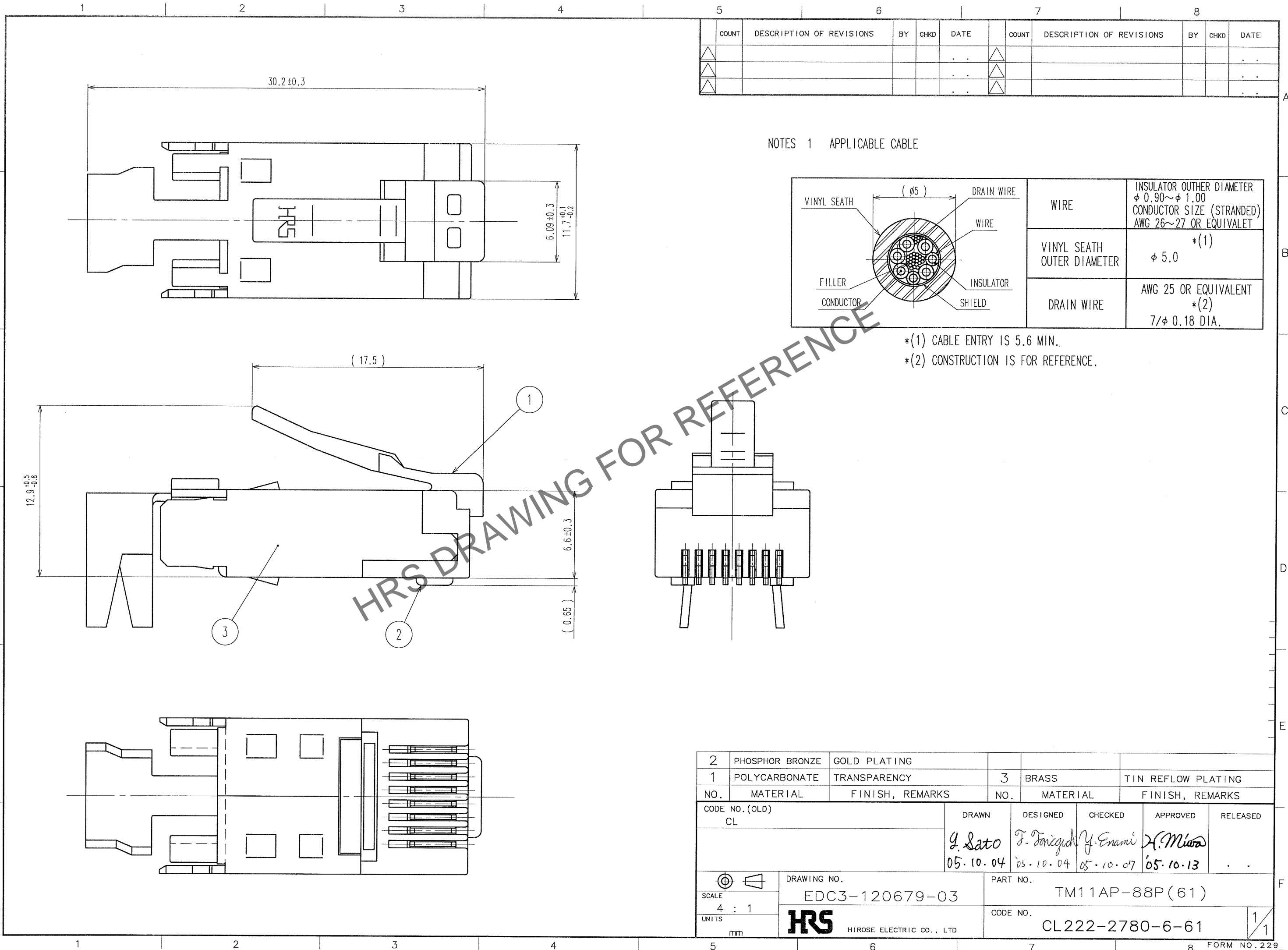
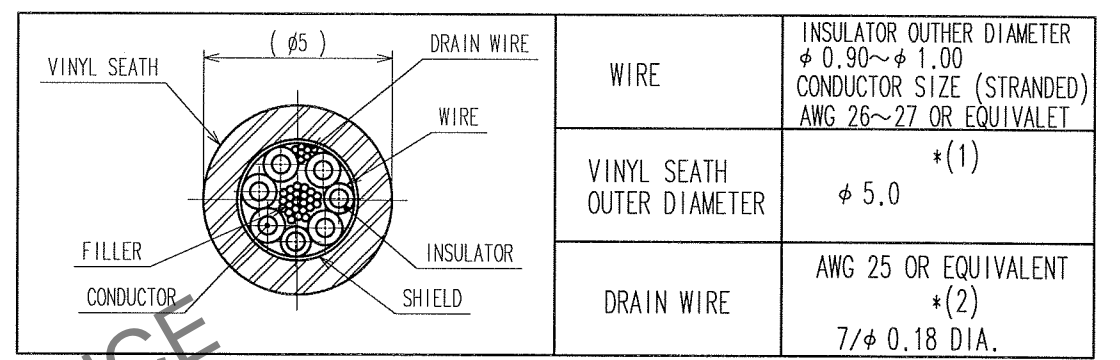


Mar.1.2025 Copyright 2025 HIROSE ELECTRIC CO., LTD. All Rights Reserved.
In case of consideration for using Automotive equipment / device which demand high reliability, kindly contact our sales window correspondents.

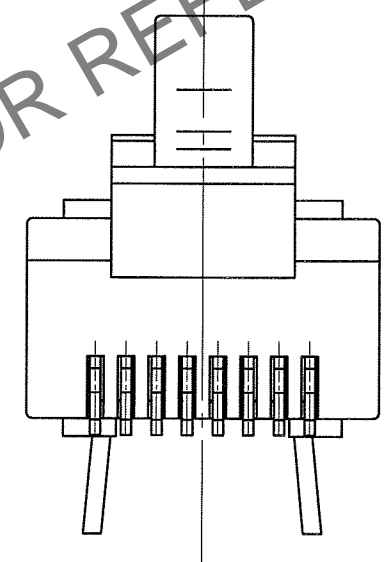


| COUNT | DESCRIPTION OF REVISIONS | BY | CHKD | DATE | COUNT | DESCRIPTION OF REVISIONS | BY | CHKD | DATE |
|-------|--------------------------|----|------|------|-------|--------------------------|----|------|------|
| △ | | | | .. | △ | | | | .. |
| △ | | | | .. | △ | | | | .. |
| △ | | | | .. | △ | | | | .. |

NOTES 1 APPLICABLE CABLE



*(1) CABLE ENTRY IS 5.6 MIN.
*(2) CONSTRUCTION IS FOR REFERENCE.



HRS DRAWING FOR REFERENCE

| | | | | | |
|-------------------------------|-----------------|------------------------------|--------------------------------------|---------------------------------|----------------------------------|
| 2 | PHOSPHOR BRONZE | GOLD PLATING | | | |
| 1 | POLYCARBONATE | TRANSPARENCY | 3 | BRASS | TIN REFLOW PLATING |
| NO. | MATERIAL | FINISH, REMARKS | NO. | MATERIAL | FINISH, REMARKS |
| CODE NO. (OLD) CL | | DRAWN G. Sato 05.10.04 | DESIGNED T. Taniguchi 05.10.04 | CHECKED Y. Enami 05.10.07 | APPROVED H. Miura 05.10.13 |
| DRAWING NO. EDC3-120679-03 | | PART NO. TM11AP-88P(61) | | | |
| SCALE 4 : 1 | | CODE NO. CL222-2780-6-61 | | 1 / 1 | |
| UNITS mm | | HRS HIROSE ELECTRIC CO., LTD | | | |

| |
|----|
| TO |
| Q1 |
| |
| |