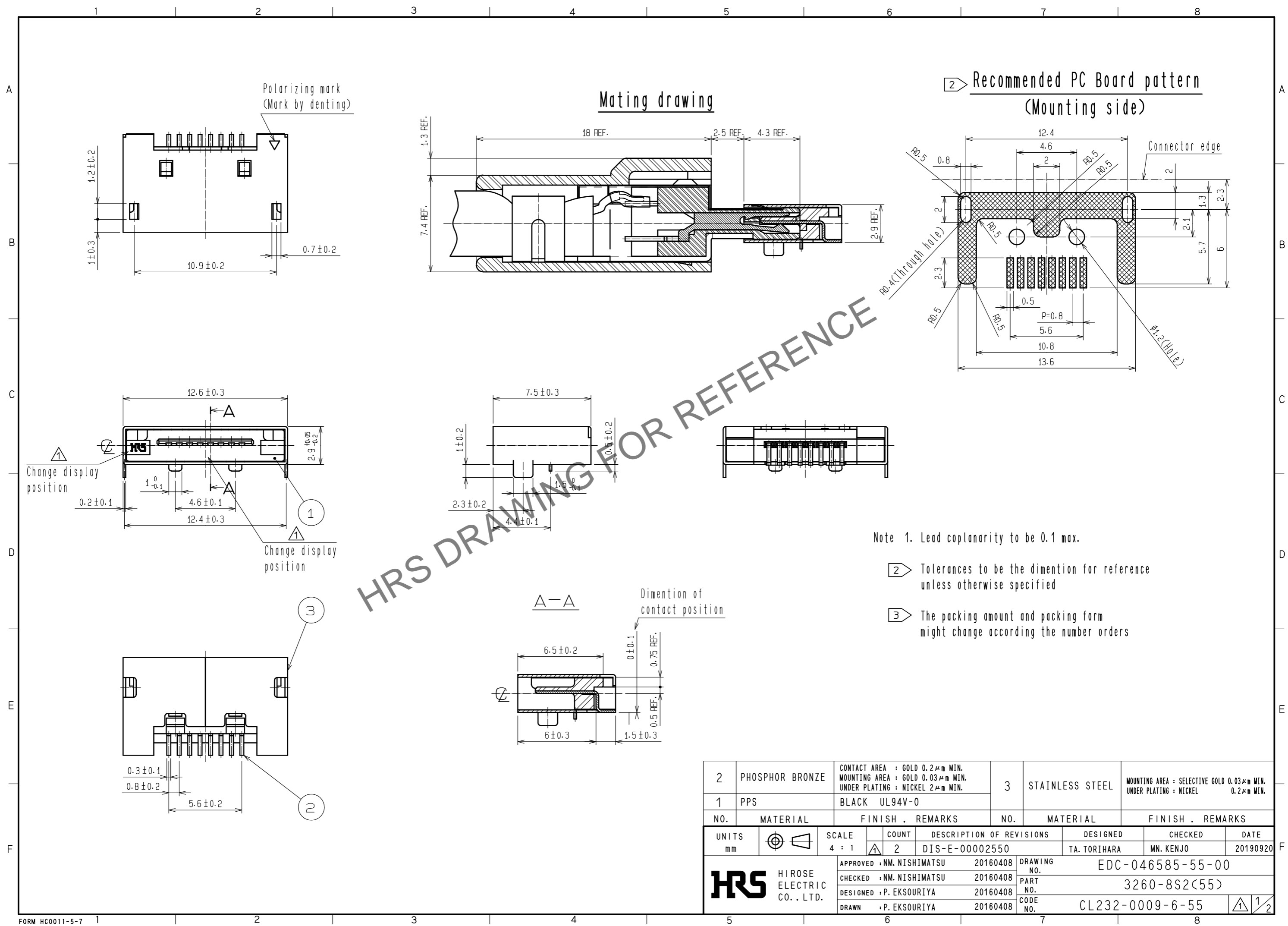


Feb.1.2025 Copyright 2025 HIROSE ELECTRIC CO., LTD. All Rights Reserved.  
 In case of consideration for using Automotive equipment / device which demand high reliability, kindly contact our sales window correspondents.

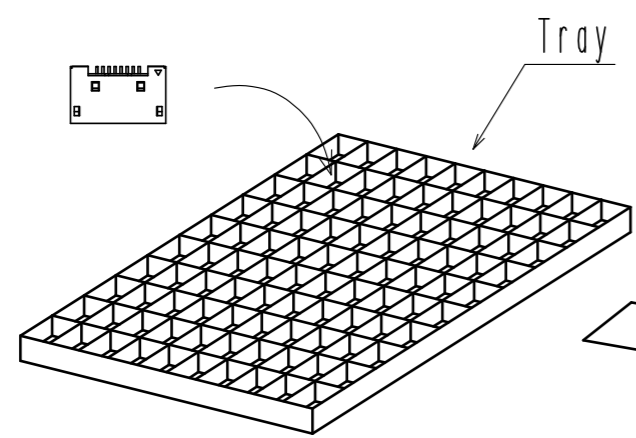


2	PHOSPHOR BRONZE	CONTACT AREA : GOLD 0.2 $\mu$ m MIN. MOUNTING AREA : GOLD 0.03 $\mu$ m MIN. UNDER PLATING : NICKEL 2 $\mu$ m MIN.	3	STAINLESS STEEL	MOUNTING AREA : SELECTIVE GOLD 0.03 $\mu$ m MIN. UNDER PLATING : NICKEL 0.2 $\mu$ m MIN.		
1	PPS	BLACK UL94V-0					
NO.	MATERIAL	FINISH . REMARKS	NO.	MATERIAL	FINISH . REMARKS		
UNITS	mm	SCALE	COUNT	DESCRIPTION OF REVISIONS	DESIGNED	CHECKED	DATE
		4 : 1	2	DIS-E-00002550	TA. TORIHARA	MN. KENJO	20190920
APPROVED : NM. NISHIMATSU 20160408				DRAWING NO. EDC-046585-55-00			
CHECKED : NM. NISHIMATSU 20160408				PART NO. 3260-8S2(55)			
DESIGNED : P. EKSOURIYA 20160408				CODE NO. CL232-0009-6-55			
DRAWN : P. EKSOURIYA 20160408							

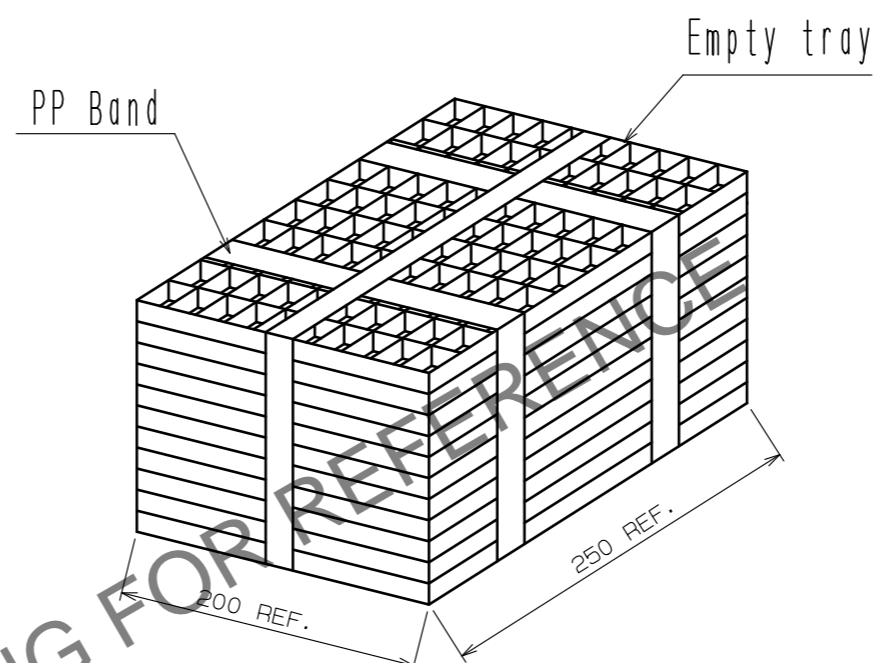
Feb.1.2025 Copyright 2025 HIROSE ELECTRIC CO., LTD. All Rights Reserved.  
In case of consideration for using Automotive equipment / device which demand high reliability, kindly contact our sales window correspondents.

### 3 Packaging

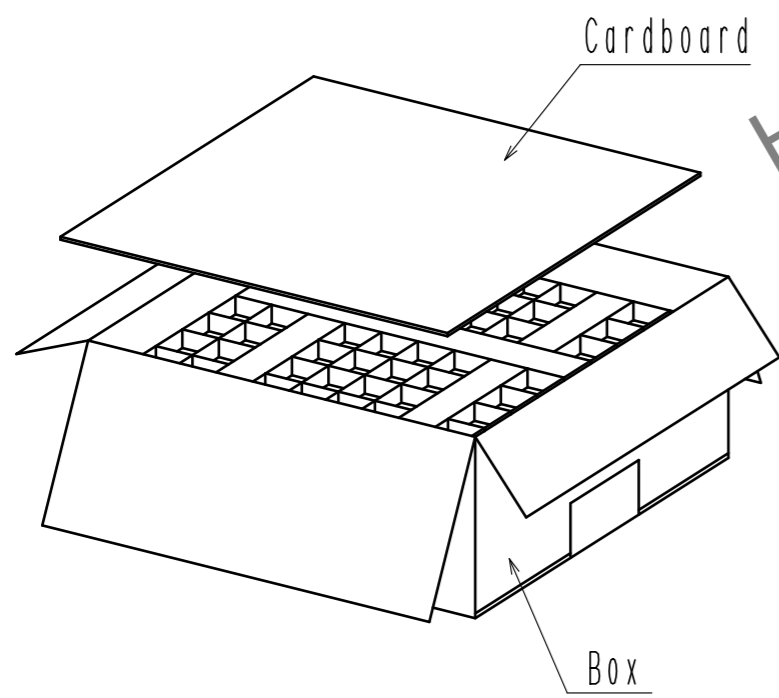
1. The connector is put in a tray in 100 PCS.



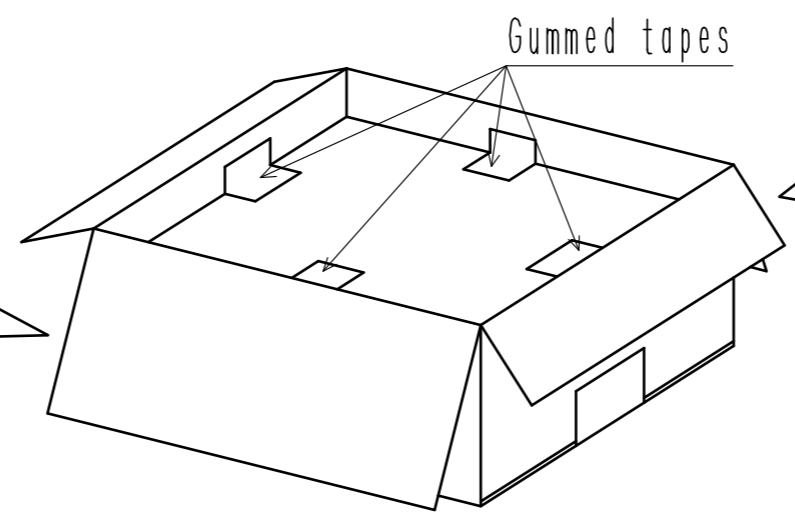
2. 10 trays of the connector are piled up aternately. Connector quality 1000 PCS.



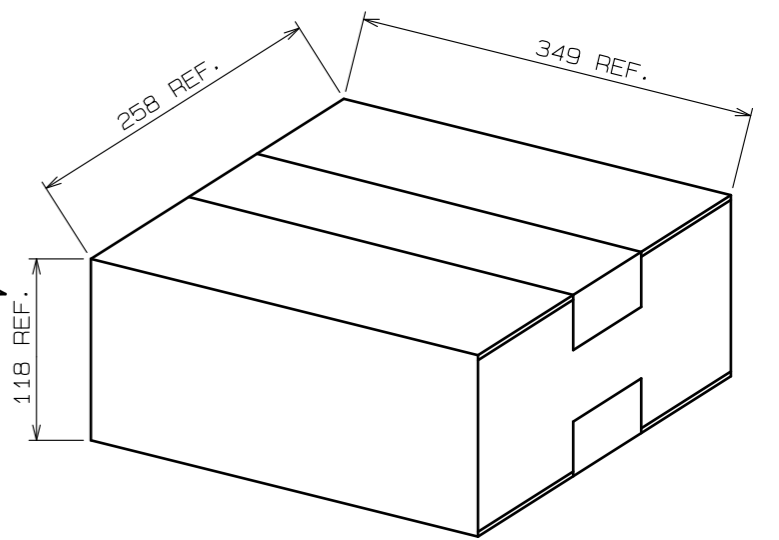
3. Piled up a pack of trays which banded in a box. Cover the top with the cardboard.



4. Fasten up the box and the cardboards with gummed tapes.



5. Close the box and fasten up with gummed tapes.



HRS DRAWING FOR REFERENCE

<b>HRS</b>	DRAWING NO.	EDC-046585-55-00
	PART NO.	3260-8S2(55)
	CODE NO.	CL232-0009-6-55
		2/2