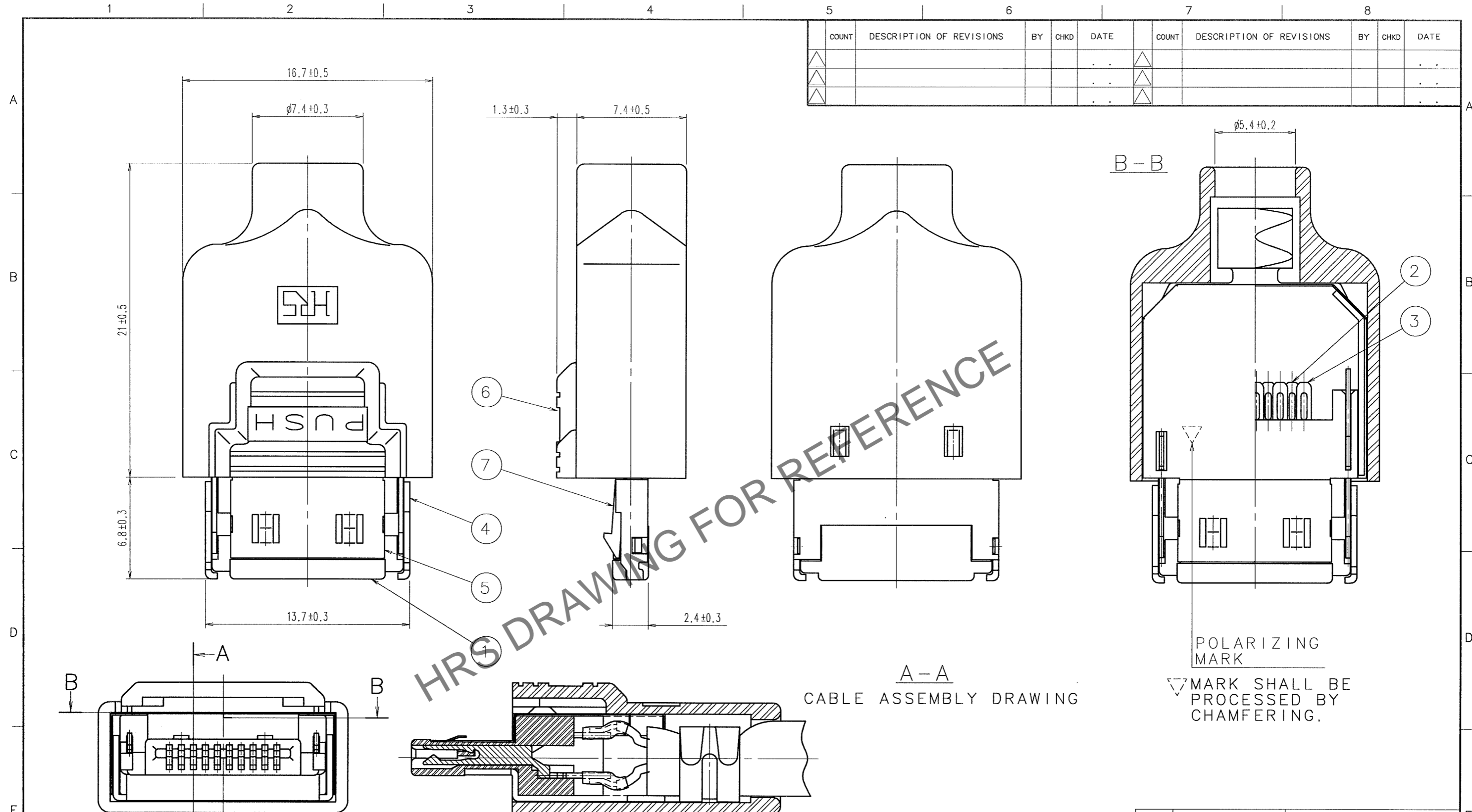


Feb.1.2025 Copyright 2025 HIROSE ELECTRIC CO., LTD. All Rights Reserved.
 In case of consideration for using Automotive equipment / device which demand high reliability, kindly contact our sales window correspondents.

COUNT	DESCRIPTION OF REVISIONS	BY	CHKD	DATE	COUNT	DESCRIPTION OF REVISIONS	BY	CHKD	DATE
△				..	△				..
△				..	△				..
△				..	△				..



HRS DRAWING FOR REFERENCE

A-A
CABLE ASSEMBLY DRAWING

POLARIZING MARK
 MARK SHALL BE PROCESSED BY CHAMFERING.

NOTE 1. THE COMPONENT PART NO. ④ ⑤ ⑥ SHALL BE ATTACHED.

②	PLATING CONTACT AREA	GOLD	0.2 μm min.
	LEAD AREA	GOLD	0.03 μm min.
	UNDER PLATING	NICKEL	2 μm min.

3	COPPER ALLOY		②	7	STAINLESS STEEL	
2	COPPER ALLOY		②	6	PC	(BLACK)
1	PPS	(BLACK) (UL94V-0)		5	PHOSPHOR BRONZE	NICKEL 1 μm min.
				4	BRASS	NICKEL 1 μm min.
NO.	MATERIAL	FINISH, REMARKS		NO.	MATERIAL	FINISH, REMARKS

CODE NO. (OLD)	DRAWN	DESIGNED	CHECKED	APPROVED	RELEASED
	E. Wakana	H. Kikuchi	N. Miyajima	[Signature]	
	'06.09.08	'06.09.08	'06.09.08	'06.09.08	

SCALE	DRAWING NO.	PART NO.
4 : 1	EDC3-047968-02	3240-10P-C(50)
UNITS	HRS HIROSE ELECTRIC CO., LTD	CODE NO.
mm		CL232-0048-8-50

1/1