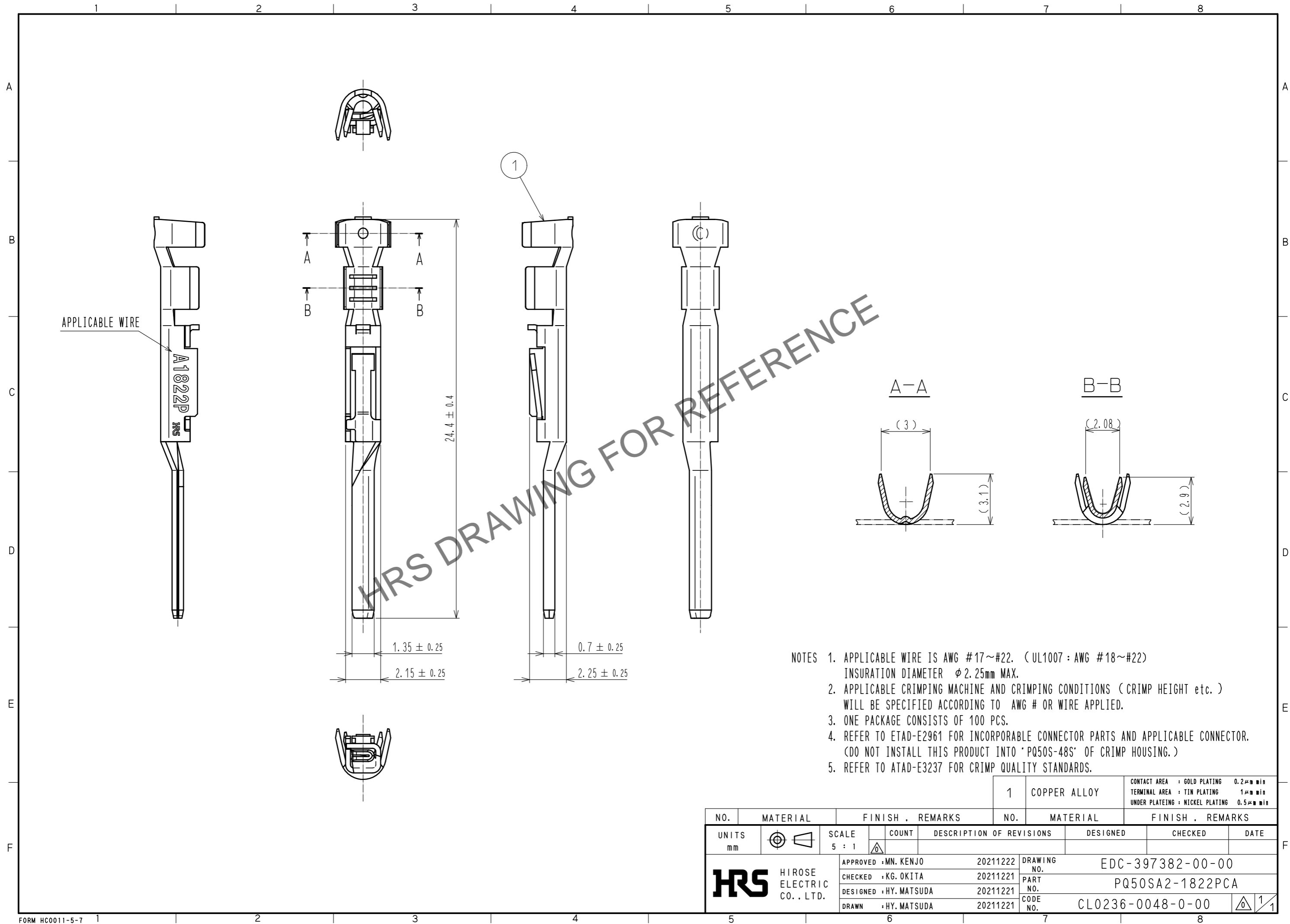
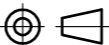





Apr.1.2024 Copyright 2024 HIROSE ELECTRIC CO., LTD. All Rights Reserved.
In case of consideration for using Automotive equipment / device which demand high reliability, kindly contact our sales window correspondents.



- NOTES
1. APPLICABLE WIRE IS AWG #17~#22. (UL1007 : AWG #18~#22)
INSURATION DIAMETER $\phi 2.25\text{mm}$ MAX.
 2. APPLICABLE CRIMPING MACHINE AND CRIMPING CONDITIONS (CRIMP HEIGHT etc.)
WILL BE SPECIFIED ACCORDING TO AWG # OR WIRE APPLIED.
 3. ONE PACKAGE CONSISTS OF 100 PCS.
 4. REFER TO ETAD-E2961 FOR INCORPORABLE CONNECTOR PARTS AND APPLICABLE CONNECTOR.
(DO NOT INSTALL THIS PRODUCT INTO 'PQ50S-48S' OF CRIMP HOUSING.)
 5. REFER TO ATAD-E3237 FOR CRIMP QUALITY STANDARDS.

				1	COPPER ALLOY		CONTACT AREA : GOLD PLATING 0.2μm min TERMINAL AREA : TIN PLATING 1μm min UNDER PLATEING : NICKEL PLATING 0.5μm min					
NO.	MATERIAL		FINISH , REMARKS			NO.	MATERIAL		FINISH , REMARKS			
UNITS mm			SCALE 5 : 1		COUNT	DESCRIPTION OF REVISIONS		DESIGNED		CHECKED		DATE
 HIROSE ELECTRIC CO., LTD.			APPROVED : MN. KENJO			20211222	DRAWING NO. EDC-397382-00-00					
			CHECKED : KG. OKITA			20211221	PART NO. PQ50SA2-1822PCA					
			DESIGNED : HY. MATSUDA			20211221	CODE NO. CL0236-0048-0-00					
			DRAWN : HY. MATSUDA			20211221	 1/1					