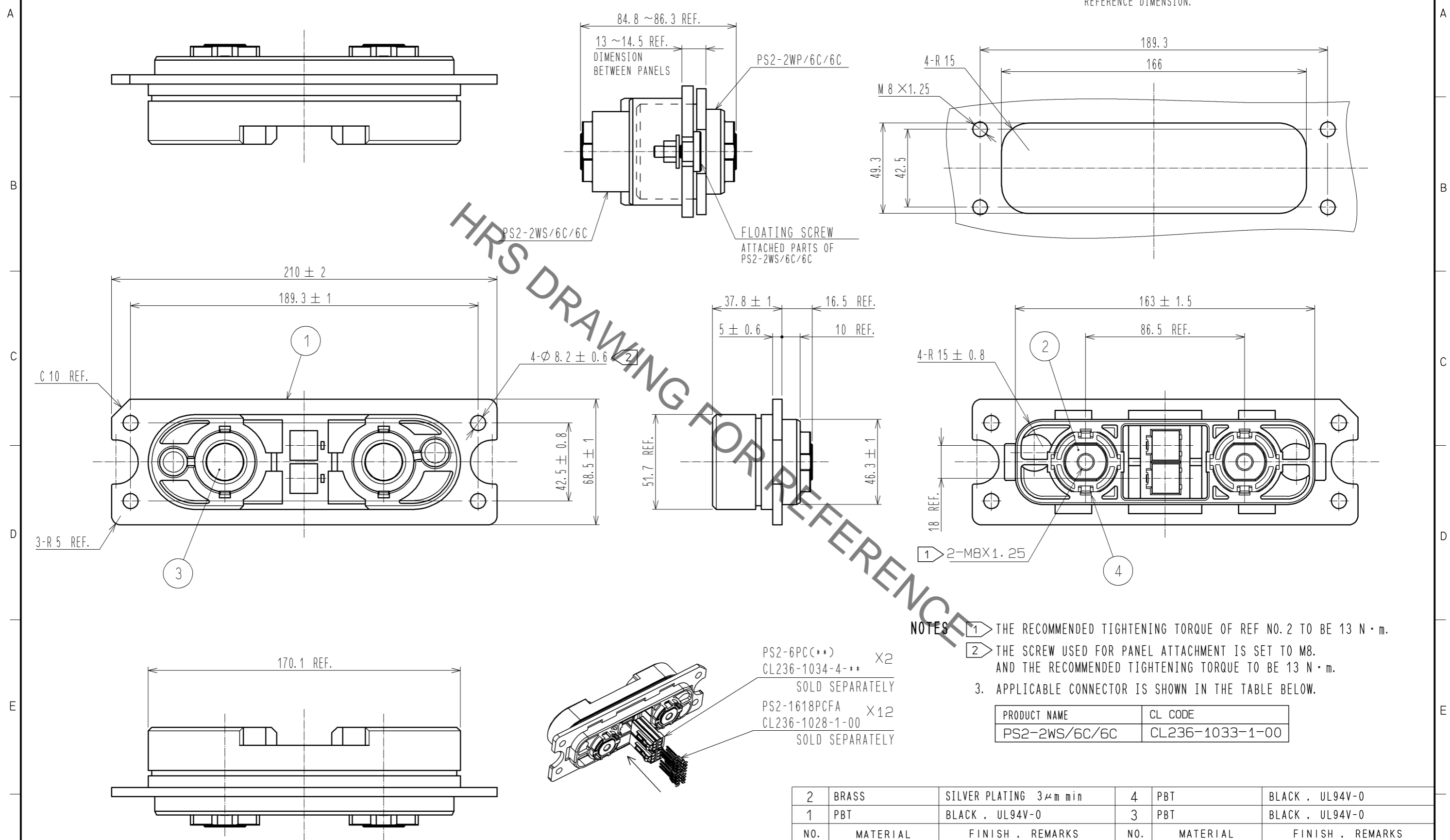


May.1.2021 Copyright 2021 HIROSE ELECTRIC CO., LTD. All Rights Reserved.
In case of consideration for using Automotive equipment / device which demand high reliability, kindly contact our sales window correspondents.

MATED CONDITION

PANEL CUTOUT

TOLERANCES HAS NOT BEEN DESCRIBED
REFERENCE DIMENSION.



HRS DRAWING FOR REFERENCE

- NOTES**
- ① THE RECOMMENDED TIGHTENING TORQUE OF REF NO.2 TO BE 13 N · m.
 - ② THE SCREW USED FOR PANEL ATTACHMENT IS SET TO M8, AND THE RECOMMENDED TIGHTENING TORQUE TO BE 13 N · m.
 - 3. APPLICABLE CONNECTOR IS SHOWN IN THE TABLE BELOW.

| PRODUCT NAME | CL CODE |
|---------------|-----------------|
| PS2-2WS/6C/6C | CL236-1033-1-00 |

| NO. | MATERIAL | FINISH | REMARKS | NO. | MATERIAL | FINISH | REMARKS |
|-----|----------|----------------|---------|-----|----------|--------|---------|
| 2 | BRASS | SILVER PLATING | 3μm min | 4 | PBT | BLACK | UL94V-0 |
| 1 | PBT | BLACK | UL94V-0 | 3 | PBT | BLACK | UL94V-0 |

| UNITS | SCALE | COUNT | DESCRIPTION OF REVISIONS | DESIGNED | CHECKED | DATE |
|-------|-------|-------|----------------------------------|----------|---------|------|
| mm | 1 : 2 | △ | APPROVED : RI. TAKAYASU 11.12.08 | | | |
| | | | CHECKED : YH. ENAMI 11.12.07 | | | |
| | | | DESIGNED : KI. NAGANUMA 11.12.07 | | | |
| | | | DRAWN : KI. NAGANUMA 11.12.07 | | | |

| DRAWING NO. | PART NO. | CODE NO. |
|----------------|---------------|-----------------|
| EDC3-127810-01 | PS2-2WP/6C/6C | CL236-1032-9-00 |