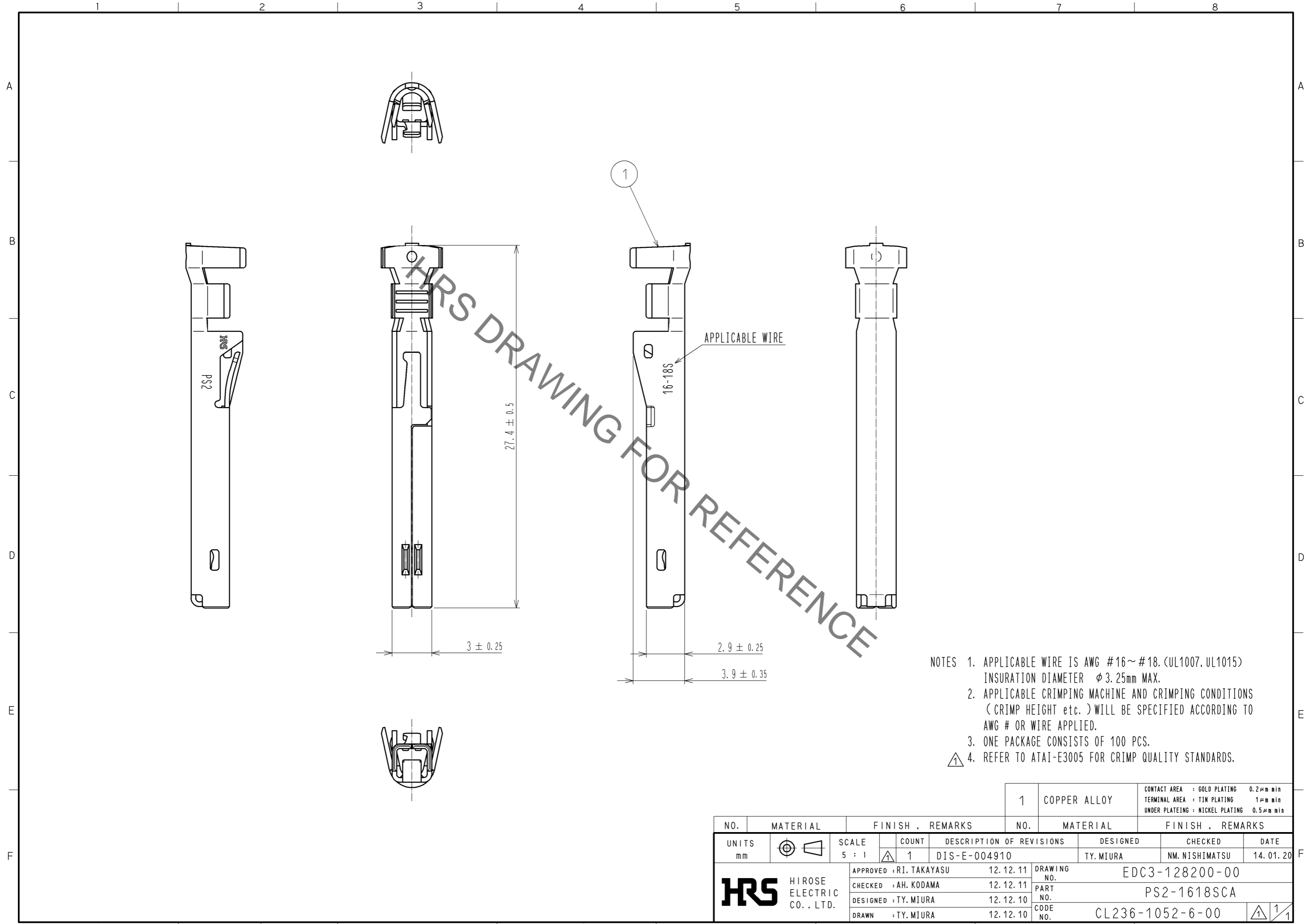


May.1.2021 Copyright 2021 HIROSE ELECTRIC CO., LTD. All Rights Reserved.
In case of consideration for using Automotive equipment / device which demand high reliability, kindly contact our sales window correspondents.



- NOTES
1. APPLICABLE WIRE IS AWG #16~#18. (UL1007, UL1015)
INSURATION DIAMETER ϕ 3.25mm MAX.
 2. APPLICABLE CRIMPING MACHINE AND CRIMPING CONDITIONS
(CRIMP HEIGHT etc.) WILL BE SPECIFIED ACCORDING TO
AWG # OR WIRE APPLIED.
 3. ONE PACKAGE CONSISTS OF 100 PCS.
 - ⚠ 4. REFER TO ATAI-E3005 FOR CRIMP QUALITY STANDARDS.

NO.		MATERIAL		FINISH . REMARKS		NO.		MATERIAL		FINISH . REMARKS	
		1		COPPER ALLOY				CONTACT AREA : GOLD PLATING 0.2 μ m min		TERMINAL AREA : TIN PLATING 1 μ m min	
								UNDER PLATING : NICKEL PLATING 0.5 μ m min			
UNITS	mm	SCALE	5 : 1	COUNT	1	DESCRIPTION OF REVISIONS	DESIGNED	CHECKED	DATE		
						DIS-E-004910	TY. MIURA	NM. NISHIMATSU	14. 01. 20		
HRS		HIROSE ELECTRIC CO., LTD.		APPROVED : RI. TAKAYASU 12. 12. 11		DRAWING NO.		EDC3-128200-00			
				CHECKED : AH. KODAMA 12. 12. 11		PART NO.		PS2-1618SCA			
				DESIGNED : TY. MIURA 12. 12. 10		CODE NO.		CL236-1052-6-00			
				DRAWN : TY. MIURA 12. 12. 10				⚠ 1/1			