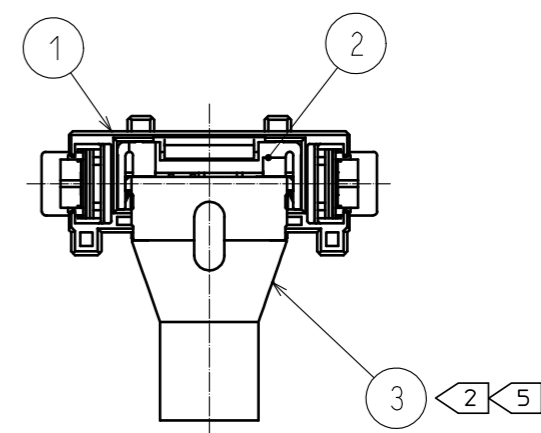
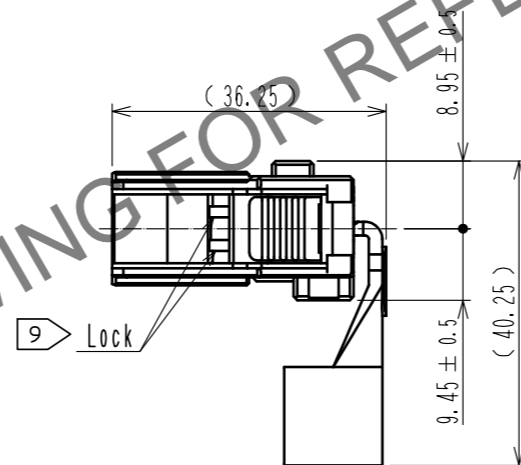
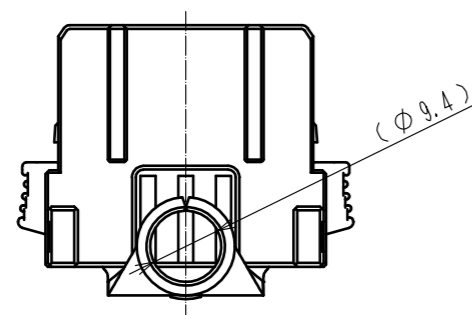
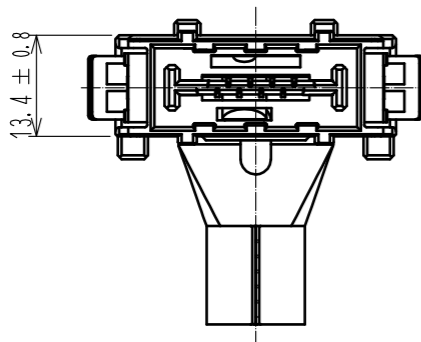
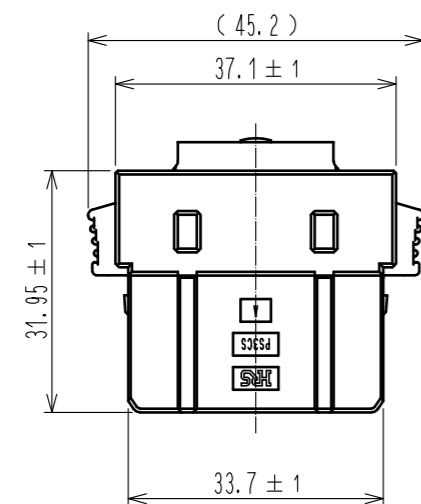
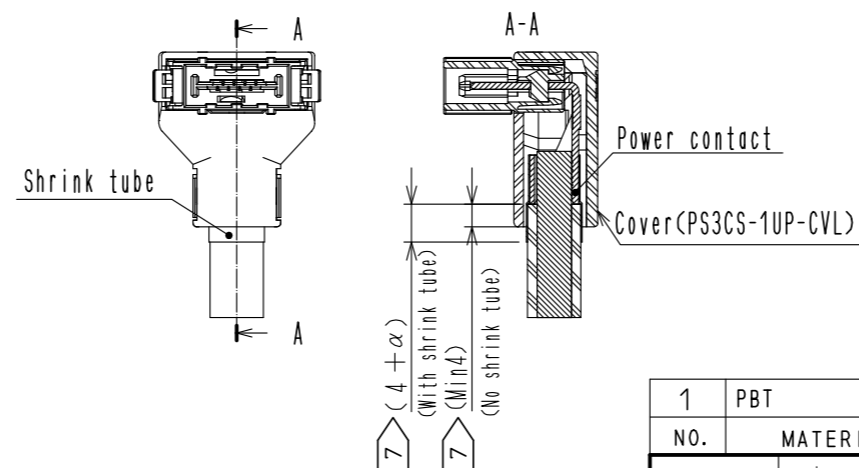


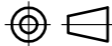



May.1.2024 Copyright 2024 HIROSE ELECTRIC CO., LTD. All Rights Reserved.
In case of consideration for using Automotive equipment / device which demand high reliability, kindly contact our sales window correspondents.



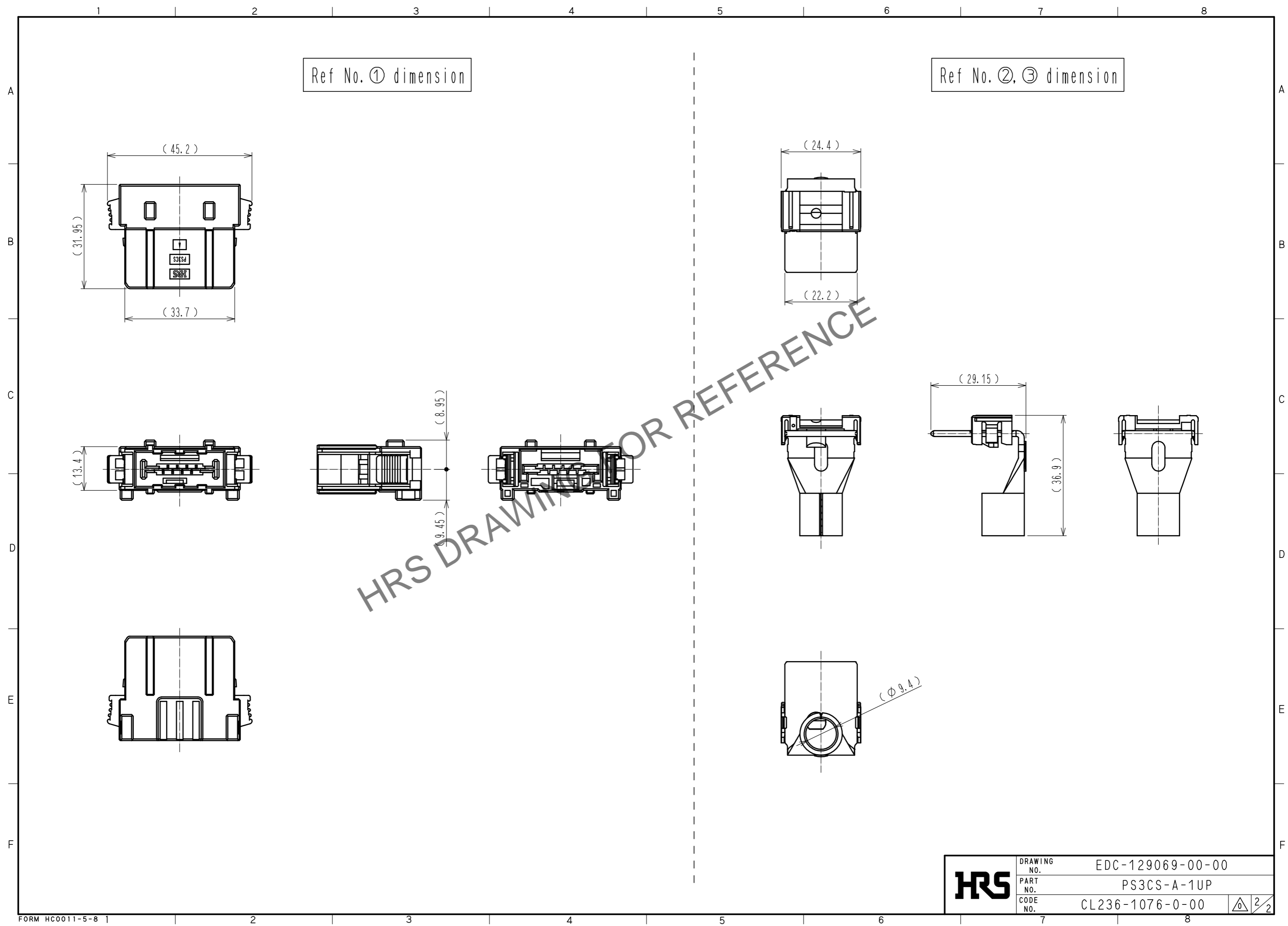
Assembled diagram(1:2)



- Note 1. The mating partner of this product is PS3CS-A-1US(CL236-1074-0).
- 2 Since the power contacts are silver plated, they may react with sulfide in the atmosphere to change the colour to blackish brown.
3. Refer to ETAP-E3160 for the packaging specifications.
4. This product is recommended the cover PS3CS-1UP-CVL(236-1078-0-00) that covers the power supply terminal for the safety.
- 5 If the cover is not be used, please prepare the shrink tube or like covering the power supply terminal. Please refer ETAD-E3145 for assembly procedure.
6. This item is planning to be approved by sasfety standard(UL, C-UL, TUV STANDARD)
- 7 The shortest part of the space distance of this product is between the power contact and the cover. Its minimum dimension is 4 mm.
8. The power contact of thies product is not applicable for hot-swap. It can not be used to interrupt the power.
- 9 Please make sure the lock portion and mating completely with PS3CS-A-1US.

			3		Copper alloy	Silver plating:2μm min.											
1	PBT	Black、			UL94V-0		2	PBT	Black、		UL94V-0						
NO.		MATERIAL		FINISH , REMARKS				NO.		MATERIAL		FINISH , REMARKS					
UNITS mm				SCALE 1 : 1				COUNT	DESCRIPTION OF REVISIONS			DESIGNED		CHECKED		DATE	
 HIROSE ELECTRIC CO., LTD.				APPROVED :NM. NISHIMATSU				17. 04. 19		DRAWING NO.		EDC-129069-00-00					
				CHECKED :NM. NISHIMATSU				17. 04. 19		PART NO.		PS3CS-A-1UP					
				DESIGNED :MO. SHIMOYAMA				17. 04. 19		CODE NO.		CL236-1076-0-00					
				DRAWN :MO. SHIMOYAMA				17. 04. 19				 1/2					

May.1.2024 Copyright 2024 HIROSE ELECTRIC CO., LTD. All Rights Reserved.
In case of consideration for using Automotive equipment / device which demand high reliability, kindly contact our sales window correspondents.



DRAWING NO.	EDC-129069-00-00
PART NO.	PS3CS-A-1UP
CODE NO.	CL236-1076-0-00