

1. Scope


This technical specification sheet applies to the installation procedures of the plug units and the covers.

2. Products

	Product No.	Part No.	Category	Color
Combination (1)	236-1076-0-00	PS3CS-A-1UP	Plug unit	Black
	236-1078-0-00	PS3CS-1UP-CVL	Cover	
Combination (2)	236-1077-0-00	PS3CS-B-1UP	Plug unit	Red
	236-1078-0-01	PS3CS-1UP-CVL(01)	Cover	

3. Procedure

Refer to the following pages.

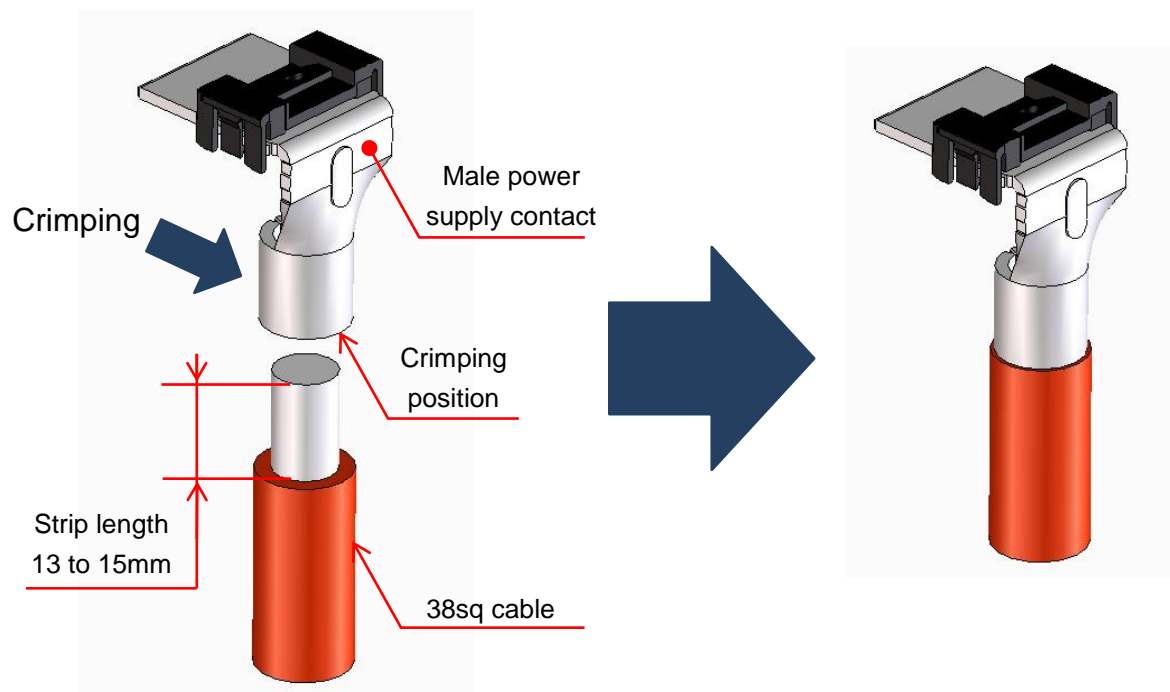
	COUNT	DESCRIPTION OF REVISIONS	DESIGNED	CHECKED	DATE
Δ					
TITLE  PS3CS ASSEMBLY PROCEDURE MANUAL			 HIROSE ELECTRIC CO.,LTD.		
			APPROVED	NM.NISHIMATSU	17.06.09
			CHECKED	NM.NISHIMATSU	17.06.09
			DESIGNED	MO.SHIMOYAMA	17.06.09
			WRITTEN	JY.IGA	17.06.09
TECHNICAL SPECIFICATION			ETAD-E3145-00		Δ 1 / 4

## 【Procedure】

1. Use a tool to crimp the cable to the male power supply contact.

(Standard tool: JIS C 9711)

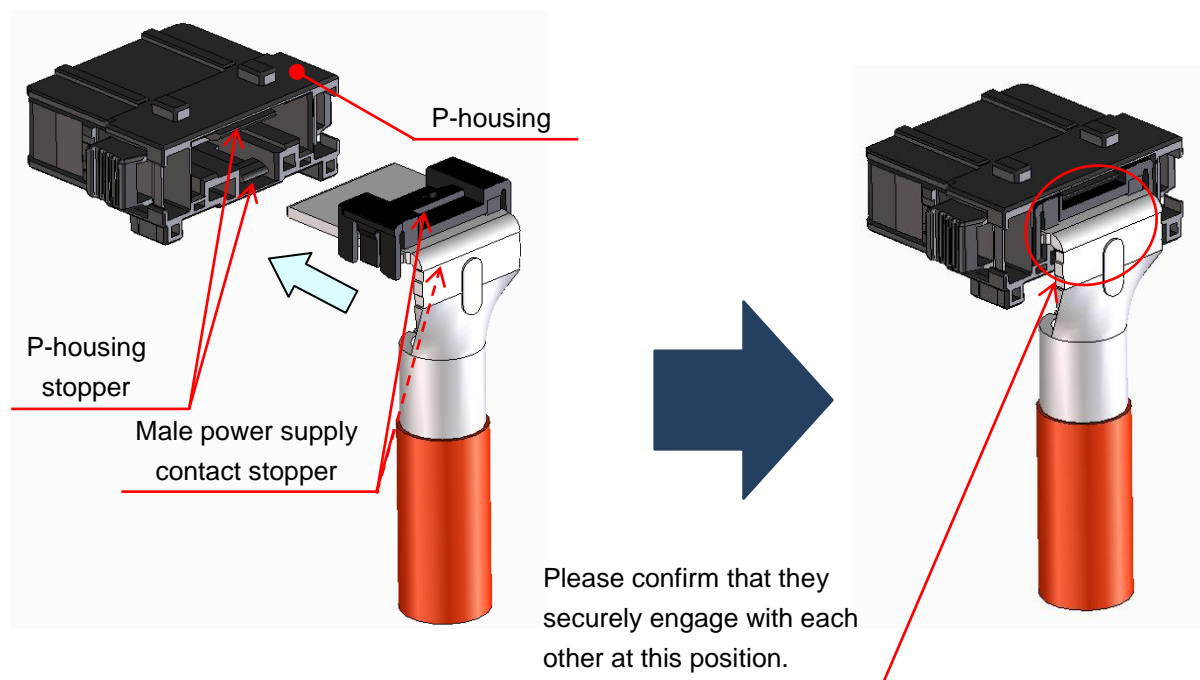
\*The applicable cable shall be 38sq (WL1, WL2, or the equivalent).



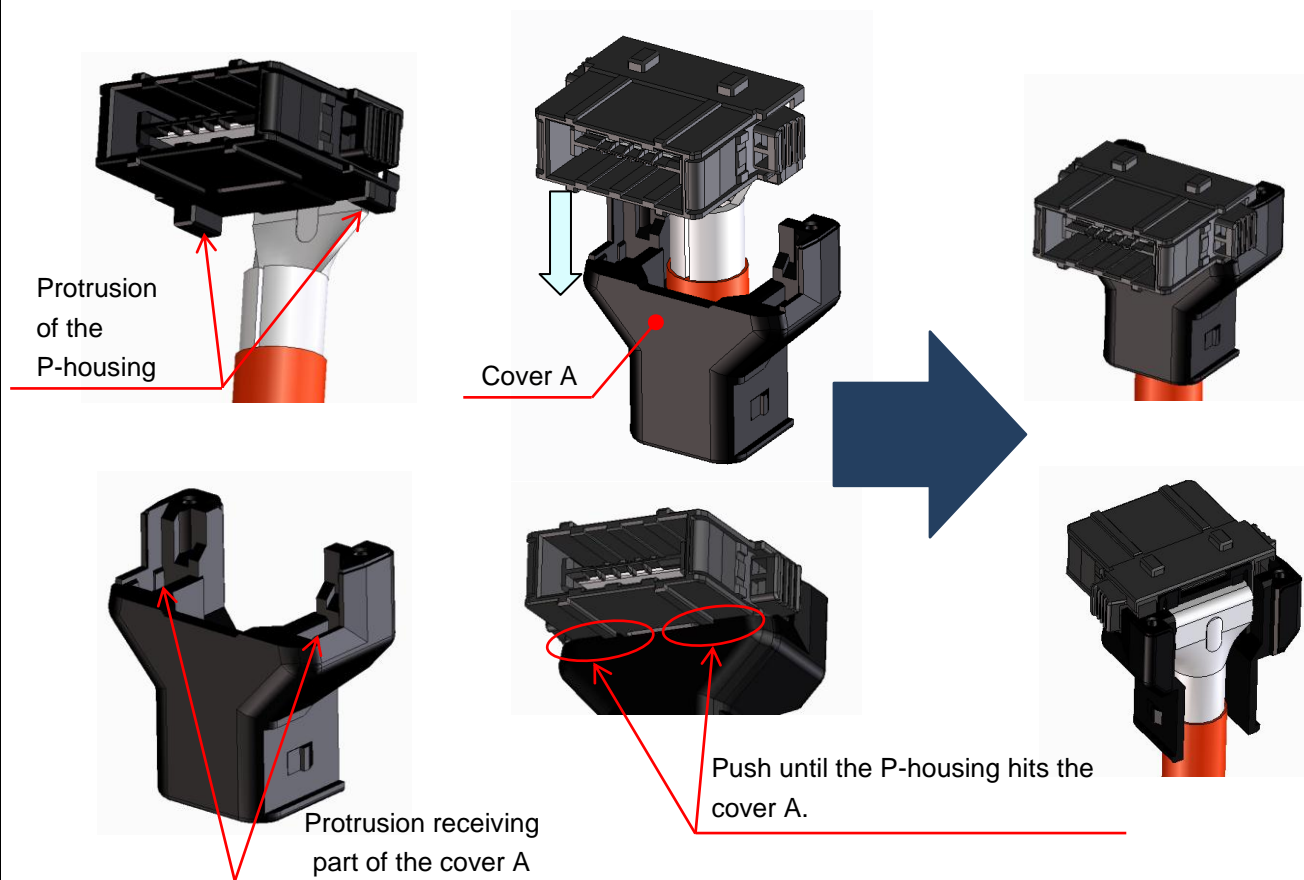
2. Insert the male power supply contact to the P-housing.

Push the male power supply contact to P-housing until latch makes clear lock sound.

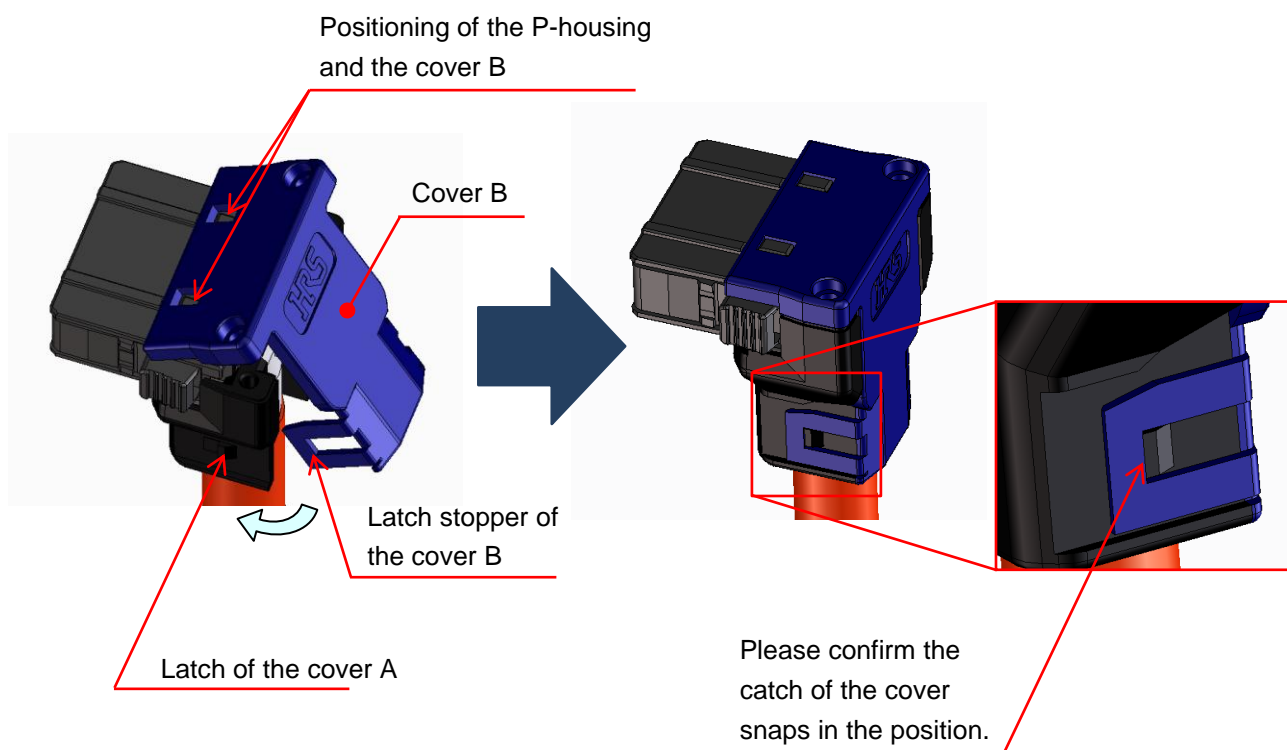
After the complete the assembly, please pull the cable to make sure the secured engagement.



3. Align protrusions of the P-housing and protrusion parts of the cover A, then install cover A to P-housing.



4. Position cover B as shown below, and snap it into cover A, shown below. Please confirm the cover A is locked securely with the cover B.



5. Tighten the cover A and the cover B with the attached tapping screws as shown below.

- Recommended tightening torque: 0.53 to 0.66 N · m

\* The tapping screws are attached with the cover. Just in case, HIROSE can supply the screws. PS3CS-1UP-PS CL236-1081-0-00 or JIS B 1122(1976) pan head tapping screw 3×8 Style 2.

