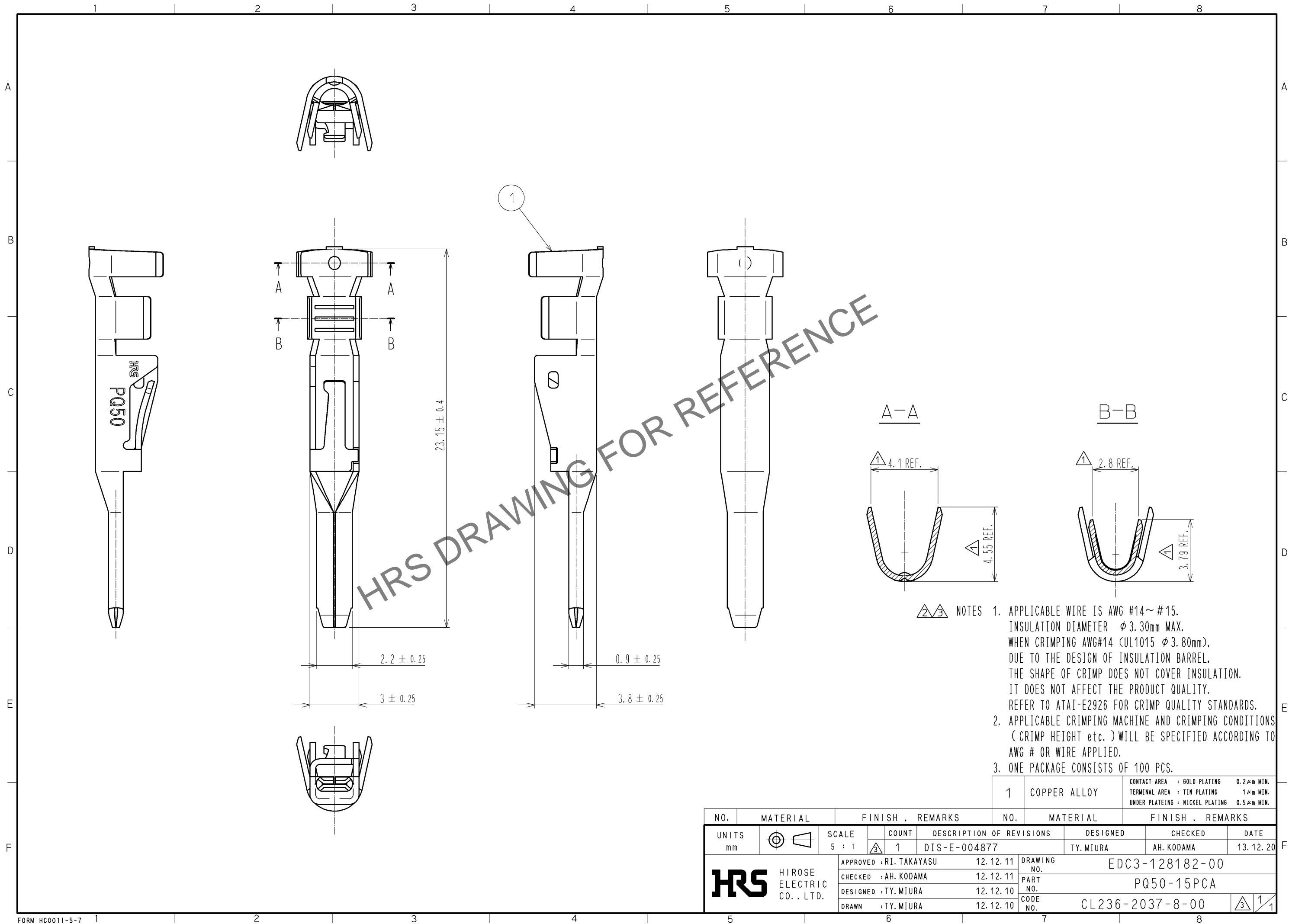
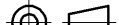





Apr.1.2024 Copyright 2024 HIROSE ELECTRIC CO., LTD. All Rights Reserved.
In case of consideration for using Automotive equipment / device which demand high reliability, kindly contact our sales window correspondents.



- NOTES
1. APPLICABLE WIRE IS AWG #14~#15.
INSULATION DIAMETER $\phi 3.30\text{mm}$ MAX.
WHEN CRIMPING AWG#14 (UL1015 $\phi 3.80\text{mm}$),
DUE TO THE DESIGN OF INSULATION BARREL,
THE SHAPE OF CRIMP DOES NOT COVER INSULATION.
IT DOES NOT AFFECT THE PRODUCT QUALITY.
REFER TO ATAI-E2926 FOR CRIMP QUALITY STANDARDS.
 2. APPLICABLE CRIMPING MACHINE AND CRIMPING CONDITIONS
(CRIMP HEIGHT etc.) WILL BE SPECIFIED ACCORDING TO
AWG # OR WIRE APPLIED.
 3. ONE PACKAGE CONSISTS OF 100 PCS.

					1	COPPER ALLOY		CONTACT AREA : GOLD PLATING 0.2μm MIN. TERMINAL AREA : TIN PLATING 1μm MIN. UNDER PLATING : NICKEL PLATING 0.5μm MIN.		
NO.	MATERIAL		FINISH , REMARKS			NO.	MATERIAL		FINISH , REMARKS	
UNITS mm		SCALE 5 : 1		COUNT 1	DESCRIPTION OF REVISIONS DIS-E-004877		DESIGNED TY. MIURA	CHECKED AH. KODAMA	DATE 13. 12. 20	
 HIROSE ELECTRIC CO. , LTD.			APPROVED : RI. TAKAYASU 12. 12. 11		DRAWING NO. EDC3-128182-00					
			CHECKED : AH. KODAMA 12. 12. 11		PART NO. PQ50-15PCA					
			DESIGNED : TY. MIURA 12. 12. 10		CODE NO. CL236-2037-8-00					
			DRAWN : TY. MIURA 12. 12. 10						1/1	