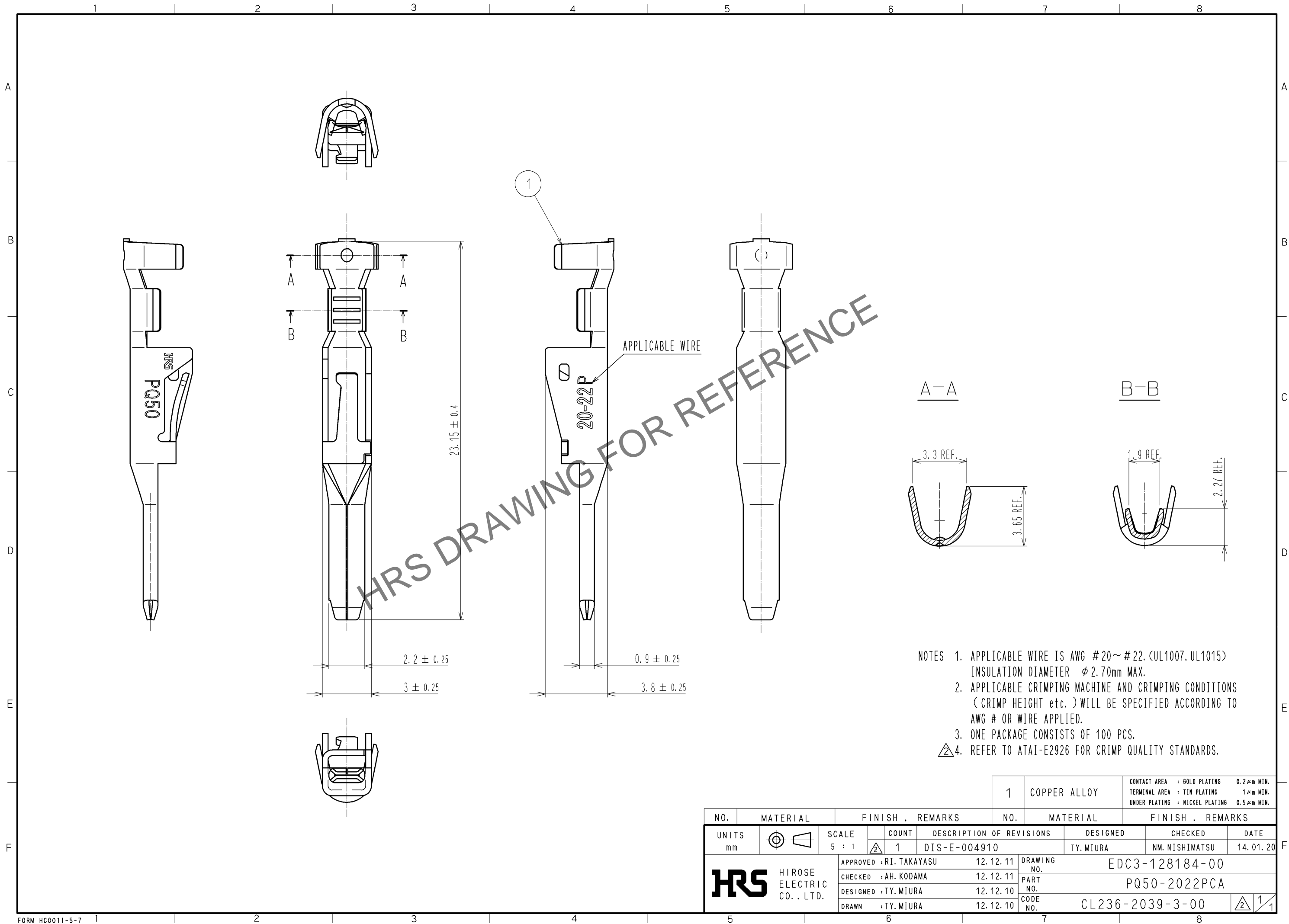
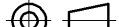





Apr.1.2024 Copyright 2024 HIROSE ELECTRIC CO., LTD. All Rights Reserved.  
In case of consideration for using Automotive equipment / device which demand high reliability, kindly contact our sales window correspondents.



					1		COPPER ALLOY		CONTACT AREA : GOLD PLATING 0.2μm MIN. TERMINAL AREA : TIN PLATING 1μm MIN. UNDER PLATING : NICKEL PLATING 0.5μm MIN.			
NO.	MATERIAL		FINISH , REMARKS				NO.	MATERIAL		FINISH , REMARKS		
UNITS mm		SCALE 5 : 1		COUNT 1	DESCRIPTION OF REVISIONS DIS-E-004910			DESIGNED TY. MIURA		CHECKED NM. NISHIMATSU	DATE 14. 01. 20	
 HIROSE ELECTRIC CO., LTD.			APPROVED : RI. TAKAYASU			12. 12. 11	DRAWING NO. EDC3-128184-00					
			CHECKED : AH. KODAMA			12. 12. 11	PART NO. PQ50-2022PCA					
			DESIGNED : TY. MIURA			12. 12. 10	CODE NO. CL236-2039-3-00					
			DRAWN : TY. MIURA			12. 12. 10		1	1			