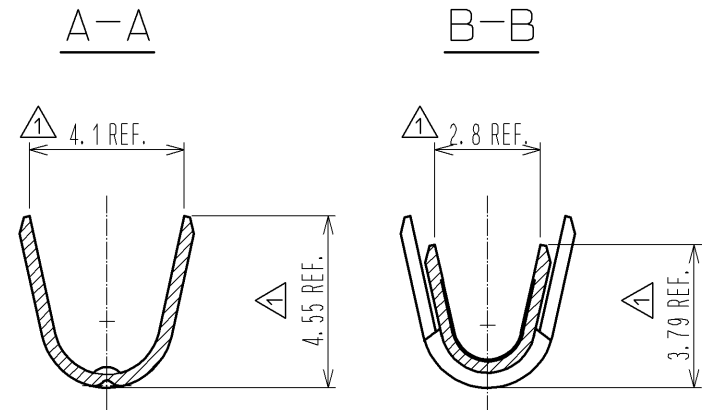
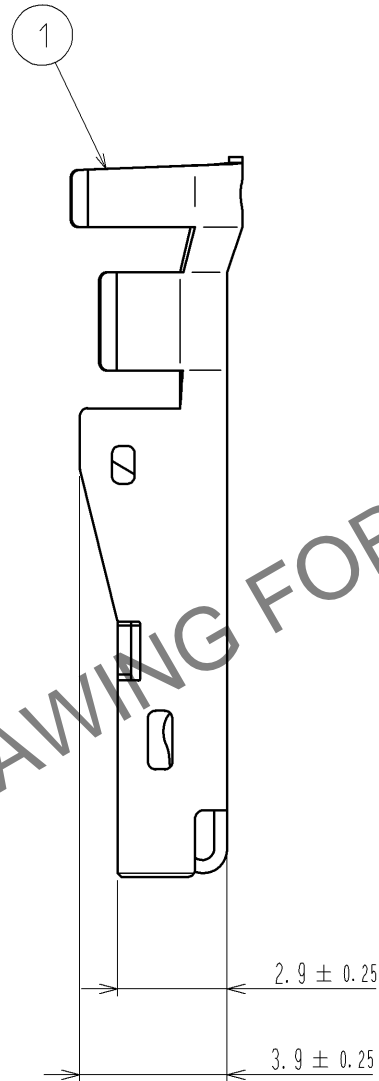
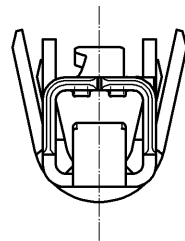
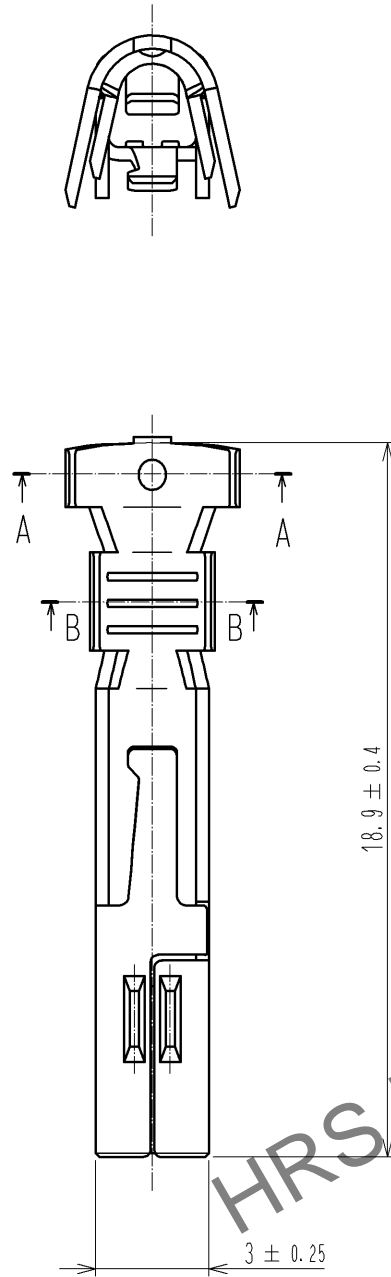
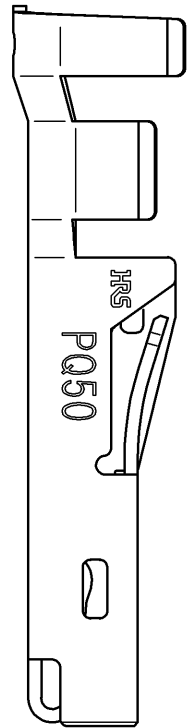


Apr.1.2024 Copyright 2024 HIROSE ELECTRIC CO., LTD. All Rights Reserved.  
In case of consideration for using Automotive equipment / device which demand high reliability, kindly contact our sales window correspondents.



- △/△ NOTES 1. APPLICABLE WIRE IS AWG #14~#15.  
INSULATION DIAMETER  $\phi$  3.30mm MAX.  
WHEN CRIMPING AWG#14 (UL1015  $\phi$  3.80mm),  
DUE TO THE DESIGN OF INSULATION BARREL,  
THE SHAPE OF CRIMP DOES NOT COVER INSULATION.  
IT DOES NOT AFFECT THE PRODUCT QUALITY.  
REFER TO ATAI-E2926 FOR CRIMP QUALITY STANDARDS.  
2. APPLICABLE CRIMPING MACHINE AND CRIMPING CONDITIONS  
(CRIMP HEIGHT etc.) WILL BE SPECIFIED ACCORDING TO  
AWG # OR WIRE APPLIED.  
3. ONE PACKAGE CONSISTS OF 100 PCS.

NO.		MATERIAL		FINISH . REMARKS		NO.		MATERIAL		FINISH . REMARKS	
1		COPPER ALLOY				1		COPPER ALLOY			
CONTACT AREA : GOLD PLATING		0.2 $\mu$ m MIN.				TERMINAL AREA : TIN PLATING		1 $\mu$ m MIN.			
UNDER PLATING : NICKEL PLATING		0.5 $\mu$ m MIN.									
UNITS		mm		SCALE		5 : 1		COUNT		1	
DESCRIPTION OF REVISIONS		DIS-E-004877		DESIGNED		TY. MIURA		CHECKED		AH. KODAMA	
DATE		13. 12. 20									
APPROVED : RI. TAKAYASU		12. 12. 11		DRAWING NO.		EDC3-128190-00					
CHECKED : AH. KODAMA		12. 12. 11		PART NO.		PQ50-15SCA					
DESIGNED : TY. MIURA		12. 12. 10		CODE NO.		CL236-2043-0-00					
DRAWN : TY. MIURA		12. 12. 10									