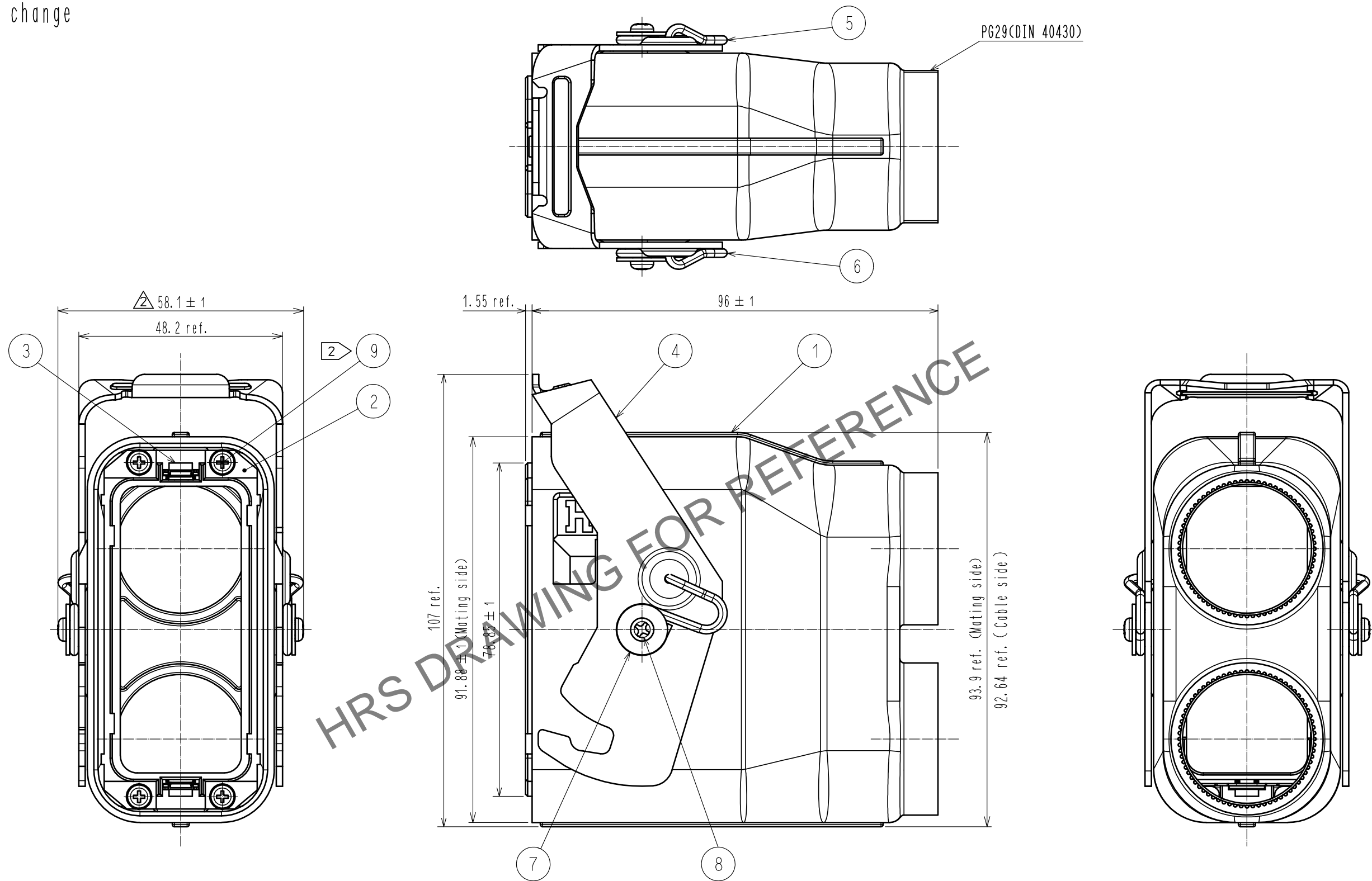


May.1.2024 Copyright 2024 HIROSE ELECTRIC CO., LTD. All Rights Reserved.  
In case of consideration for using Automotive equipment / device which demand high reliability, kindly contact our sales window correspondents.

△ Shape change



- Note
- 1 Mating key type is 'I'.
  - 2 The screw which attaches plug case (ref No. ②, ③ assembly) and cover case (ref No. ①・④・⑤・⑥・⑦・⑧ assembly) is appended products.  
(recommended tightening torque: 0.32~0.63 N・m)
  - 3 Use recommended screw (commercial item) to attach the crimp terminal to this product.  
(recommended screw JIS B 1188 cross recessed pan head machine screw with captive washer M3×0.5×4  
(recommended tightening torque: 0.32~0.63 N・m)
  - 4 Refer to ETAD-E3149 for the conformity connectors with this product.
  - 5 Refer to ETAD-E3151 for the procedure of the cable assembly.
  - 6 This is a die casting product. molten metal flow patterns and small roughness may appear on the surface.  
However there is no problem in the product functions.
  - 7 Sales unit: 20 pcs/box.

4	Stainless steel		9	Steel	Nickel plating
3	Stainless steel	Nickel plating	8	Steel	Nickel plating
2	Aluminum alloy		7	Steel	Nickel plating
1	Aluminum alloy		6	Stainless steel	
			5	Stainless steel	
NO.	MATERIAL	FINISH . REMARKS	NO.	MATERIAL	FINISH . REMARKS
UNITS mm		SCALE 1 : 1	COUNT △ 5	DESCRIPTION OF REVISIONS DIS-E-00004819	DESIGNED HY. MATSUDA
HIROSE ELECTRIC CO., LTD.		APPROVED : NM. NISHIMATSU	20160607	DRAWING NO.	EDC-129122-00-00
		CHECKED : NM. NISHIMATSU	20160607	PART NO.	PQ50WA-2U-PC2
		DESIGNED : TY. MIURA	20160607	CODE NO.	CL0236-2092-0-00
		DRAWN : TY. MIURA	20160607		
					DATE 20210326
					CHECKED TU. TANIGUCHI

May.1.2024 Copyright 2024 HIROSE ELECTRIC CO., LTD. All Rights Reserved.  
In case of consideration for using Automotive equipment / device which demand high reliability, kindly contact our sales window correspondents.

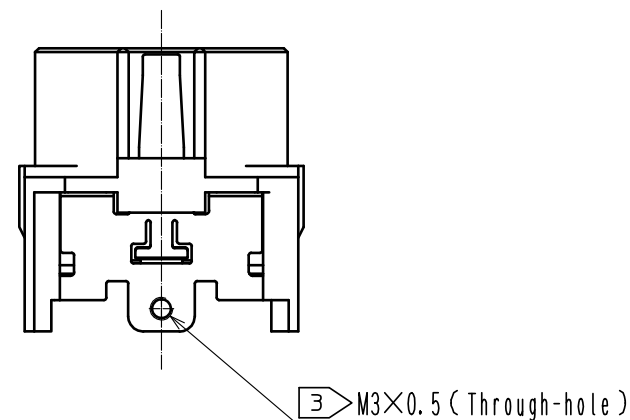
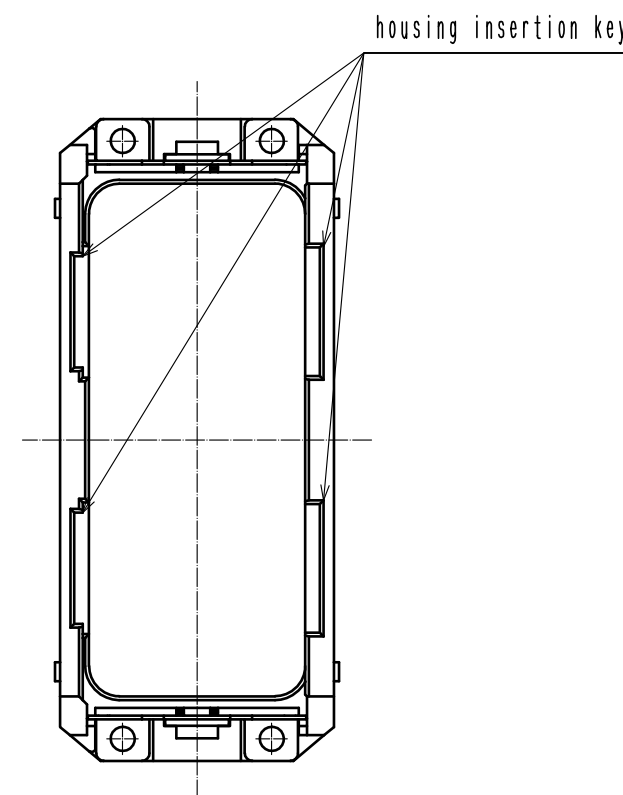
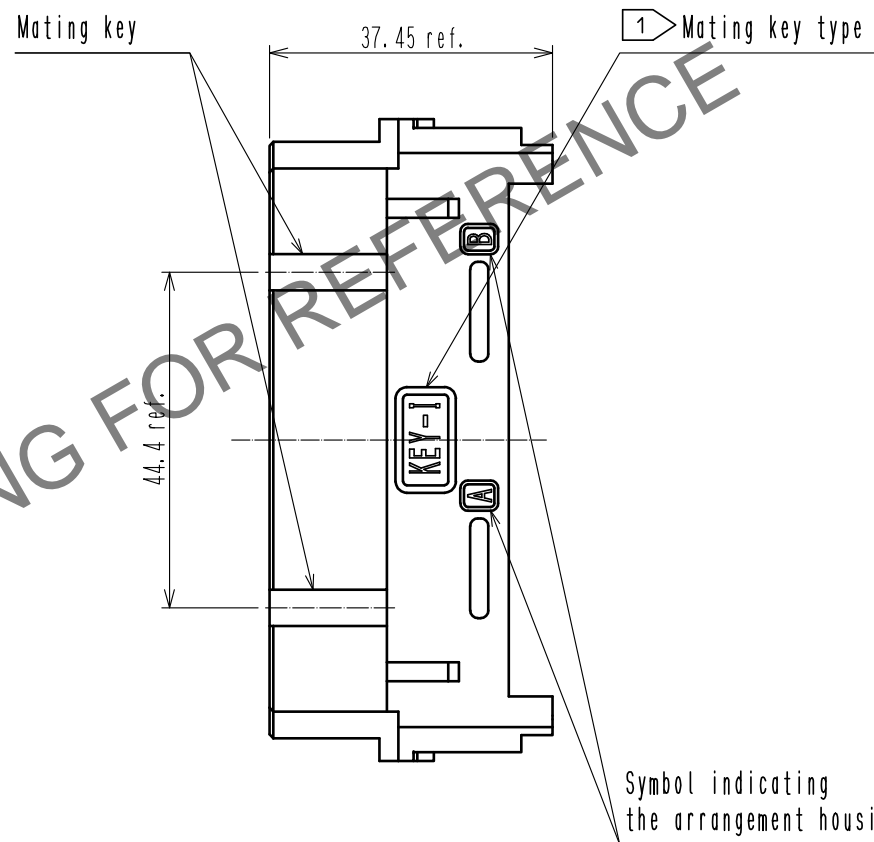
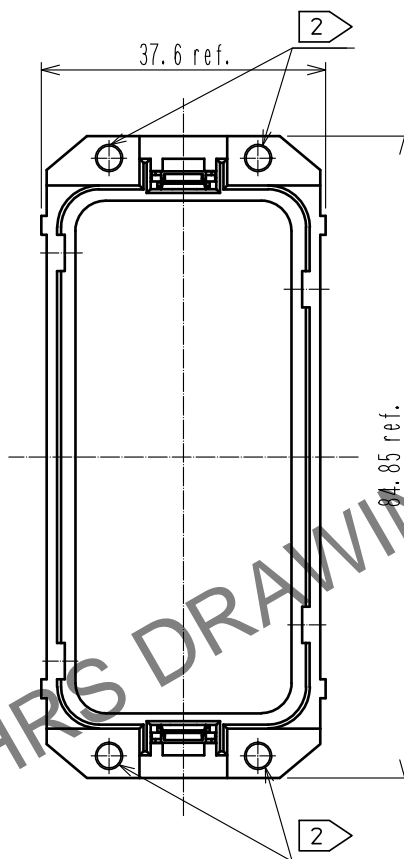
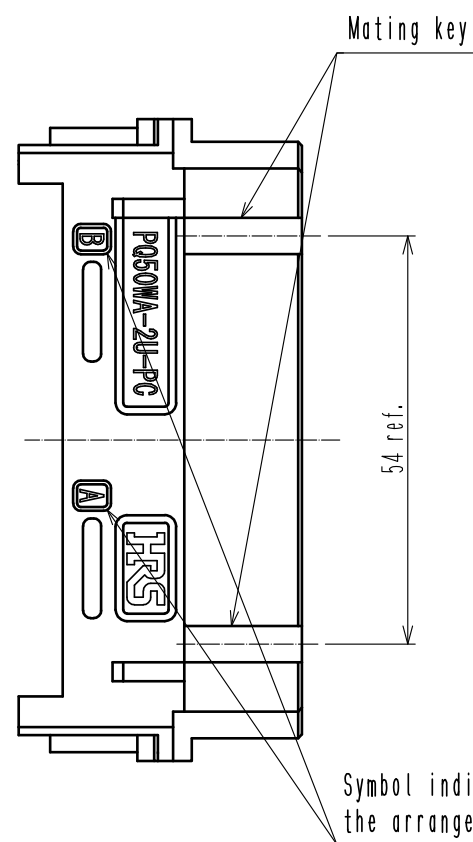
Plug case  
(Ref No. ②・③ assembly)

③ M3×0.5 (Through-hole)

② Screw for attach to the plug case  
(Ref No. ⑨ attachment)



JIS B 1188 : Cross recessed pan head machine screw with  
captive washer M3×0.5×12



**HRS**

DRAWING NO.	EDC-129122-00-00
PART NO.	PQ50WA-2U-PC2
CODE NO.	CL0236-2092-0-00

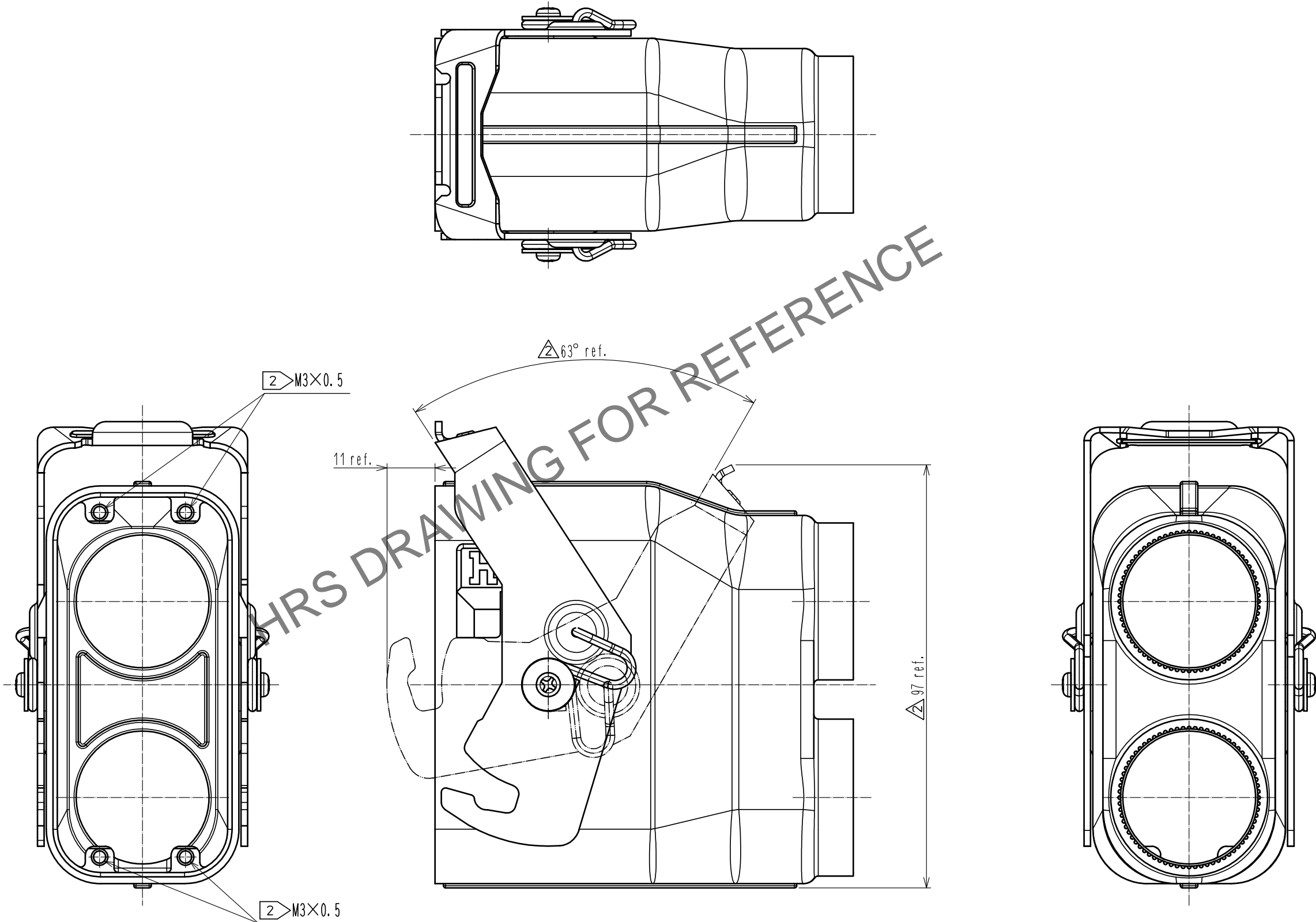
② 2/3

May.1.2024 Copyright 2024 HIROSE ELECTRIC CO., LTD. All Rights Reserved.  
In case of consideration for using Automotive equipment / device which demand high reliability, kindly contact our sales window correspondents.

△ Shape change

Cover case

(Ref No. ①・④・⑤・⑥・⑦・⑧ assembly)



**HRS**

DRAWING NO.	EDC-129122-00-00
PART NO.	PQ50WA-2U-PC2
CODE NO.	CL0236-2092-0-00

2/3