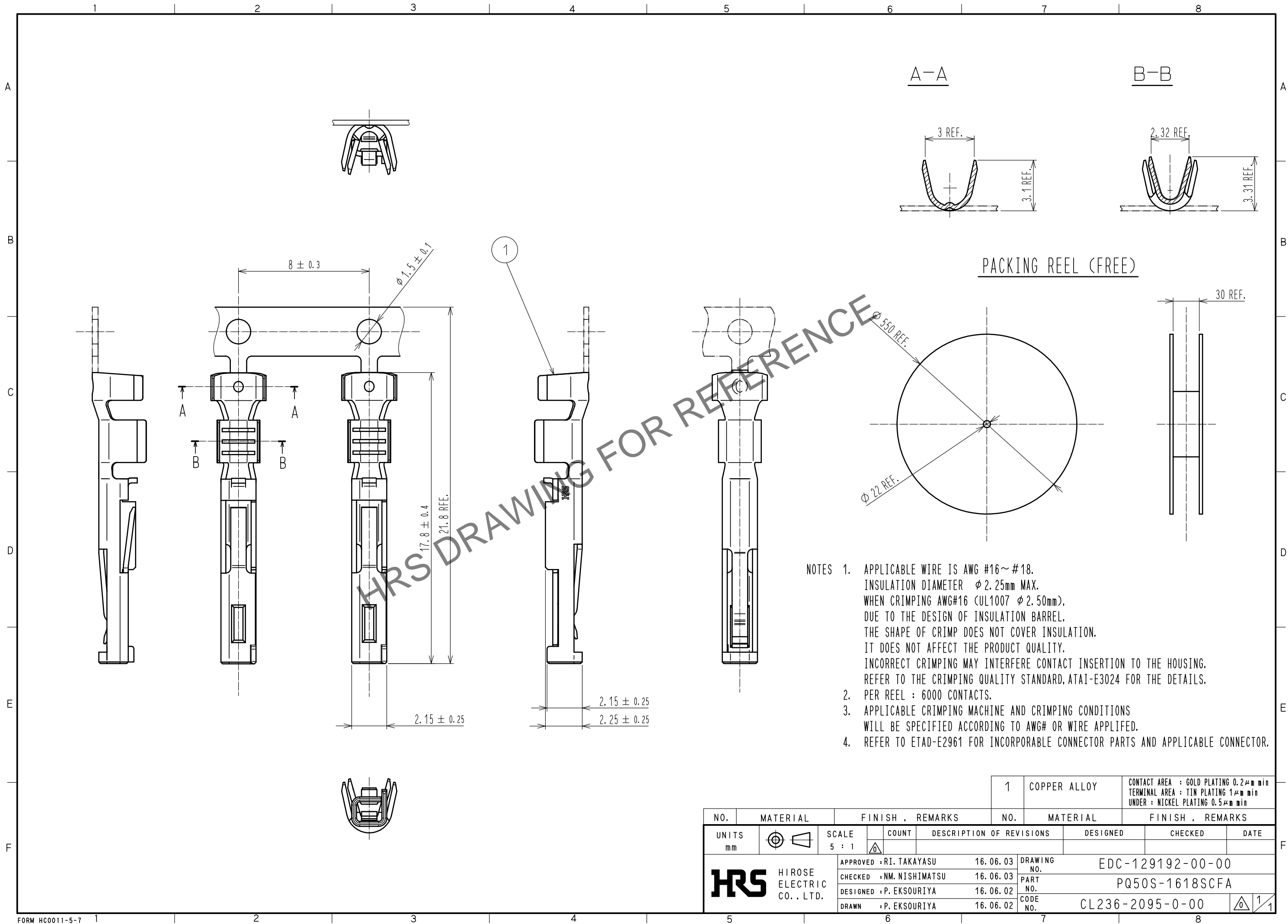



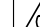


May.1.2024 Copyright 2024 HIROSE ELECTRIC CO., LTD. All Rights Reserved.
In case of consideration for using Automotive equipment / device which demand high reliability, kindly contact our sales window correspondents.



				1	COPPER ALLOY		CONTACT AREA : GOLD PLATING 0.2μm min TERMINAL AREA : TIN PLATING 1μm min UNDER : NICKEL PLATING 0.5μm min			
NO.	MATERIAL		FINISH , REMARKS			NO.	MATERIAL		FINISH , REMARKS	
UNITS mm		SCALE 5 : 1		COUNT	DESCRIPTION OF REVISIONS		DESIGNED	CHECKED	DATE	
 HIROSE ELECTRIC CO., LTD.			APPROVED : RI. TAKAYASU		16.06.03	DRAWING NO. EDC-129192-00-00				
			CHECKED : NM. NISHIMATSU		16.06.03	PART NO. PQ50S-1618SCFA				
			DESIGNED : P. EKSOURIYA		16.06.02	CODE NO. CL236-2095-0-00				
			DRAWN : P. EKSOURIYA		16.06.02	 1/1				